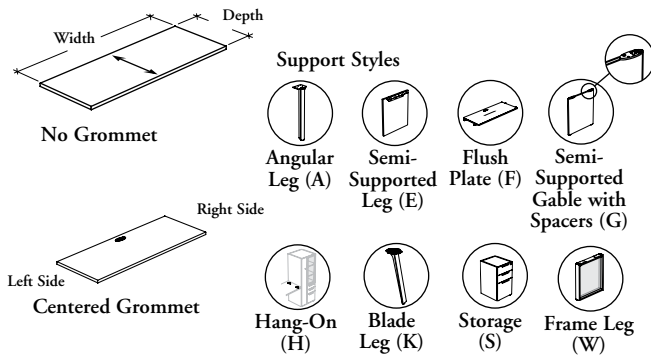


## Xpress

### B \_ R W C

## Cross Grain Rectangular Worksurface



This worksurface may be used as a peninsula, a bridge or as a collaborative worksurface.

#### WHAT'S INCLUDED

1 worksurface, 1 grommet (as specified), 1 cable tray (as specified), 1 reinforcing bar (if applicable) and linking hardware (if applicable).

#### WHAT'S EXCLUDED

Supports and Suspended Modesty Panels.

#### NOTES

When the support style (F, H or S) is specified, the linking plates, hang-on or spacer attachments kit are included with the worksurface.

Cannot be supported by a metal storage

Hang-On Support Style (H) is **not** available with 30" or 36" worksurface depths.

If support style (A, E, G or K) is specified for Left Side, they **cannot** be specified for Right Side.

When Blade Leg Support Style (K) is specified, only 30" and 36" worksurface depths are available.

When Centered Grommet Option (C) is specified, a cable tray is also included.

The 1 9/16" (X) thickness is **not** available in all Foundation Laminate, Edge Trim and Grommet finishes. Refer to the finish page of the Application Guide for details.

Hardware is finished in Black.

#### PRODUCT OPTIONS

Worksurface Thickness	Depth	Width	Grommet Option
D 1"	24, 30, 36	42, 48, 54, 60	C Centered N No Grommet
M 1 3/16"			
X 1 9/16"			

#### SAMPLE ORDER CODE

<b>B</b> <u>X</u> <b>R</b> <b>W</b> <b>C</b>	<b>36</b>	<b>60</b>	<b>C</b>
--	-----------	-----------	----------

#### PRODUCT OPTIONS CONTINUED

Support Left Side (Not Included)	Support Right Side (Not Included)	Worksurface Finish	Edge Trim Style	Edge Trim Finish	Grommet Finish (If Applicable)
<b>A</b> Angular Leg	<b>A</b> Angular Leg	Source Laminate	<b>6</b> Straight Trim	Edge Trim Colors	Source Laminate
<b>E</b> Semi-Supported Leg	<b>E</b> Semi-Supported Leg	Foundation Laminate			
<b>F</b> Flush Plate	<b>F</b> Flush Plate				
<b>G</b> Semi-Supported Gable with Spacers	<b>G</b> Semi-Supported Gable with Spacers				
<b>K</b> Blade Leg	<b>K</b> Blade Leg				
<b>H</b> Hang-On	<b>H</b> Hang-On				
<b>S</b> Storage	<b>S</b> Storage				
<b>W</b> Frame Leg	<b>W</b> Frame Leg				

#### SAMPLE ORDER CODE CONTINUED

<b>F</b>	<b>W</b>	<b>2D</b>	<b>6</b>	<b>4D</b>	<b>3D</b>
----------	----------	-----------	----------	-----------	-----------

See Pricing on the following page.

**B \_ R W C**  
**Cross Grain Rectangular**  
**Worksurface (Continued)**

**DIMENSIONS**  
**INCHES / MM**

**PRICING**

DIMENSIONS		PRICING		
INCHES / MM		1" (D)	1 3/16" (M)	1 9/16" (X)
D	W	Source Laminate	Foundation Laminate	Foundation Laminate
24 / 610	42 / 1067	283	419	509
24 / 610	48 / 1219	320	480	579
24 / 610	54 / 1372	362	542	651
24 / 610	60 / 1524	403	600	723
30 / 762	42 / 1067	356	527	635
30 / 762	48 / 1219	403	600	723
30 / 762	54 / 1372	454	674	814
30 / 762	60 / 1524	501	752	906
36 / 914	42 / 1067	n/a	577	762
36 / 914	48 / 1219	n/a	659	869
36 / 914	54 / 1372	n/a	742	977
36 / 914	60 / 1524	n/a	822	1085

If Support Style H is specified Left or Right, add 44.

If Support Style H is specified Left and Right, add 88.