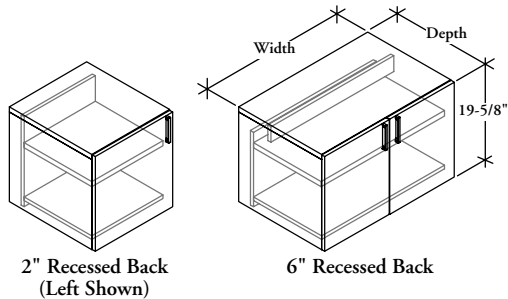


## ZJKD

### Cabinet with Doors – Low



#### WHAT'S INCLUDED

1 cabinet, soft close hinged door(s), 1 height-adjustable shelf, lock and keys (if specified), grommet or data/electrical module (if specified).

#### NOTES

Recessed back is unfinished and inset 2" for wire management or 6" with interior access panel.

6" Recessed Back is only available on widths 30", 36" and 42".

Orientation only required for widths 15" and 18".

Data/Electrical options are not available with 2" recessed back

Round Grommet is only available in Satin Nickel Coordinate and Ebony.

Case height is 19-5/8" and has a finished top.

Horizontal grain direction Veneer Group 4 only.

Flintwood available in Open Pore finish only.

#### PRODUCT OPTIONS

Recessed Back Style	Grain Direction	Depth	Width	Orientation	Veneer Finish	Pull Style	Pull Finish	Lock
2 2" Recessed Back	H Horizontal	20, 24	15, 18, 30, 36, 42	L Left	Flintwood	X Dossier Pull	(7) Platinum	N No Lock
6 6" Recessed Back	V Vertical			R Right	Natural Veneer CWS Custom Wood Stain	R Rectangular	(V) Very White (E) Ebony A Satin Nickel	L Lock

#### SAMPLE ORDER CODE

ZJKD 2	V	20	18	R	DV	R	L	N
--------	---	----	----	---	----	---	---	---

#### PRODUCT OPTIONS CONTINUED

Lock Finish	Left Data/Electrical	Left Grommet Finish (if specified)	Module Finish (if specified)	Right Data/Electrical	Right Grommet Finish (if specified)	Module Finish (if specified)	Back Panel Wire Management
E Ebony	N None	A Satin Nickel	B Black	N None	A Satin Nickel	B Black	N None
C Polished Chrome	R Rectangular Grommet	E Ebony	W White	R Rectangular Grommet	E Ebony	W White	L Left
	C Round Grommet	7 Platinum		C Round Grommet	7 Platinum		R Right
	D Data/Electrical Module	V Very White		D Data/Electrical Module	V Very White		B Left & Right
		I Satin Nickel Coordinate			I Satin Nickel Coordinate		
		X Anthracite			X Anthracite		
		2 Burnished Bronze			2 Burnished Bronze		
		S Sepia Bronze			S Sepia Bronze		
		M Graphite			M Graphite		
		F Titanium Grey			F Titanium Grey		
		1 Gilded Ash			1 Gilded Ash		

#### SAMPLE ORDER CODE CONTINUED

	N			R	A		L
--	---	--	--	---	---	--	---

See pricing on following page.

**Z J K D**  
**Cabinet with Doors – Low**  
**(Continued)**

**DIMENSIONS**  
**INCHES / MM**

D	W
20 / 508	15 / 381
20 / 508	18 / 457
20 / 508	30 / 762
20 / 508	36 / 914
20 / 508	42 / 1067
24 / 610	15 / 381
24 / 610	18 / 457
24 / 610	30 / 762
24 / 610	36 / 914
24 / 610	42 / 1067

**PRICING**

**2" RECESSED BACK (2)**

VENEER		FLINTWOOD	
Vertical Grain	Horizontal Grain	Vertical Grain	Horizontal Grain
2021	2181	1920	2071
2173	2338	2065	2222
2745	2930	2609	2782
2896	3089	2750	2934
3094	3298	2939	3132
2116	2281	2009	2166
2276	2448	2162	2326
2883	3076	2740	2923
3052	3255	2899	3092
3268	3484	3105	3308

**6" RECESSED BACK (6)**

VENEER		FLINTWOOD	
Vertical Grain	Horizontal Grain	Vertical Grain	Horizontal Grain
2745	2930	2609	2782
2896	3089	2750	2934
3094	3298	2939	3132
2883	3076	2740	2923
3052	3255	2899	3092
3268	3484	3105	3308

If Rectangular Grommet, Painted is specified, add 165

If Rectangular Grommet, Satin Nickel (A) is specified, add 204

If Round Grommet, Ebony (E) is specified, add 120

If Round Grommet, Satin Nickel Coordinate (I) is specified, add 176

If Data/Electrical Module (D) is specified, add 699

If Lock (L) is specified, add 85

To order a Custom Color for Dossier please use the code ZCCWS. A one time 897 list charge per color applies.