

Media Unit is a 29" high storage unit that also serves as a television supporting surface.

WHAT'S INCLUDED

1 storage unit on levelers, cable box (if specified), cubby trays (if specified).

NOTES

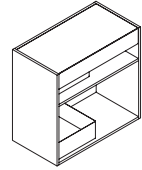
Orientation is applicable to width 45" only and is dictated by the location of the hinged door.

The 45" wide unit includes an extra storage compartment with a hinged door.

If Cubby Trays (Y) are specified, one small tray, one medium plus tray and one tall tray will be included.

Optional Cut Out is placed at the back for efficient cord management.

Optional Cable Box host cables and accommodates a power bar (maximum 11" long).



Z N R M Media Unit

PRODUCT OPTIONS

Height	Width	Cut Out	Cable Box	Cubby Trays
29	30, 45	N No Y Yes	N No Y Yes	N No Y Yes

SAMPLE ORDER CODE

ZNRM 29	45	Y	Y	Y
----------------	-----------	----------	----------	----------

PRODUCT OPTIONS

Orientation	Case Finish	Front Finish	Metal Countertop Finish	Cable Box/ Cubby Tray Finish
L Left R Right	Zones Storage Laminate	Foundation Mica Accent	Foundation Mica Accent	Foundation Mica Accent

SAMPLE ORDER CODE

L	RV	74	74	74
----------	-----------	-----------	-----------	-----------

DIMENSIONS INCHES / MM

H	W
29 / 737	30 / 762
29 / 737	45 / 1143

PRICING

Foundation/Greystone	Mica/Accent
1376	1407
2021	2051

If Mica or Accent Countertop is specified, add 30

If Cubby Trays are specified, add 263

If Cable Box is specified, add 58

If Cut Out is specified, add 29