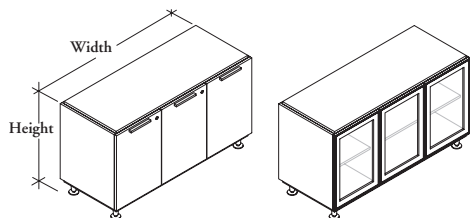


## AFCLA Audience Laminate Credenza with Doors



The *Audience* Laminate Credenza is designed for use in boardroom applications.

### WHAT'S INCLUDED

1 credenza with levelers, grommets (if specified), locks and keys (if specified), waste receptacle (if specified).

### WHAT'S EXCLUDED

Credenza Top (AFCT) must be ordered separately.

### NOTES

48" wide credenzas have three doors, 64" and 72" widths have four doors, 80" & 90" widths have five doors.

Glass doors do not support pull style, lock and waste receptacle options.

Solid doors will be finished to match the case finish.

### PRODUCT OPTIONS

| Door Style     | Width              | Height | Case & Front Finish | Pull Style            | Pull Finish       | Grommet Option                                     | Key Style                                       | Waste Receptacle Option |
|----------------|--------------------|--------|---------------------|-----------------------|-------------------|--|---|-------------------------|
| <b>S</b> Solid | 48, 64, 72, 80, 90 | 29, 36 | Source Laminate     | <b>C</b> Contemporary | <b>7</b> Platinum | <b>N</b> None                                      | <b>N</b> None                                   | <b>1</b> With           |
| <b>G</b> Glass |                    |        |                     | <b>B</b> Rectangular  | <b>E</b> Ebony    | <b>C</b> Center<br><b>L</b> Left<br><b>R</b> Right | <b>K</b> Keyed Alike<br><b>R</b> Keyed Randomly | <b>2</b> Without        |

### SAMPLE ORDER CODE

|                |           |           |           |          |          |          |          |          |
|----------------|-----------|-----------|-----------|----------|----------|----------|----------|----------|
| <b>AFCLA S</b> | <b>64</b> | <b>29</b> | <b>XM</b> | <b>B</b> | <b>7</b> | <b>N</b> | <b>R</b> | <b>1</b> |
|----------------|-----------|-----------|-----------|----------|----------|----------|----------|----------|

### DIMENSIONS INCHES / MM

| W         | H        |
|-----------|----------|
| 48 / 1219 | 29 / 727 |
| 48 / 1219 | 36 / 914 |
| 64 / 1626 | 29 / 727 |
| 64 / 1626 | 36 / 914 |
| 72 / 1829 | 29 / 727 |
| 72 / 1829 | 36 / 914 |
| 80 / 2032 | 29 / 737 |
| 80 / 2032 | 36 / 914 |
| 90 / 2286 | 29 / 737 |
| 90 / 2286 | 36 / 914 |

### PRICING

#### SOLID DOORS (S)

| No Grommet | With Grommet |
|------------|--------------|
| 1261       | 1332         |
| 1322       | 1393         |
| 1477       | 1549         |
| 1550       | 1619         |
| 1585       | 1655         |
| 1625       | 1695         |
| 1716       | 1786         |
| 1801       | 1871         |
| 1858       | 1927         |
| 1943       | 2014         |

#### GLASS DOORS (G)

| No Grommet | With Grommet |
|------------|--------------|
| 2319       | 2391         |
| 2447       | 2517         |
| 2886       | 2959         |
| 3049       | 3120         |
| 3095       | 3167         |
| 3167       | 3237         |
| 3477       | 3548         |
| 3753       | 3823         |
| 3802       | 3872         |
| 3870       | 3939         |

If Contemporary pull style is specified, add 28 per handle

If Lock is specified, add 135

If Waste Receptacle is specified, add 204