

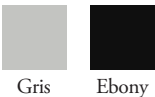
# just-us chair and stool overview

Just-Us is a multi-purpose chair that is easy to use, comfortable and light spirited. Available with a mesh back and upholstered seat, it's the ideal chair for light work, touchdown and meeting use, or for conference spaces. The Just-Us Stool is also a great option for design lab and collaboration spaces.

## Just-Us Chair, Upholstered Seat (NJUU)



### frame finishes



### around mesh finishes



### just-us finishes



### finishes

Frame Finish Palettes are designed to provide a curated and cohesive frame in light or dark finishes that work with both neutral and contrasting fabrics.

Ebony Frame Finish Palette:

- Ebony frame, cylinder, 5 star base, casters and polished aluminum mechanism

Gris Frame Finish Palette:

- Gris plastic frame, cylinder, 5 star base, medium grey casters and polished aluminum mechanism

### statement of line



# just-us chair dimensions & material requirements

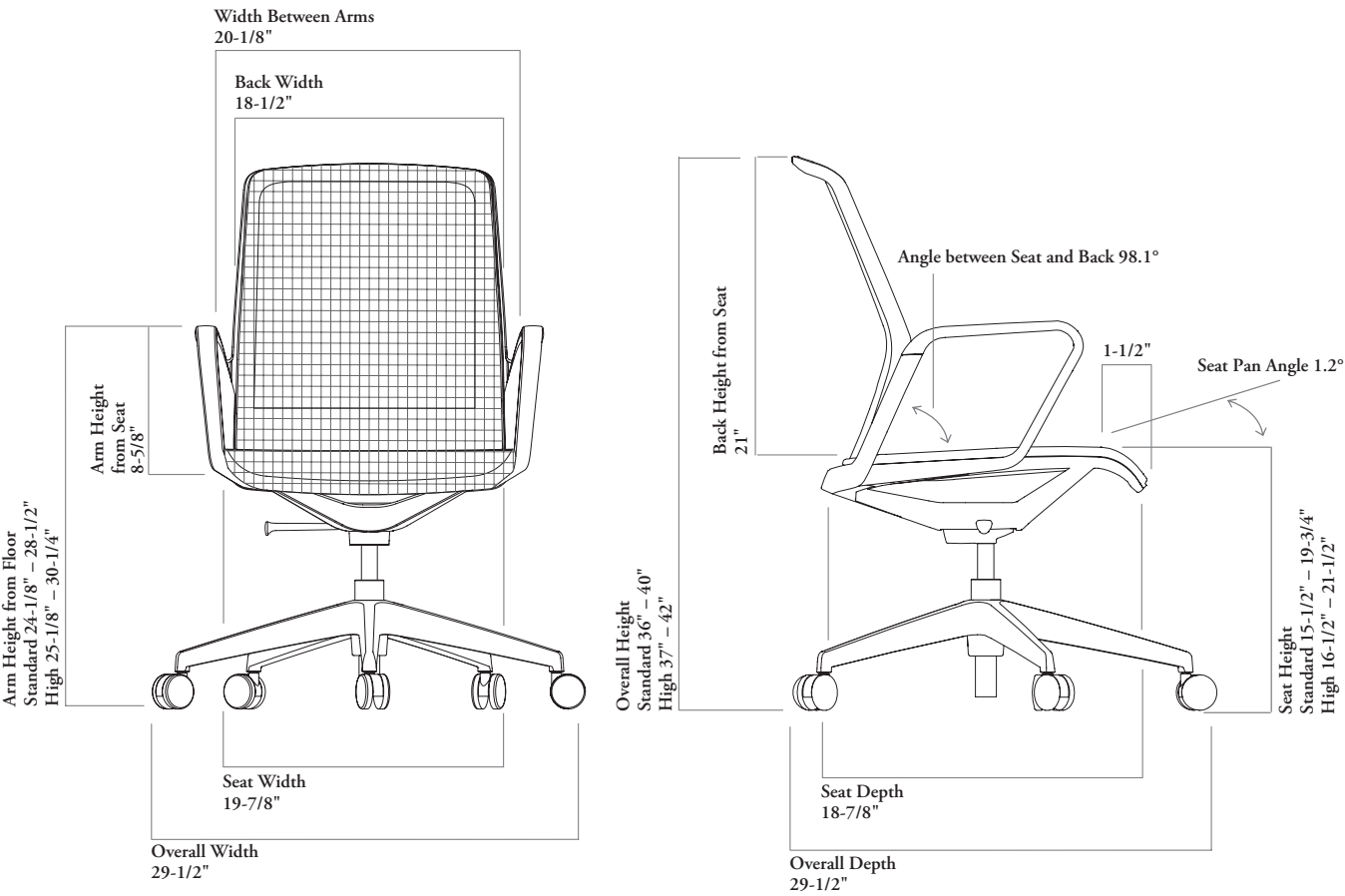
features

- Designed and tested for users up to 300 lbs
- Meets ANSI/BIFMA requirements

weight

Just-Us Chair - Upholstered	35 lbs
-----------------------------	--------

Multi-Use Chair



COM/COL material requirement

The pattern, repeat and directionality of fabric may increase the amount of yardage required.

Leather quantities should always be rounded up to the next hide size, as yields vary from 60-80% and are affected by the quality, size and shape of the hide, and by the location and quantity of blemishes.

UPHOLSTERED		
	COM [yards]	COL [sq. ft]
Seat	0.875	15"

just-us stool dimensions & material requirements

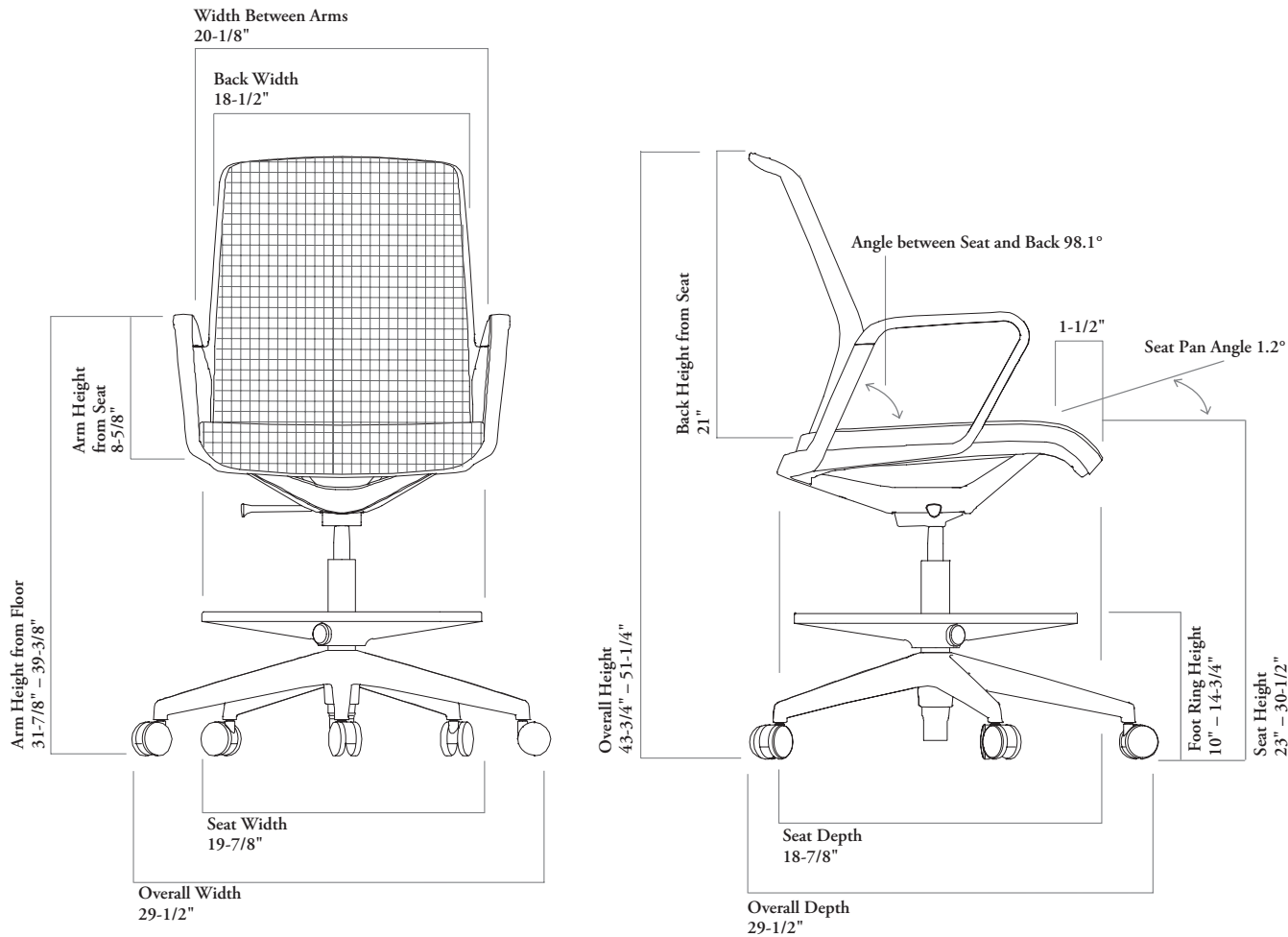
features

- Designed and tested for users up to 300 lbs
- Meets ANSI/BIFMA requirements

weight

Just-Us Stool - Upholstered	40 lbs
-----------------------------	--------

Swivel Stool



COM/COL material requirement

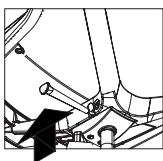
The pattern, repeat and directionality of fabric may increase the amount of yardage required.

Leather quantities should always be rounded up to the next hide size, as yields vary from 60-80% and are affected by the quality, size and shape of the hide, and by the location and quantity of blemishes.

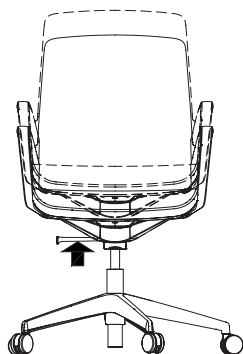
	UPHOLSTERED	
	COM [yards]	COL [sq. ft]
Seat	0.875	15"

## just-us adjustment features & instructions

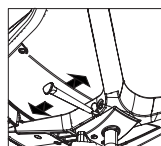
### seat height-adjustment



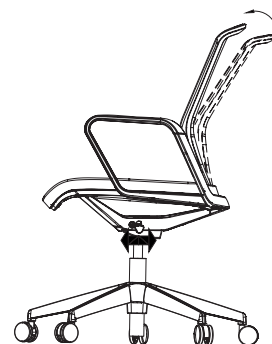
Seat height can be adjusted by lifting the lever underneath the seat on the right side. When the lever is lifted up, the weight of the body will cause the seat to lower. Releasing the lever stops the seat at the desired height. Lifting the lever up with no weight on the seat allows it to rise.



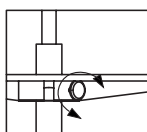
### back tilt lock adjustment



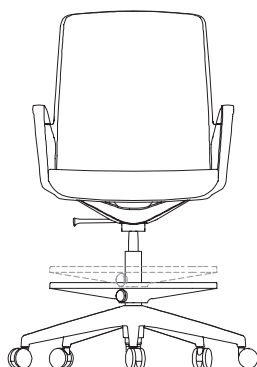
Moving the lever found under the right side of the seat locks and unlocks the recline. Push lever forward to lock chair in upright position. Pull the lever backwards to unlock for tilting action.



### foot ring adjustment (stool)



To raise or lower the stool's foot ring, turn the foot ring's knob counter-clockwise to release the foot ring and adjust the ring until you reach the desired level. Turn the knob clockwise to lock into place.



# multi-use chairs

---

## planning with just-us chair

The Just-Us chair can be used in a variety of applications throughout a workspace.

### private offices

Just Us is available with the Around Chair Mesh so coordinates well with the Around Chair in a private office setting.



### touch-down workstations

The Just-Us chair is suitable for short term use in a touch-down workstation environment where the end user requires a non-dedicated space to work.



### meeting and conference rooms

The swivel-tilt mechanism and seat height is easily adjusted with one lever which makes this chair suitable for short-term use in meeting rooms. Fixed height arms look consistent and professional.



### enclaves

The Just-Us chair is easy-to-use and works well in enclaves and touchdown workstations where the end user needs a space to get some quick work completed.



### workshop space

The Just-Us Stool is easy to use and light-spirited making it a welcoming and casual choice for individual or collaboration work. The Just-Us Stool appeals to organizations and individuals in search of a fresh, more contemporary look and feel, but desiring a stool that exudes professionalism in the work environment.





# multi-use chairs

Xpress

N J U U

Just-Us Chair, Upholstered Seat



## FEATURES

- With fixed-loop arms for a clean look
- Simple to operate with one lever
- Swivel-tilt mechanism locks in upright position
- Standard pneumatic cylinder provides seat height-adjustment of 4"; High pneumatic cylinder adjustment is 5"
- Swivel-tilt mechanism with 11° recline
- To allow coordination with other Teknion Work Chairs, Around or Just-Us mesh is applied on the chair's back
- The cushioned seat is upholstered with LUUM upholstery
- Hard casters are standard and are well suited for soft flooring such as carpeting. Soft casters are available for use on hard flooring, such as wood, concrete or tile

## NOTES

Gris Frame Finish includes Gris plastic frame, cylinder and 5-star base with Grey casters. Ebony Frame Finish includes all Ebony frame, cylinder, base and casters. Mechanism is always Polished Aluminum.

**Xpress** Available through *Teknion's Xpress Program*.

## PRODUCT OPTIONS

Mesh Back		Seat Upholstery Finish	Cylinder Style	Frame Finish	Casters/Glides
<b>Around</b>	<b>Just-Us</b>	Fabric	<b>1</b> Standard	<b>8B</b> Ebony	Hard Casters
<b>A123</b> Banner	<b>J100</b> Black	Leather	<b>2</b> High	<b>9F</b> Gris	<b>A</b> Soft Casters
<b>A124</b> Lapis	<b>J101</b> Charcoal				<b>B</b> Hard Glides
<b>A125</b> Brier	<b>J102</b> Smoke				<b>C</b> Soft Glides
<b>A126</b> Dove	<b>J103</b> Fleece				
<b>A127</b> Black	<b>J104</b> Khaki				
	<b>J105</b> Spice				
	<b>J106</b> Surf				

## SAMPLE ORDER CODE

<b>NJUU A127</b>	<b>E523</b>	<b>1</b>	<b>8B</b>	<b>A</b>
------------------	-------------	----------	-----------	----------

## PRICE

Grade 1	COM/ Grade 2	COL/ Grade 3	Grade 4	Grade 5	Grade 6	Grade 7	Grade 8	Grade 9	Grade 10
1041	1069	1097	1110	1125	1139	1154	1168	1183	1199

Leather LA	Leather LB	Leather LC	Leather LD
1386	1444	1619	1678

If Soft Casters (A) are specified                      add 29  
If Hard Glides (B) are specified                      add 29  
If Soft Glides (C) are specified                      add 45  
If Gris (9F) frame is specified                      add 111

Xpress

NJUD

## Just-Us Swivel Stool, Upholstered Seat



### FEATURES

- With fixed-loop arms for a clean look
- Simple to operate with one lever
- Swivel-tilt mechanism locks in upright position
- Standard pneumatic cylinder provides seat height-adjustment of 8"
- Swivel-tilt mechanism with 11° recline
- To allow coordination with other Teknion Work Chairs, Around or Just-Us mesh is applied on the chair's back
- The cushioned seat is upholstered with LUUM upholstery
- Hard casters are standard and are well suited for soft flooring such as carpeting. Soft casters are available for use on hard flooring, such as wood, concrete or tile

### NOTES

Gris Frame Finish includes Gris plastic frame, cylinder and 5-star base with Grey casters. Ebony Frame Finish includes all Ebony frame, cylinder, base and casters. Mechanism is always Polished Aluminum.

**Xpress** Available through *Teknion's Xpress Program*.

### PRODUCT OPTIONS

Mesh Back		Seat Upholstery Finish	Frame Finish	Casters/Glides
<b>Around</b>	<b>Just-Us</b>	Fabric	<b>8B</b> Ebony	Hard Casters
<b>A123</b> Banner	<b>J100</b> Black	Leather	<b>9F</b> Gris	<b>A</b> Soft Casters
<b>A124</b> Lapis	<b>J101</b> Charcoal			<b>B</b> Hard Glides
<b>A125</b> Brier	<b>J102</b> Smoke			<b>C</b> Soft Glides
<b>A126</b> Dove	<b>J103</b> Fleece			
<b>A127</b> Black	<b>J104</b> Khaki			
	<b>J105</b> Spice			
	<b>J106</b> Surf			

### SAMPLE ORDER CODE

<b>NJUD A127</b>	<b>E523</b>	<b>8B</b>	<b>A</b>
------------------	-------------	-----------	----------

### PRICE

Grade 1	COM/ Grade 2	COL/ Grade 3	Grade 4	Grade 5	Grade 6	Grade 7	Grade 8	Grade 9	Grade 10
1170	1198	1226	1239	1254	1268	1283	1297	1312	1328

Leather LA	Leather LB	Leather LC	Leather LD
1515	1573	1748	1807

If Soft Casters (A) are specified	add 29
If Hard Glides (B) are specified	add 29
If Soft Glides (C) are specified	add 45
If Gris (9F) frame is specified	add 111