

# storage cabinets

STORAGE CABINET BASICS . . . . .36

STORAGE CABINET LOCK CHART . . . . .36

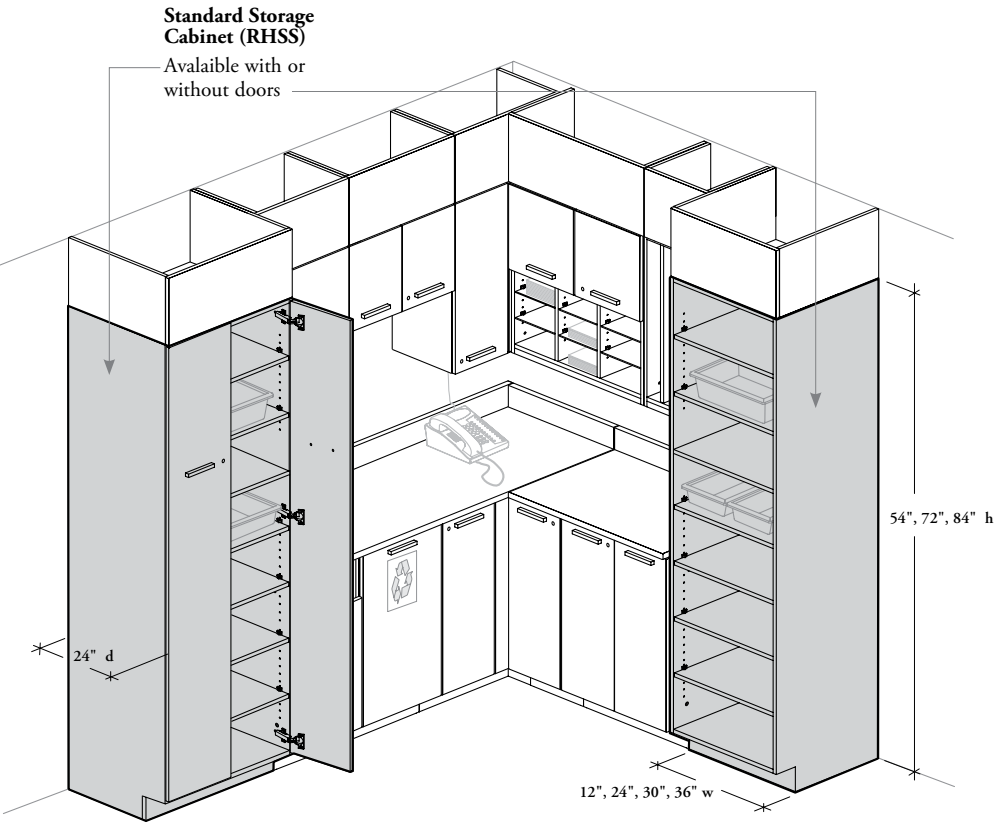
STORAGE CABINET COMPONENTS . . . . .37

STORAGE CABINET GRAIN CABINET . . . . .38

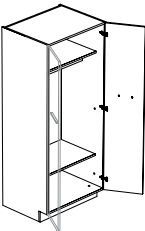
# storage cabinet basics

Storage Cabinets are available in a variety of widths and heights for maximum configuration possibilities. They can be used alone or combined with base and wall cabinets to provide convenient open or closed storage.

- ❗ Storage Cabinets overall dimensions are the actual dimensions of the finished product
- Storage Cabinets must be screwed against a wall for stability



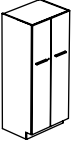
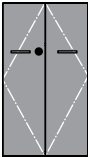
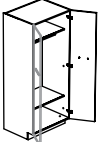
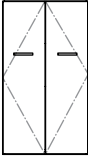
Also available:



Wardrobe Storage Cabinet (RHSWR)

Not lockable

## lock chart

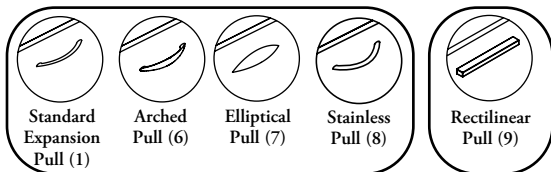
product code	description	storage cabinet width	
		24" to 36"	
 RHSSD	Door Configurations		
	Locks	1	
 RHSWR	Door Configurations		
	Locks	0	

 Lockable Double Doors     Not Lockable

## storage cabinet components

### Pulls

- Five pull styles are available:



- Interchangeable within same group
- The pulls have a distance of 128 mm between holes
- Pulls have a hand clearance of:
  - Expansion Standard (1) = (16 mm)
  - Arched (6) = (20 mm)
  - Elliptical (7) = (20 mm)
  - Stainless (8) = (26 mm)
  - Rectilinear (9) = (15 mm)
- Rectilinear pull is centered horizontally on doors; other pulls are vertical
- Pulls are available in Foundation, Accent or Mica colors (except Stainless Pull)

### Hinges

- Standard (S) hinges allow the door to open up to 120°
- Full Extension (F) hinges allow an opening of 170°

### Doors

- 12" wide cabinets come with or without door
- 24" to 36" wide cabinets come with or without doors
- Locks and Keys are optional and are available in brushed chrome finish only
- Offered in Source Laminate and Foundation Laminate colors (with Straight Edge Trim) and in Flintwood Stains (with matching Flintwood Flat Edge Trim)

### Cases

Offered in Source Laminate colors only

### Recessed Back Construction

- To access wall utilities
- Not recommended for use when back is exposed to corridor

### Shelves

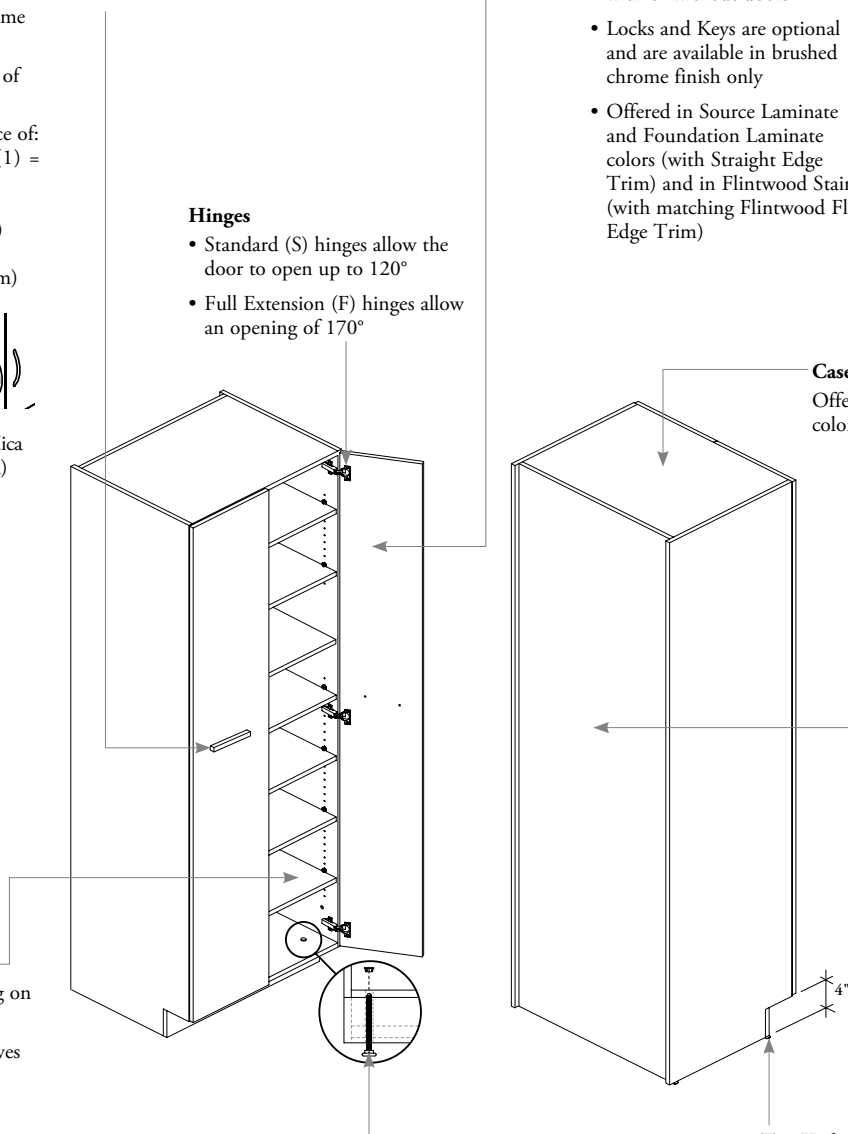
- Number varies depending on cabinet height
- Adjustable and fixed shelves come in 24" depth only
- 11/16" thick
- Come with locking shelf supports
- Shelf for Cabinet (RHASC) can be ordered separately: specify cabinet width
- Holes at 1 1/4" intervals on the inside wall of side panels allow for shelf adjustment
- Offered in Source Laminate colors only

### Levelers

- 3" leveling range
- Adjustable once installed from inside the cabinet

### Toe Kick


Matches aesthetic of adjacent base cabinets



## grain direction



- Grain/patterns are **not** "centered" on storage unit
- Includes Source Laminate, Foundation Laminate and Flintwood (Standard, Finegrain and Straightgrain)
- Drawer and door front grain direction will always be vertical

Laminate Grains  = Grain Direction = 