

This cabinet offers space for storage as well as easy access for a microwave.

**R H W M D**

**Wall Cabinet with Microwave Section**

**WHAT'S INCLUDED**

1 case, 2 doors, pulls (as specified), lock and keys (as specified), mounting hardware, and adjustable shelves as listed below:

	Heights	
	30"	36"
Adjustable Shelf	0	1

Adjustable Shelf

**WHAT'S EXCLUDED**

Wall Supports (RHAWS and RHABC).

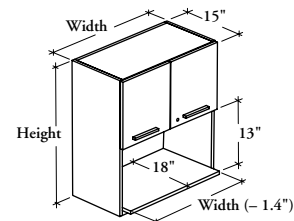
**NOTES**

Wire cut-out must be drilled by the installer.

Door Edge Trim Finish does not apply to Flintwood doors.

Pull Finish does not apply to Stainless Pull (8).

Internal width is determined by subtracting 1.4" from specified width.



**PRODUCT OPTIONS**

Depth	Width	Height	Door Finish	Door Edge Trim Finish	Case and Shelf Finish	Hinge Style	Pull Style	Pull Finish (If applicable)	Key Style (If applicable)
15	24, 27, 30, 33, 36	30, 36	Source Laminate Foundation Laminate Flintwood	Edge Trim Colors	Source Laminate	<b>S</b> Standard <b>F</b> Full Extension	<b>1</b> Standard Expansion <b>6</b> Arched <b>7</b> Elliptical <b>8</b> Stainless <b>9</b> Rectilinear	Foundation Accent Mica	<b>R</b> Keyed Randomly <b>K</b> Keyed Alike

**SAMPLE ORDER CODE**

<b>RHWMD</b> <b>15</b>	<b>24</b>	<b>36</b>	<b>XS</b>	<b>ST</b>	<b>LE</b>	<b>S</b>	<b>9</b>	<b>E</b>	<b>R</b>
---------------------------	-----------	-----------	-----------	-----------	-----------	----------	----------	----------	----------

**DIMENSIONS  
INCHES / MM**

D	W	H
15 / 381	24 / 610	30 / 762
15 / 381	24 / 610	36 / 914
15 / 381	27 / 686	30 / 762
15 / 381	27 / 686	36 / 914
15 / 381	30 / 762	30 / 762
15 / 381	30 / 762	36 / 914
15 / 381	33 / 838	30 / 762
15 / 381	33 / 838	36 / 914
15 / 381	36 / 914	30 / 762
15 / 381	36 / 914	36 / 914

**PRICING**

Source Laminate	Foundation Laminate	Flintwood
863	962	1437
970	1078	1616
899	1000	1500
1020	1130	1695
923	1031	1540
1056	1170	1757
962	1068	1601
1102	1223	1833
995	1108	1656
1151	1279	1912

If Full Extension Hinge is specified add 52  
 If Stainless Pull is specified add 52  
 If a Key Style is specified add 45