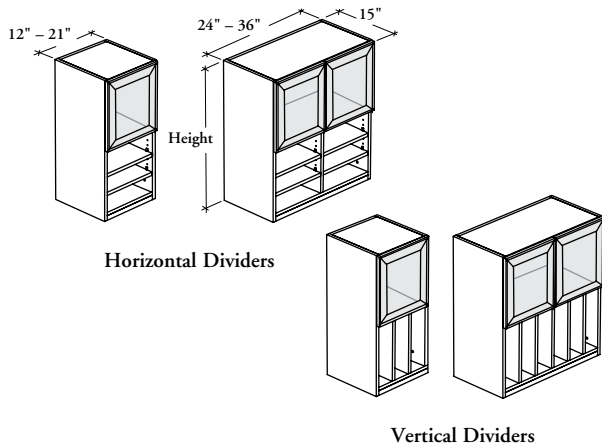


wall cabinets

R H W H D G

Wall Cabinet with Pigeonhole Section and Glass Door(s)



This cabinet offers space for storage as well as easy access for mail or forms.

WHAT'S INCLUDED

1 case, door(s) (as specified), dividers (as specified), 1 adjustable shelf (36" high cabinet), mounting hardware and doors as listed below:

	Widths								
	12"	15"	18"	21"	24"	27"	30"	33"	36"
Door	1	1	1	1	2	2	2	2	2

WHAT'S EXCLUDED

Wall Supports (RHAWs and RHABC).

NOTES

Door Swing Direction option is available for 12" to 21" wide cabinets only.

Metal horizontal dividers are colored to match the case.

PRODUCT OPTIONS

Divider Direction	Depth	Width	Height	Door Swing Direction (If applicable)	Case and Shelf Finish	Glass Finish	Frame Finish
H Laminate Horizontal	15	12, 15, 18, 21, 24, 27, 30, 33, 36	30, 36	L Left Side R Right Side	Source Laminate	CL Clear FT Frosted	Foundation Mica
V Laminate Vertical							
M Metal Horizontal							

SAMPLE ORDER CODE

RHWHDG V	15	15	36	L	XS	FT	E
---------------------------	-----------	-----------	-----------	----------	-----------	-----------	----------

DIMENSIONS INCHES / MM

D	W	H
15 / 381	12 / 305	30 / 762
15 / 381	12 / 305	36 / 914
15 / 381	15 / 381	30 / 762
15 / 381	15 / 381	36 / 914
15 / 381	18 / 457	30 / 762
15 / 381	18 / 457	36 / 914
15 / 381	21 / 533	30 / 762
15 / 381	21 / 533	36 / 914
15 / 381	24 / 610	30 / 762
15 / 381	24 / 610	36 / 914

PRICING

Clear	Frosted
1027	1132
1083	1190
1101	1206
1151	1256
1116	1224
1187	1292
1177	1283
1255	1360
1707	1925
1784	1997

DIMENSIONS INCHES / MM

D	W	H
15 / 381	27 / 686	30 / 762
15 / 381	27 / 686	36 / 914
15 / 381	30 / 762	30 / 762
15 / 381	30 / 762	36 / 914
15 / 381	33 / 838	30 / 762
15 / 381	33 / 838	36 / 914
15 / 381	36 / 914	30 / 762
15 / 381	36 / 914	36 / 914

PRICING

Clear	Frosted
1744	1959
1819	2031
1799	2017
1887	2096
1857	2075
1956	2165
1925	2142
2023	2230