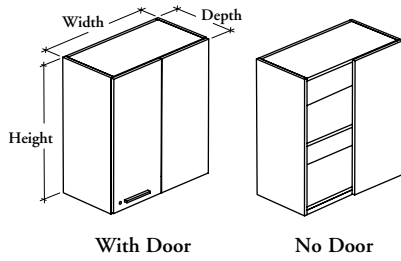


wall cabinets

R H W C

Corner Wall Cabinet



WHAT'S INCLUDED

1 case, 1 fixed panel, 1 door (if specified), pull (as specified), lock and keys (as specified), mounting hardware, and adjustable shelves as listed below:

Heights		
24"	30"	36"
Adjustable Shelf	1	2

Adjustable Shelf

WHAT'S EXCLUDED

Wall Supports (RHAWs and RHABC).

NOTES

Door and Fixed Panel Edge Trim Finish does not apply to Flintwood door and fixed panel.

Pull Finish does not apply to Stainless Pull (8).

PRODUCT OPTIONS

Door Option	Depth	Width	Height	Fixed Panel Position	Door and Fixed Panel Finish	Door and Fixed Panel Edge Trim Finish	Case and Shelf Finish	Pull Style (If applicable)	Pull Finish (If applicable)	Key Style (If applicable)
D With Door	12, 15	24, 27, 30, 33, 36	24, 30, 36	L Left Side	Source Laminate	Edge Trim Colors	Source Laminate	1 Standard Expansion	Foundation Accent	R Keyed Randomly
O No Door				R Right Side (Shown)	Foundation Laminate Flintwood			6 Arched 7 Elliptical 8 Stainless 9 Rectilinear	Mica	K Keyed Alike

SAMPLE ORDER CODE

RHWC	15	36	30	R	XS	ST	LE	1	E	K
D										

DIMENSIONS INCHES / MM

D	W	H
12 / 305	24 / 610	24 / 610
12 / 305	24 / 610	30 / 762
12 / 305	24 / 610	36 / 914
12 / 305	27 / 686	24 / 610
12 / 305	27 / 686	30 / 762
12 / 305	27 / 686	36 / 914
12 / 305	30 / 762	24 / 610
12 / 305	30 / 762	30 / 762
12 / 305	30 / 762	36 / 914
12 / 305	33 / 838	24 / 610
12 / 305	33 / 838	30 / 762
12 / 305	33 / 838	36 / 914
12 / 305	36 / 914	24 / 610
12 / 305	36 / 914	30 / 762
12 / 305	36 / 914	36 / 914

PRICING

NO DOOR (O)		
Source Laminate	Foundation Laminate	Flintwood
719	771	1159
763	811	1216
862	919	1376
766	819	1232
803	850	1283
897	955	1433
803	860	1286
822	879	1317
935	993	1489
811	869	1300
862	920	1377
971	1036	1550
835	892	1339
887	942	1415
1007	1072	1605

DIMENSIONS INCHES / MM

D	W	H
15 / 381	24 / 610	24 / 610
15 / 381	24 / 610	30 / 762
15 / 381	24 / 610	36 / 914
15 / 381	27 / 686	24 / 610
15 / 381	27 / 686	30 / 762
15 / 381	27 / 686	36 / 914
15 / 381	30 / 762	24 / 610
15 / 381	30 / 762	30 / 762
15 / 381	30 / 762	36 / 914
15 / 381	33 / 838	24 / 610
15 / 381	33 / 838	30 / 762
15 / 381	33 / 838	36 / 914
15 / 381	36 / 914	24 / 610
15 / 381	36 / 914	30 / 762
15 / 381	36 / 914	36 / 914

PRICING

Source Laminate	Foundation Laminate	Flintwood
763	815	1221
811	867	1299
909	969	1456
790	847	1267
838	891	1337
956	1022	1534
841	899	1349
875	933	1394
994	1064	1594
864	925	1385
909	969	1456
1031	1105	1648
882	944	1415
935	994	1491
1079	1152	1725

If Stainless Pull is specified add 26
If a Key Style is specified add 45

Pricing is continued on the following page.

R H W C
Corner Wall Cabinet
(Continued)

DIMENSIONS
INCHES / MM

PRICING

DIMENSIONS
INCHES / MM

PRICING

WITH DOOR (D)

D	W	H	Source Laminate	Foundation Laminate	Flintwood	D	W	H	Source Laminate	Foundation Laminate	Flintwood
12 / 305	24 / 610	24 / 610	879	965	1412	15 / 381	24 / 610	24 / 610	918	1009	1477
12 / 305	24 / 610	30 / 762	897	995	1492	15 / 381	24 / 610	30 / 762	948	1052	1578
12 / 305	24 / 610	36 / 914	1007	1116	1677	15 / 381	24 / 610	36 / 914	1057	1170	1757
12 / 305	27 / 686	24 / 610	909	999	1464	15 / 381	27 / 686	24 / 610	952	1050	1534
12 / 305	27 / 686	30 / 762	935	1038	1557	15 / 381	27 / 686	30 / 762	986	1086	1638
12 / 305	27 / 686	36 / 914	1057	1170	1757	15 / 381	27 / 686	36 / 914	1109	1221	1839
12 / 305	30 / 762	24 / 610	942	1037	1515	15 / 381	30 / 762	24 / 610	983	1085	1586
12 / 305	30 / 762	30 / 762	971	1078	1612	15 / 381	30 / 762	30 / 762	1021	1128	1692
12 / 305	30 / 762	36 / 914	1087	1211	1817	15 / 381	30 / 762	36 / 914	1155	1282	1915
12 / 305	33 / 838	24 / 610	970	1070	1568	15 / 381	33 / 838	24 / 610	1015	1116	1639
12 / 305	33 / 838	30 / 762	1007	1116	1677	15 / 381	33 / 838	30 / 762	1057	1170	1757
12 / 305	33 / 838	36 / 914	1141	1263	1902	15 / 381	33 / 838	36 / 914	1201	1335	1999
12 / 305	36 / 914	24 / 610	1005	1105	1617	15 / 381	36 / 914	24 / 610	1044	1152	1691
12 / 305	36 / 914	30 / 762	1042	1159	1737	15 / 381	36 / 914	30 / 762	1087	1211	1817
12 / 305	36 / 914	36 / 914	1176	1303	1956	15 / 381	36 / 914	36 / 914	1250	1384	2081

If Stainless Pull is specified add 26
 If a Key Style is specified add 45