

The Wardrobe Storage Cabinet is offered in a variety of heights to meet a variety of storage requirements.

WHAT'S INCLUDED

1 case, 2 doors, pulls (as specified), 1 coat rod, hardware, levelers and shelves as listed below:

	Heights		
	54"	72"	84"
Fixed Shelf	1	2	2

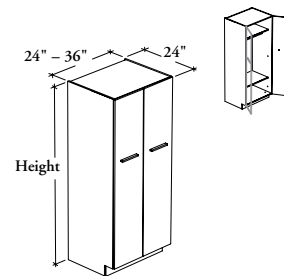
Fixed Shelf

NOTES

Door Edge Trim Finish does not apply to Flintwood doors.

Pull Finish does not apply to Stainless Pull (8).

R H S W R
Wardrobe Storage Cabinet



PRODUCT OPTIONS

Depth	Width	Height	Door Finish	Door Edge Trim Finish	Case and Shelf Finish	Hinge Style	Pull Style	Pull Finish (If applicable)
24	24, 30, 36	54, 72, 84	Source Laminate Foundation Laminate Flintwood	Edge Trim Colors	Source Laminate	S Standard F Full Extension	1 Standard Expansion 6 Arched 7 Elliptical 8 Stainless 9 Rectilinear	Foundation Accent Mica

SAMPLE ORDER CODE

RHSWR 24	30	84	XS	ST	XS	S	1	E
-----------------	-----------	-----------	-----------	-----------	-----------	----------	----------	----------

DIMENSIONS
INCHES / MM

D	W	H
24 / 610	24 / 610	54 / 1372
24 / 610	24 / 610	72 / 1829
24 / 610	24 / 610	84 / 2134
24 / 610	30 / 762	54 / 1372
24 / 610	30 / 762	72 / 1829
24 / 610	30 / 762	84 / 2134
24 / 610	36 / 914	54 / 1372
24 / 610	36 / 914	72 / 1829
24 / 610	36 / 914	84 / 2134

PRICING

Source Laminate	Foundation Laminate	Flintwood
1438	1609	2738
1717	1923	3268
1890	2120	3605
1554	1738	2959
1880	2105	3576
2056	2301	3912
1682	1885	3204
2031	2275	3867
2216	2485	4219

If Full Extension Hinge is specified add 78
If Stainless Pull is specified add 52