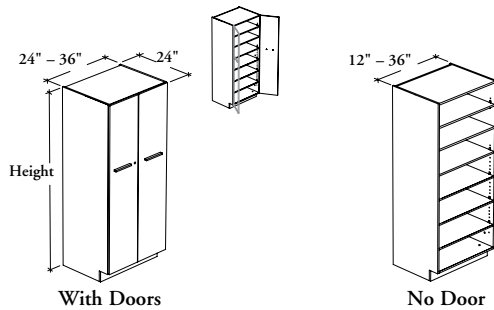


storage cabinets

R H S S

Standard Storage Cabinet



The Standard Storage Cabinet offers high capacity storage. It can easily be combined with other cabinets to provide different configurations.

WHAT'S INCLUDED

1 case, 2 doors (as specified), pulls (as specified), lock and keys (as specified), levels and shelves listed below:

	Heights		
	54"	72"	84"
Adjustable Shelf	4	5	6
Fixed Shelf	0	1	1

NOTES

Door Edge Trim Finish does not apply to Flintwood doors.

Pull Finish does not apply to Stainless Pull (8).

Adjustable and fixed shelves come in 24" depth only.

PRODUCT OPTIONS

Door Option	Depth	Width	Height	Door Finish (If applicable)	Door Edge Trim Finish (If applicable)	Case and Shelf Finish	Hinge Style (If applicable)	Pull Style (If applicable)	Pull Finish (If applicable)	Key Style (If applicable)
D With Doors	24	12, 24, 30, 36	54, 72, 84	Source Laminate	Edge Trim Colors	Source Laminate	S Standard F Full Extension	1 Standard Expansion 6 Arched 7 Elliptical 8 Stainless 9 Rectilinear	Foundation Accent Mica	R Keyed Randomly
O No Door				Foundation Laminate Flintwood						K Keyed Alike

SAMPLE ORDER CODE

RHSS D	24	24	72	XS	ST	XS	S	7	E	R
---------------	-----------	-----------	-----------	-----------	-----------	-----------	----------	----------	----------	----------

DIMENSIONS INCHES / MM

D	W	H
24 / 610	12 / 305	54 / 1372
24 / 610	12 / 305	72 / 1829
24 / 610	12 / 305	84 / 2134
24 / 610	24 / 610	54 / 1372
24 / 610	24 / 610	72 / 1829
24 / 610	24 / 610	84 / 2134
24 / 610	30 / 762	54 / 1372
24 / 610	30 / 762	72 / 1829
24 / 610	30 / 762	84 / 2134
24 / 610	36 / 914	54 / 1372
24 / 610	36 / 914	72 / 1829
24 / 610	36 / 914	84 / 2134

PRICING

NO DOOR (O)

930
1180
1324
1197
1554
1754
1336
1738
1960
1473
1926
2173

WITH DOORS (D)

Source Laminate	Foundation Laminate	Flintwood
n/a	n/a	n/a
n/a	n/a	n/a
n/a	n/a	n/a
1578	1769	3002
1971	2207	3751
2216	2485	4219
1738	1949	3312
2182	2445	4149
2450	2741	4663
1904	2130	3618
2384	2675	4548
2689	3015	5125

If Full Extension Hinge is specified	add 78
If Stainless Pull is specified	add 52
If a Key Style is specified	add 45