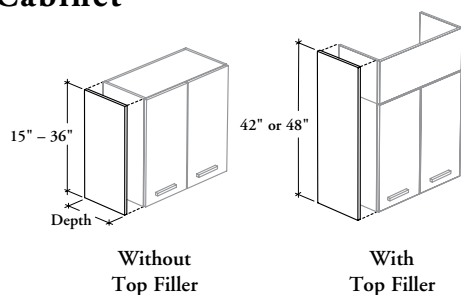


## RHALEP

### Laminate End Panel for Wall Cabinet



This solid component is used when a row of Wall Cabinets is further than 6" from the wall. This panel conceals the 3/4" gap between the wall cabinet and the wall or holes drilled on the side after purchase.

**WHAT'S INCLUDED**

1 reversible end panel and hardware.

**NOTES**

Height is determined by combining the height of the Wall Cabinet with the height of the Top Filler (RHAF1).

Panel Edge Trim Finish does not apply to Flintwood panel.

**PRODUCT OPTIONS**

Depth	Height	Panel Finish	Panel Edge Trim Finish (If applicable)
12, 15	15, 21, 24, 27, 30, 36, 42, 48	Source Laminate Foundation Laminate Flintwood	Edge Trim Colors

**SAMPLE ORDER CODE**

<b>RHALEP 15</b>	<b>42</b>	<b>LW</b>	<b>ST</b>
------------------	-----------	-----------	-----------

**DIMENSIONS  
INCHES / MM**

D	H
12 / 305	15 / 381
12 / 305	21 / 533
12 / 305	24 / 610
12 / 305	27 / 686
12 / 305	30 / 762
12 / 305	36 / 914
12 / 305	42 / 1067
12 / 305	48 / 1219
15 / 381	15 / 381
15 / 381	21 / 533
15 / 381	24 / 610
15 / 381	27 / 686
15 / 381	30 / 762
15 / 381	36 / 914
15 / 381	42 / 1067
15 / 381	48 / 1219

**PRICING**

Source Laminate	Foundation Laminate	Flintwood
77	84	137
82	92	150
85	94	164
90	96	168
93	99	175
108	124	204
124	135	233
137	153	254
81	89	144
90	96	167
93	103	172
99	116	187
113	124	209
129	144	240
144	166	278
167	179	304