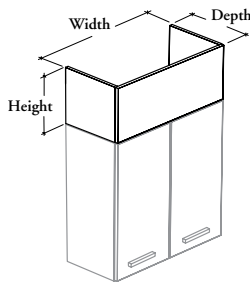


## RHAFT Top Filler



The Top Filler is used to prevent dust accumulation on top of a Wall Cabinet or Storage Cabinet.

### WHAT'S INCLUDED

1 front panel, 2 side panels, 2 brackets, and hardware.

### NOTES

The Top Filler must always have the same dimensions as the cabinet over which it is installed.

If Flintwood front finish is specified, let blank Front Edge Trim Finish option.

It **cannot** be shared between two wall cabinets.

### PRODUCT OPTIONS

| Depth      | Width                                      | Height | Front Finish  | Front Edge Trim Finish<br>(If applicable) | Case Finish     |
|------------|--|--------|---|---|-----------------|
| 12, 15, 24 | 12, 15, 18, 21, 24, 27, 30, 33, 36, 42, 48 | 06, 12 | Source Laminate<br>Foundation Laminate<br>Flintwood | Edge Trim Colors                          | Source Laminate |

### SAMPLE ORDER CODE

|                 |           |           |           |           |           |
|-----------------|-----------|-----------|-----------|-----------|-----------|
| <b>RHAFT 15</b> | <b>12</b> | <b>06</b> | <b>XS</b> | <b>ST</b> | <b>XS</b> |
|-----------------|-----------|-----------|-----------|-----------|-----------|

### DIMENSIONS INCHES / MM

| D        | W         | H       |
|----------|-----------|---------|
| 12 / 305 | 12 / 305  | 6 / 152 |
| 12 / 305 | 15 / 381  | 6 / 152 |
| 12 / 305 | 18 / 457  | 6 / 152 |
| 12 / 305 | 21 / 533  | 6 / 152 |
| 12 / 305 | 24 / 610  | 6 / 152 |
| 12 / 305 | 27 / 686  | 6 / 152 |
| 12 / 305 | 30 / 762  | 6 / 152 |
| 12 / 305 | 33 / 838  | 6 / 152 |
| 12 / 305 | 36 / 914  | 6 / 152 |
| 12 / 305 | 42 / 1067 | 6 / 152 |
| 12 / 305 | 48 / 1219 | 6 / 152 |
| 15 / 381 | 12 / 305  | 6 / 152 |
| 15 / 381 | 15 / 381  | 6 / 152 |
| 15 / 381 | 18 / 457  | 6 / 152 |
| 15 / 381 | 21 / 533  | 6 / 152 |
| 15 / 381 | 24 / 610  | 6 / 152 |
| 15 / 381 | 27 / 686  | 6 / 152 |
| 15 / 381 | 30 / 762  | 6 / 152 |
| 15 / 381 | 33 / 838  | 6 / 152 |
| 15 / 381 | 36 / 914  | 6 / 152 |
| 15 / 381 | 42 / 1067 | 6 / 152 |
| 15 / 381 | 48 / 1219 | 6 / 152 |

### PRICING

| 6" HEIGHT       |                     |           |
|-----------------|---------------------|-----------|
| Source Laminate | Foundation Laminate | Flintwood |
| 172             | 191                 | 320       |
| 180             | 199                 | 336       |
| 187             | 204                 | 347       |
| 191             | 211                 | 360       |
| 200             | 218                 | 370       |
| 204             | 227                 | 381       |
| 211             | 234                 | 396       |
| 218             | 240                 | 406       |
| 226             | 247                 | 419       |
| 237             | 258                 | 442       |
| 244             | 266                 | 453       |
| 180             | 199                 | 336       |
| 187             | 204                 | 347       |
| 191             | 211                 | 360       |
| 200             | 218                 | 370       |
| 204             | 227                 | 381       |
| 211             | 234                 | 396       |
| 218             | 240                 | 406       |
| 226             | 247                 | 419       |
| 237             | 258                 | 442       |
| 244             | 266                 | 453       |
| 255             | 277                 | 473       |

Pricing is continued on the following page.

## R H A F T Top Filler (Continued)

### DIMENSIONS INCHES / MM

| D        | W         | H       |
|----------|-----------|---------|
| 24 / 610 | 12 / 305  | 6 / 152 |
| 24 / 610 | 15 / 381  | 6 / 152 |
| 24 / 610 | 18 / 457  | 6 / 152 |
| 24 / 610 | 21 / 533  | 6 / 152 |
| 24 / 610 | 24 / 610  | 6 / 152 |
| 24 / 610 | 27 / 686  | 6 / 152 |
| 24 / 610 | 30 / 762  | 6 / 152 |
| 24 / 610 | 33 / 838  | 6 / 152 |
| 24 / 610 | 36 / 914  | 6 / 152 |
| 24 / 610 | 42 / 1067 | 6 / 152 |
| 24 / 610 | 48 / 1219 | 6 / 152 |

|          |           |          |
|----------|-----------|----------|
| 12 / 305 | 12 / 305  | 12 / 305 |
| 12 / 305 | 15 / 381  | 12 / 305 |
| 12 / 305 | 18 / 457  | 12 / 305 |
| 12 / 305 | 21 / 533  | 12 / 305 |
| 12 / 305 | 24 / 610  | 12 / 305 |
| 12 / 305 | 27 / 686  | 12 / 305 |
| 12 / 305 | 30 / 762  | 12 / 305 |
| 12 / 305 | 33 / 838  | 12 / 305 |
| 12 / 305 | 36 / 914  | 12 / 305 |
| 12 / 305 | 42 / 1067 | 12 / 305 |
| 12 / 305 | 48 / 1219 | 12 / 305 |

|          |           |          |
|----------|-----------|----------|
| 15 / 381 | 12 / 305  | 12 / 305 |
| 15 / 381 | 15 / 381  | 12 / 305 |
| 15 / 381 | 18 / 457  | 12 / 305 |
| 15 / 381 | 21 / 533  | 12 / 305 |
| 15 / 381 | 24 / 610  | 12 / 305 |
| 15 / 381 | 27 / 686  | 12 / 305 |
| 15 / 381 | 30 / 762  | 12 / 305 |
| 15 / 381 | 33 / 838  | 12 / 305 |
| 15 / 381 | 36 / 914  | 12 / 305 |
| 15 / 381 | 42 / 1067 | 12 / 305 |
| 15 / 381 | 48 / 1219 | 12 / 305 |

|          |           |          |
|----------|-----------|----------|
| 24 / 610 | 12 / 305  | 12 / 305 |
| 24 / 610 | 15 / 381  | 12 / 305 |
| 24 / 610 | 18 / 457  | 12 / 305 |
| 24 / 610 | 21 / 533  | 12 / 305 |
| 24 / 610 | 24 / 610  | 12 / 305 |
| 24 / 610 | 27 / 686  | 12 / 305 |
| 24 / 610 | 30 / 762  | 12 / 305 |
| 24 / 610 | 33 / 838  | 12 / 305 |
| 24 / 610 | 36 / 914  | 12 / 305 |
| 24 / 610 | 42 / 1067 | 12 / 305 |
| 24 / 610 | 48 / 1219 | 12 / 305 |

### PRICING

#### 6" HEIGHT (CONTINUED)

| Source Laminate | Foundation Laminate | Flintwood |
|-----------------|---------------------|-----------|
| 191             | 211                 | 360       |
| 200             | 218                 | 370       |
| 204             | 227                 | 381       |
| 211             | 234                 | 396       |
| 218             | 240                 | 406       |
| 226             | 247                 | 419       |
| 231             | 254                 | 430       |
| 237             | 258                 | 442       |
| 244             | 266                 | 453       |
| 255             | 277                 | 473       |
| 273             | 300                 | 508       |

#### 12" HEIGHT

| Source Laminate | Foundation Laminate | Flintwood |
|-----------------|---------------------|-----------|
| 245             | 272                 | 456       |
| 255             | 279                 | 475       |
| 265             | 293                 | 494       |
| 273             | 300                 | 511       |
| 283             | 310                 | 527       |
| 293             | 321                 | 545       |
| 300             | 334                 | 562       |
| 307             | 340                 | 577       |
| 320             | 350                 | 595       |
| 352             | 389                 | 661       |
| 362             | 398                 | 678       |
| 255             | 279                 | 475       |
| 265             | 293                 | 494       |
| 273             | 300                 | 511       |
| 283             | 310                 | 527       |
| 293             | 321                 | 545       |
| 300             | 334                 | 562       |
| 307             | 340                 | 577       |
| 320             | 350                 | 595       |
| 330             | 360                 | 616       |
| 362             | 398                 | 678       |
| 380             | 419                 | 708       |
| 273             | 300                 | 511       |
| 283             | 310                 | 527       |
| 293             | 321                 | 545       |
| 300             | 334                 | 562       |
| 307             | 340                 | 577       |
| 320             | 350                 | 595       |
| 330             | 360                 | 616       |
| 337             | 370                 | 630       |
| 346             | 379                 | 646       |
| 380             | 419                 | 708       |
| 409             | 448                 | 760       |