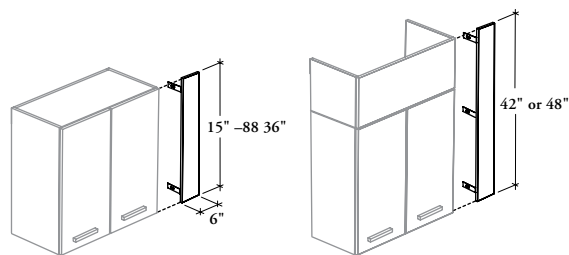


## R H A F S

### Side Filler for Wall Cabinet



The Side Filler is used to fill a gap between 1" and 6".

#### WHAT'S INCLUDED

1 front panel, 2 brackets, and hardware.

#### NOTES

Height is determined by combining the height of the Wall Cabinet with the height of the Top Filler (RHAFT).

Front Edge Trim Finish does not apply to Flintwood front.

#### PRODUCT OPTIONS

Width	Height	Front Finish	Edge Trim Finish (If applicable)
06	15, 21, 24, 27, 30, 36, 42, 48	Source Laminate Foundation Laminate Flintwood	Edge Trim Colors

#### SAMPLE ORDER CODE

<b>RHAFS 06</b>	<b>36</b>	<b>XS</b>	<b>ST</b>
-----------------	-----------	-----------	-----------

#### DIMENSIONS INCHES / MM

W	H
6 / 152	15 / 381
6 / 152	21 / 533
6 / 152	24 / 610
6 / 152	27 / 686
6 / 152	30 / 762
6 / 152	36 / 914
6 / 152	42 / 1067
6 / 152	48 / 1219

#### PRICING

Source Laminate	Foundation Laminate	Flintwood
146	158	271
152	170	283
154	175	293
158	180	300
166	183	310
172	195	324
183	203	347
191	215	359