

The Side Filler is used to fill gaps between Base or Storage Cabinets and the wall.

#### WHAT'S INCLUDED

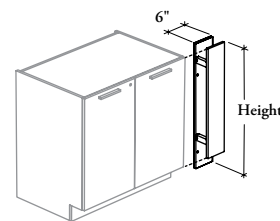
1 front panel, 1 rear panel, 2 brackets, and hardware.

#### NOTES

Front Panel Edge Trim Finish does not apply to Flintwood front panel.

**R H A F B**

## Side Filler for Base and Storage Cabinets



#### PRODUCT OPTIONS

| Width | Height             | Front Panel Finish                                  | Front Panel Edge Trim Finish<br>(If applicable) | Rear Panel Finish |
|-------|--------------------|---|---|-------------------|
| 06    | 33, 35, 54, 72, 84 | Source Laminate<br>Foundation Laminate<br>Flintwood | Edge Trim Colors                                | Source Laminate   |

#### SAMPLE ORDER CODE

|                 |           |           |           |           |
|-----------------|-----------|-----------|-----------|-----------|
| <b>RHAFB 06</b> | <b>35</b> | <b>XS</b> | <b>ST</b> | <b>XS</b> |
|-----------------|-----------|-----------|-----------|-----------|

#### DIMENSIONS INCHES / MM

| W       | H         |
|---------|-----------|
| 6 / 152 | 33 / 838  |
| 6 / 152 | 35 / 889  |
| 6 / 152 | 54 / 1372 |
| 6 / 152 | 72 / 1829 |
| 6 / 152 | 84 / 2134 |

#### PRICING

| Source Laminate | Foundation Laminate | Flintwood |
|-----------------|---------------------|-----------|
| 240             | 266                 | 452       |
| 240             | 266                 | 452       |
| 492             | 550                 | 926       |
| 540             | 602                 | 1012      |
| 569             | 636                 | 1076      |