

This metal component is used when a row of Wall Cabinets is further than 6" from the wall. It can also be used as a magnetic board. This panel conceals the 3/4" gap between the wall cabinet and the wall or holes drilled on the side after purchase.

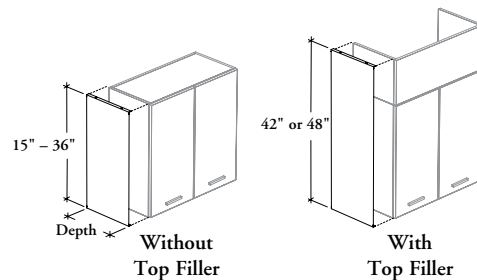
WHAT'S INCLUDED

1 metal end panel and hardware.

NOTES

Height is determined by combining the height of the Wall Cabinet with the height of the Top Filler (RHAFT).

R H A E P
Metal End Panel for Wall Cabinet



PRODUCT OPTIONS

Depth	Height	Panel Position	Finish
12, 15	15, 21, 24, 27, 30, 36, 42, 48	L Left Handed (Shown) R Right Handed	Foundation Accent Mica

SAMPLE ORDER CODE

RHAEP 15	42	L	E
-----------------	-----------	----------	----------

DIMENSIONS
INCHES / MM

D	H
12 / 305	15 / 381
12 / 305	21 / 533
12 / 305	24 / 610
12 / 305	27 / 686
12 / 305	30 / 762
12 / 305	36 / 914
12 / 305	42 / 1067
12 / 305	48 / 1219
15 / 381	15 / 381
15 / 381	21 / 533
15 / 381	24 / 610
15 / 381	27 / 686
15 / 381	30 / 762
15 / 381	36 / 914
15 / 381	42 / 1067
15 / 381	48 / 1219

PRICING

Foundation	Mica/Accent
77	82
81	90
82	92
85	94
90	95
92	99
99	116
121	132
96	110
107	119
108	121
116	125
118	126
121	131
126	139
142	161