

base cabinets

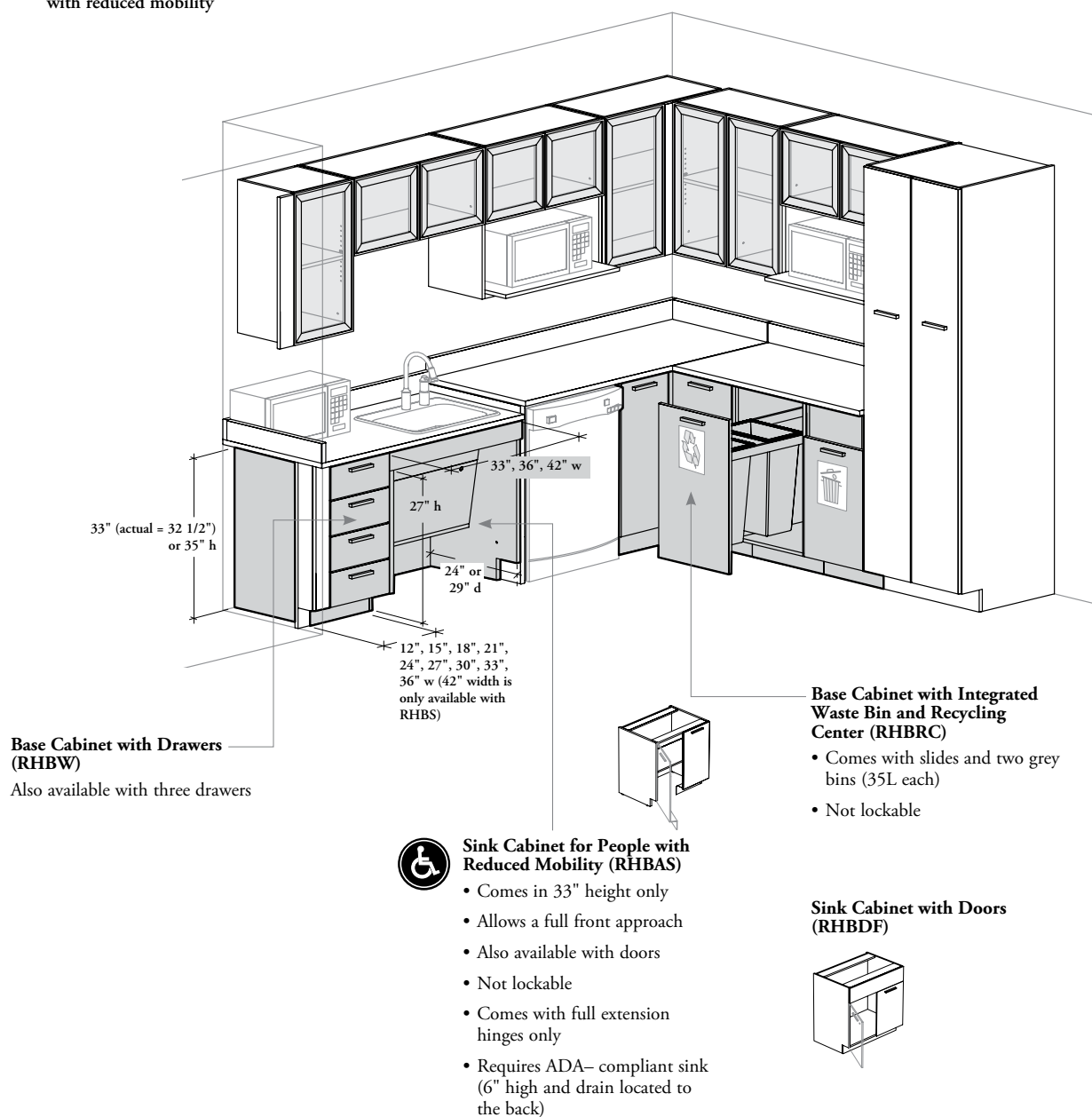
- BASE CABINET BASICS28
- BASE CABINET COMPONENTS30
- BASE CABINET LOCK CHART31
- BASE CABINET DIVISION CHART31
- BASE CABINET GRAIN DIRECTION32

base cabinet basics

- Base Cabinets overall dimensions are the actual dimensions of the finished product including doors
- All Base Cabinets are available in 33" height and allow a lateral approach to people with reduced mobility
- Base Cabinets are offered lockable, except the RHBAS, RHBRC and RHBSW cabinets
- Base Cabinets are not mobile
- Base Cabinets must be covered by a countertop
- Base Cabinets must be screwed against a wall for stability
- Some base cabinets (RHBD, RHBRC, RHBW, RHBCP and RHBASD) **cannot** be used in a corner



This symbol is used for products designed for people with reduced mobility



Base Cabinet with Drawers (RHBW)
Also available with three drawers



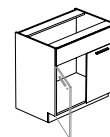
Sink Cabinet for People with Reduced Mobility (RHBAS)

- Comes in 33" height only
- Allows a full front approach
- Also available with doors
- Not lockable
- Comes with full extension hinges only
- Requires ADA-compliant sink (6" high and drain located to the back)

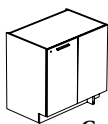
Base Cabinet with Integrated Waste Bin and Recycling Center (RHBRC)

- Comes with slides and two grey bins (35L each)
- Not lockable

Sink Cabinet with Doors (RHBDF)

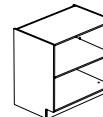


base cabinet basics (continued)

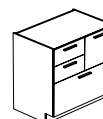


Corner Base Cabinet (RHBCD)
Comes with standard hinges only

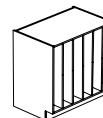
Also available:



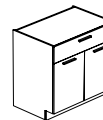
Standard Base Cabinet (RHBS)
Also available without door



Combo Base Cabinet (RHBCP)
15" cross file bars install along the depth in the 30" file drawer

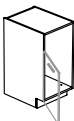
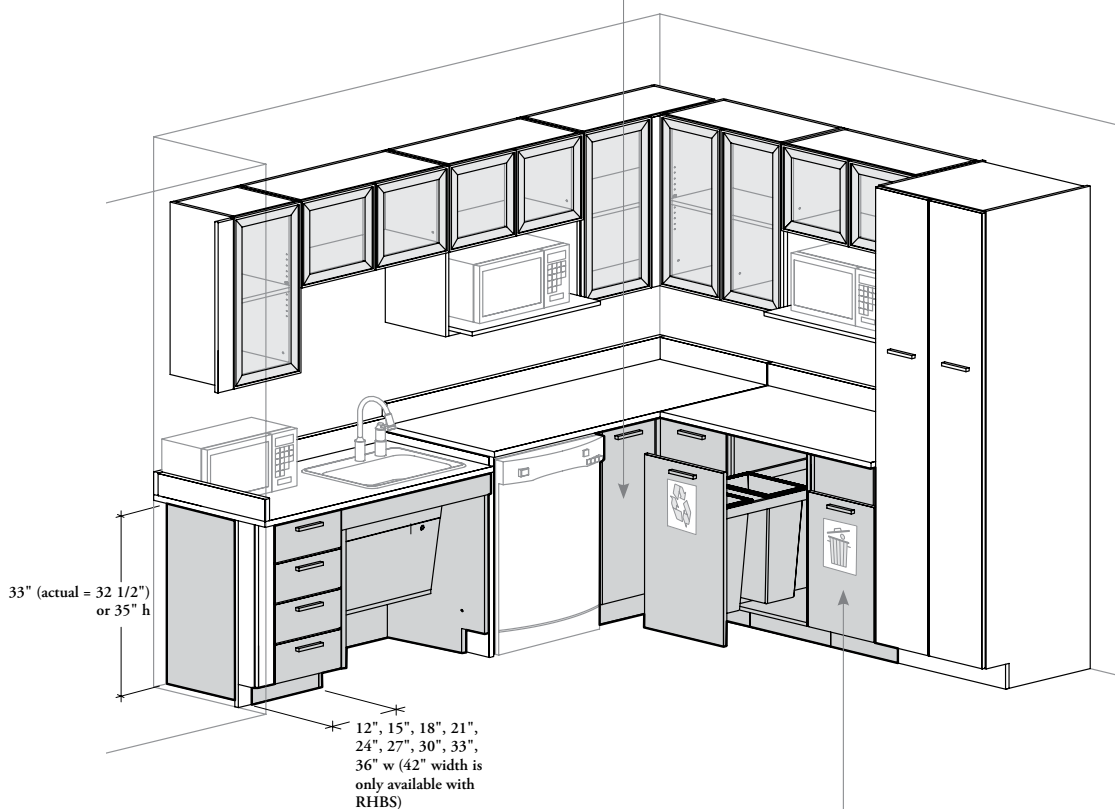


Pigeonhole Base Cabinet (RHBP)



Base Cabinet with Drawer(s) and Door(s) (RHBD)

- 12" to 21" wide cabinets come with one drawer and one door
- 24" to 36" wide cabinets come with one or two drawers and two doors
- For cabinets with one drawer, only the drawer will lock. For cabinets with two drawers, only the right drawer will lock



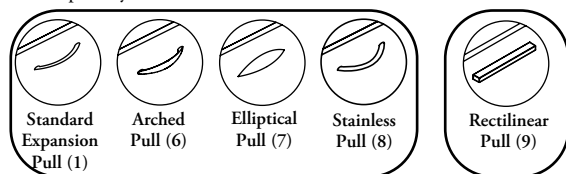
Base Cabinet for Waste and Recycle Bin (RHBSW)

- Comes with a door
- Bin not included
- Not lockable
- Comes with standard hinges only

base cabinet components

Pulls

- Five pull styles are available:



- Interchangeable within same group
- The pulls have a distance of 128 mm between holes
- Pulls have a hand clearance of:
 - Expansion Standard (1) = (16 mm)
 - Arched (6) = (20 mm)
 - Elliptical (7) = (20 mm)
 - Stainless (8) = (26 mm)
 - Rectilinear (9) = (15 mm)
- Rectilinear pull is centered horizontally on doors; other pulls are vertical on doors and horizontal on drawers
- Pulls are available in Foundation, Accent or Mica colors (except Stainless Pull)



Hinges

- Standard (S) hinges allow the door to open up to 120°
- Full Extension (F) hinges allow an opening of 170°

Doors

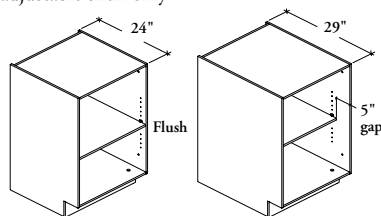
- 12" to 21" wide cabinets come with one door
- 24" to 42" wide cabinets come with two doors
- Locks and Keys are optional and are available in brushed chrome finish only
- Available in Source Laminate and Foundation Laminate colors (with Straight Edge Trim) and in Flintwood Stains (with matching Flintwood Flat Edge Trim)

Cases and Dividers

- 42" wide cabinet comes with one central divider
- Offered in Source Laminate colors only

Shelves

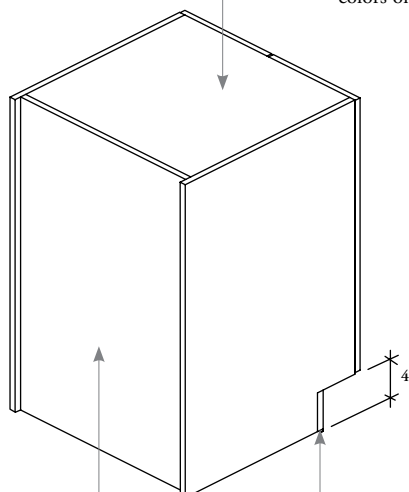
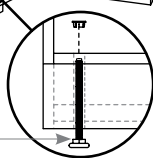
- 11/16" thick
- Come with locking shelf supports
- Shelf for Cabinet (RHASC) can be ordered separately: specify cabinet width
- Holes at 1 1/4" intervals on the inside wall of side panels allow for shelf adjustment
- 24" or 29" deep base cabinets come with one 24" deep adjustable shelf only



- Offered in Source Laminate colors only

Levelers

- 3" leveling range
- Adjustable once installed from inside the cabinet



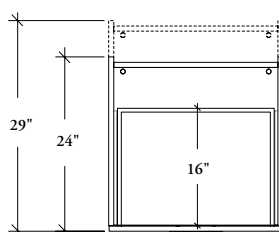
Toe Kick

Recessed Back Construction

- To access wall utilities
- Not recommended for use when back is exposed to corridor

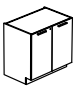


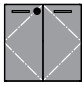
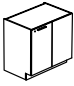
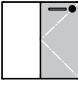
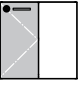



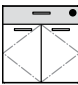


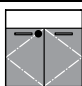
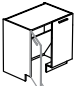
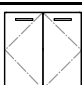

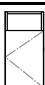






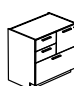
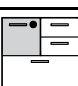
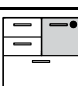
Drawers

- Drawers will be 16" deep overall no matter what cabinet depth is specified
- All drawers have full extension slides
- Locks and Keys are optional and are available in brushed chrome finish only
- Drawer Fronts are available in Source Laminate and Foundation Laminate colors (with Straight Edge Trim) and in Flintwood Stains (with matching Flintwood Flat Edge Trim)



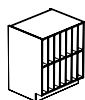
lock chart

! • Interior depth of all pigeonholes is 21 3/4"



product code	description	base cabinet width	
		12" to 21"	24" to 42"
 RHBSD	Door Configurations	Left  or  Right	
	Locks	1	1
 RHBCD	Door Configurations	n/a	Left  or  Right
	Locks	n/a	1
 RHBD	Door / Drawer Configurations	Left  or  Right	 or 
	Locks	1	1
 RHBDF	Door Configurations	n/a	
	Locks	n/a	1
 RHBASD	Door Configurations	n/a	
	Locks	n/a	0
 RHBSW	Door Configurations	Left  or  Right	n/a
	Locks	0	n/a
 RHBW	Drawer Configurations	 or 	 or 
	Locks	1	1
 RHBCP	Drawer Configurations	n/a	Left  or  Right
	Locks	n/a	1

 Lockable Double Doors  Lockable Single Door  Lockable Drawers  Not Lockable

division chart

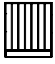
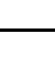


RHBPBS (fixed dividers)

Cabinet width		12"	15"	18"	21"	24"	27"	30"	33"	36"
 33" high	Slot	6	8	8	10	12	12	14	16	18
	W	3 1/16"	2 7/8"	3 5/8"	3 3/8"	3 3/16"	3 11/16"	3 1/2"	3 5/16"	3 1/4"
	H	13"	13"	13"	13"	13"	13"	13"	13"	13"
 35" high	Slot	6	8	8	10	12	12	14	16	18
	W	3 1/16"	2 7/8"	3 5/8"	3 3/8"	3 3/16"	3 11/16"	3 1/2"	3 5/16"	3 1/4"
	H	14 1/4"	14 1/4"	14 1/4"	14 1/4"	14 1/4"	14 1/4"	14 1/4"	14 1/4"	14 1/4"



RHBPP (fixed dividers)

Cabinet width		12"	15"	18"	21"	24"	27"	30"	33"	36"
 33" high	Slot	3	4	4	5	6	6	7	8	9
	W	3 1/16"	2 7/8"	3 5/8"	3 3/8"	3 3/16"	3 11/16"	3 1/2"	3 5/16"	3 1/4"
	H	26 3/4"	26 3/4"	26 3/4"	26 3/4"	26 3/4"	26 3/4"	26 3/4"	26 3/4"	26 3/4"
 35" high	Slot	3	4	4	5	6	6	7	8	9
	W	3 1/16"	2 7/8"	3 5/8"	3 3/8"	3 3/16"	3 11/16"	3 1/2"	3 5/16"	3 1/4"
	H	29 1/4"	29 1/4"	29 1/4"	29 1/4"	29 1/4"	29 1/4"	29 1/4"	29 1/4"	29 1/4"

grain direction



- Grain/patterns are **not** "centered" on storage unit
- Includes Source Laminate, Foundation Laminate and Flintwood (Standard, Finegrain and Straightgrain)
- Drawer and door front grain direction will always be vertical

Laminate Grains  = Grain Direction = 

