

accessories

ACCESSORY BASICS42

accessory basics

Accessories are used to complete an installation and are easy to configure, order and install. Fillers are available to fill gaps between the wall or ceiling and the cabinet.

- The overall dimensions are the actual dimensions of the finished product
- Fillers are predrilled to fit with the appropriate cabinet

wall cabinet accessories

Side Filler for Wall Cabinet (RHAFS)

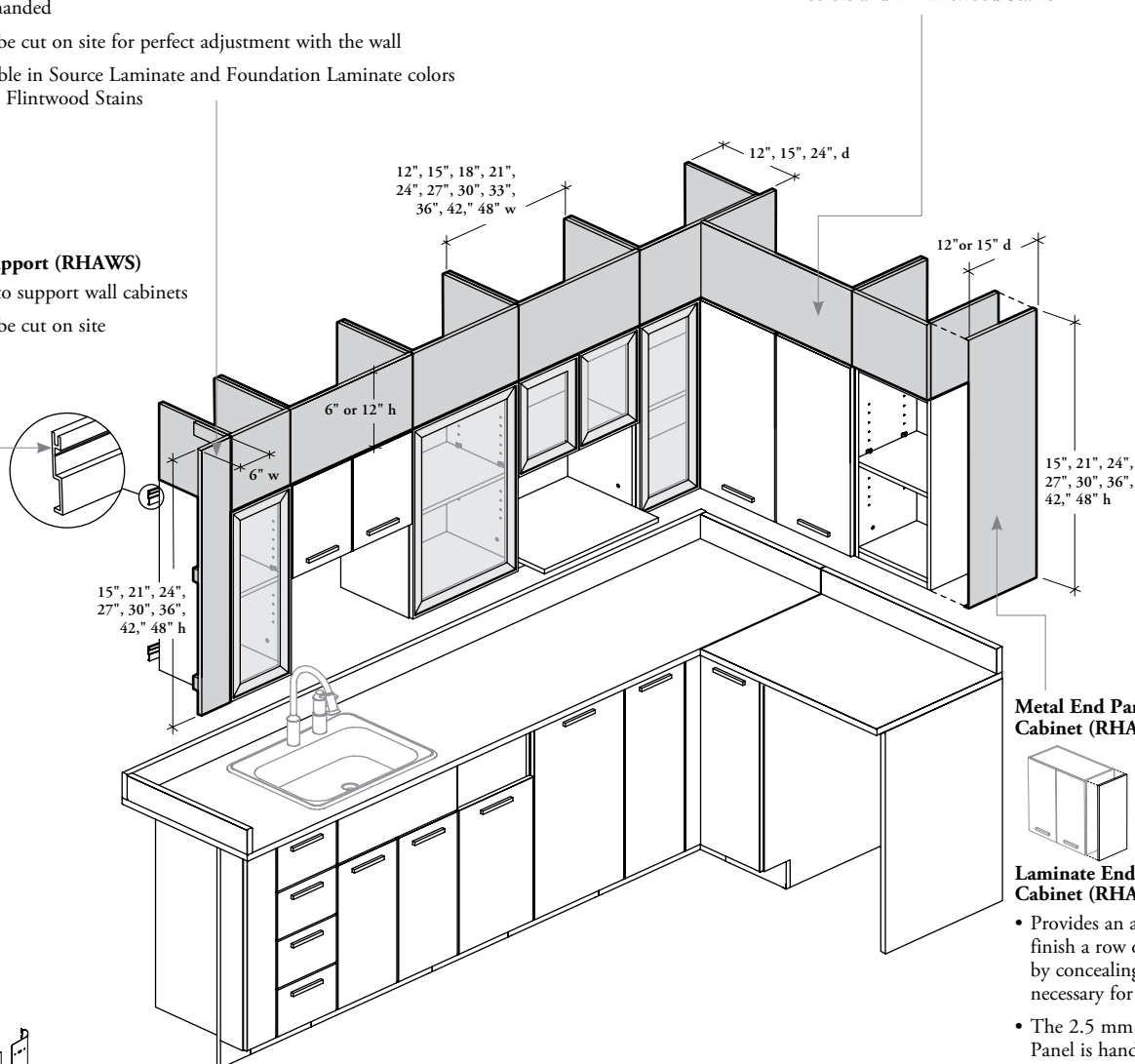
- Can be aligned with the door front or with the case
- Non-handed
- Must be cut on site for perfect adjustment with the wall
- Available in Source Laminate and Foundation Laminate colors and in Flintwood Stains

Top Filler (RHAFT)

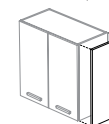
- Cannot be shared between two Wall Cabinets
- Available in Source Laminate and Foundation Laminate colors and in Flintwood Stains

Wall Support (RHAWS)

- Used to support wall cabinets
- Must be cut on site

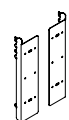


Metal End Panel for Wall Cabinet (RHAEP) or



Laminate End Panel for Wall Cabinet (RHALEP)

- Provides an aesthetic way to finish a row of Wall Cabinets by concealing the 3/4" gap necessary for installation
- The 2.5 mm Metal End Panel is handed
- Laminate End Panel is 11 /16" thick and is non-handed
- Available in Foundation, Mica and Accent powder paint colors (metal) or Source Laminate and Foundation Laminate colors and in Flintwood Stains (laminate)



Wall Cabinet Support Kit for Altos (RHABC)

- Used to support wall cabinets on Altos Wall only
- Available in Foundation, Accent or Mica colors

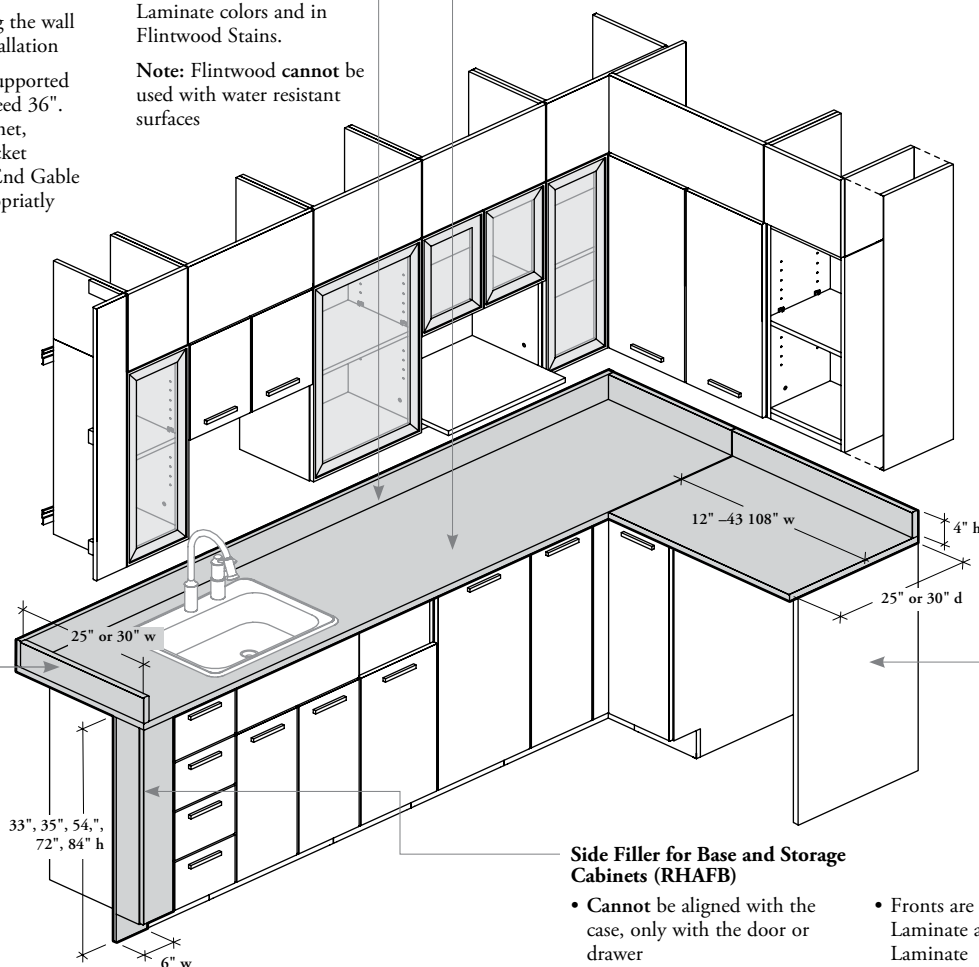
accessory basics (continued)

base cabinet accessories

Countertop (RHACT), Backsplash (RHABSH) and Sidesplash (RHABSC)

- 1 3/16" (3 mm) thick with trims overall sides
- Standard or Water Resistant construction
- Can be cut along the wall for a perfect installation
- Countertop unsupported span **cannot** exceed 36". Use a Base Cabinet, Countertop Bracket (RHACTB) or End Gable (RHAEG) appropriately
- Sidesplash is only used on depth side of surfaces where it meets the rear backsplash
- Available in Foundation Laminate colors and in Flintwood Stains.

Note: Flintwood **cannot** be used with water resistant surfaces

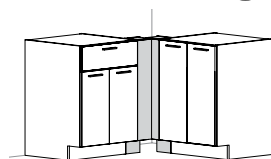


End Gable (RHAEG)

- Used to support one end of countertop
- Available in Source Laminate and Foundation Laminate colors and in Flintwood Stains

Side Filler for Base and Storage Cabinets (RHAFB)

- **Cannot** be aligned with the case, only with the door or drawer
- Non-handed
- Must be cut on site for perfect adjustment with the wall
- **Cannot** be used in corner position
- Fronts are available in Source Laminate and Foundation Laminate colors and in Flintwood Stains

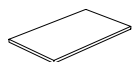


Also available:



Countertop Bracket (RHACTB)

- Used to support one end only or a full countertop
- Overhang **cannot** exceed 12" below countertop
- Should be fixed to wood or metal studs; it is the installers responsibility
- For wood structure, do not exceed 32" center to center; for metal structure, 24" center to center
- Available in Foundation, Accent or Mica colors



Shelf for Cabinet (RHASC)

- Compatible with all Wall, Base and Storage Cabinets, except RHW/C, RHW/CDG, RHBCD, RHBDF, RHBAS and RHBSW
- **Cannot** be used with 48" wide Wall Cabinets
- 1 1/16" thick
- Available in Source Laminate colors only