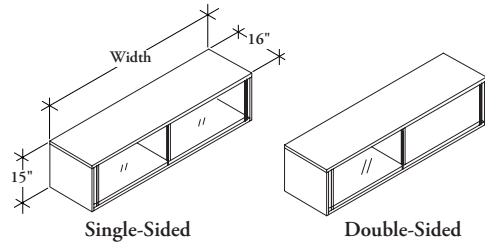


W W G S

Closed Wood Overhead



The Closed Wood Overhead mounts to the center Accessory Beam in a double-sided bench application providing secured overhead storage. It can also mount onto Support Locker (WWGK) to provide storage and privacy in lateral applications.

WHAT'S INCLUDED

1 storage cabinet (single- or double-sided).

NOTES

Please note that Spine Mounted Storage Stanchions (WWGT) or Lateral Mounted Storage Brackets (WWEB) must be specified separately.

If Double-Sided (D) is selected, orientation Left (L) or Right (R) must be chosen. Handedness is determined by the open location from the user's perspective.

PRODUCT OPTIONS

Style	Height	Width (6" increments)	Orientation	Pull Finish	Case, Back & Front Finish	Key Option
S Single-Sided	15	30 - 96	L Left (Shown)	Foundation	Source Laminate	K Key Alike
D Double-Sided			R Right	Mica	Flintwood	R Key Random
			N Not Applicable		Glass	N No Key

SAMPLE ORDER CODE

WWGS S	15	42	N	60	ZA	K
---------------	-----------	-----------	----------	-----------	-----------	----------

DIMENSIONS INCHES / MM

H	W
15 / 381	30 / 762
15 / 381	36 / 914
15 / 381	42 / 1067
15 / 381	48 / 1219
15 / 381	54 / 1372
15 / 381	60 / 1524
15 / 381	66 / 1676
15 / 381	72 / 1829
15 / 381	78 / 1981
15 / 381	84 / 2134
15 / 381	90 / 2286
15 / 381	96 / 2438

PRICING

SINGLE-SIDED (S)

SOURCE LAMINATE CASE

Source Lam. Back & Front	Source Lam. Back, Flintwood Front	Source Lam. Back, Glass Front
1122	1814	1392
1226	1887	1472
1329	2124	1566
1440	2197	1654
1538	2261	1747
1639	2330	1834
1747	2402	1935
1853	2472	2062
1953	2545	2189
2053	2624	2314
2159	2700	2428
n/a	n/a	n/a

Pricing is continued on the following page.

W W G S
Closed Wood Overhead (Continued)

**DIMENSIONS
INCHES / MM**

15 / 381	30 / 762
15 / 381	36 / 914
15 / 381	42 / 1067
15 / 381	48 / 1219
15 / 381	54 / 1372
15 / 381	60 / 1524
15 / 381	66 / 1676
15 / 381	72 / 1829
15 / 381	78 / 1981
15 / 381	84 / 2134
15 / 381	90 / 2286
15 / 381	96 / 2438

15 / 381	30 / 762
15 / 381	36 / 914
15 / 381	42 / 1067
15 / 381	48 / 1219
15 / 381	54 / 1372
15 / 381	60 / 1524
15 / 381	66 / 1676
15 / 381	72 / 1829
15 / 381	78 / 1981
15 / 381	84 / 2134
15 / 381	90 / 2286
15 / 381	96 / 2438

15 / 381	30 / 762
15 / 381	36 / 914
15 / 381	42 / 1067
15 / 381	48 / 1219
15 / 381	54 / 1372
15 / 381	60 / 1524
15 / 381	66 / 1676
15 / 381	72 / 1829
15 / 381	78 / 1981
15 / 381	84 / 2134
15 / 381	90 / 2286
15 / 381	96 / 2438

PRICING

SINGLE-SIDED (S) (Continued)

FLINTWOOD CASE

Flintwood, Back & Front	Flintwood Back, Glass Front
2560	2690
2685	2820
3003	3155
3130	3286
3254	3416
3385	3557
3522	3695
3661	3847
3809	3999
3959	4159
4119	4324
4284	4498

DOUBLE-SIDED (D)

SOURCE LAMINATE CASE

Source Lam. Back & Front	Source Lam. Back, Flintwood Front	Source Lam. Back, Glass Front
1630	2542	2082
1752	2640	2241
1885	2973	2408
2025	3074	2590
2161	3168	2711
2301	3262	2836
2434	3359	2950
2569	3463	3076
2711	3564	3198
2836	3671	3311
2979	3780	3478
n/a	n/a	n/a

FLINTWOOD CASE

Flintwood, Back & Front	Flintwood Back, Glass Front
3587	3767
3763	3947
4206	4416
4384	4599
4558	4787
4741	4975
4928	5176
5127	5384
5331	5599
5546	5823
5769	6056
5997	6295