

# storage & accessories

## WWGP

### Open Wood Overhead

The Open Wood Overhead mounts to the center Accessory Beam in a double-sided bench application providing open overhead storage. It can also mount onto Support Locker (WWGK) to provide storage and privacy in lateral applications.

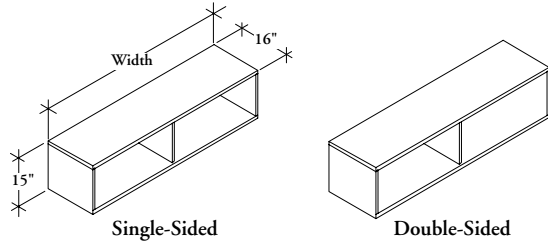
#### WHAT'S INCLUDED

1 storage cabinet (single- or double-sided).

#### NOTES

Please note that Spine Mounted Storage Stanchions (WWGT) or Lateral Mounted Storage Brackets (WWGB) must be specified separately.

If Double-Sided (D) is selected, orientation Left (L) or Right (R) must be chosen. Handedness is determined by the open location from the user's perspective.



#### PRODUCT OPTIONS CONTINUED

Style	Height	Width (6" increments)	Orientation	Case & Back Finish
<b>S</b> Single-Sided	09, 15	30 - 96	<b>L</b> Left (Shown)	Source Laminate
<b>D</b> Double-Sided			<b>R</b> Right	Seamless
			<b>N</b> Not Applicable	Flintwood

#### SAMPLE ORDER CODE

<b>WWGP D</b>	<b>09</b>	<b>42</b>	<b>L</b>	<b>ZA</b>
---------------	-----------	-----------	----------	-----------

#### DIMENSIONS INCHES / MM

H	W
09 / 229	30 / 762
09 / 229	36 / 914
09 / 229	42 / 1067
09 / 229	48 / 1219
09 / 229	54 / 1372
09 / 229	60 / 1524
09 / 229	66 / 1676
09 / 229	72 / 1829
09 / 229	78 / 1981
09 / 229	84 / 2134
09 / 229	90 / 2286
09 / 229	96 / 2438
15 / 381	30 / 762
15 / 381	36 / 914
15 / 381	42 / 1067
15 / 381	48 / 1219
15 / 381	54 / 1372
15 / 381	60 / 1524
15 / 381	66 / 1676
15 / 381	72 / 1829
15 / 381	78 / 1981
15 / 381	84 / 2134
15 / 381	90 / 2286
15 / 381	96 / 2438

#### PRICING

##### SINGLE-SIDED (S)

##### SOURCE LAMINATE CASE

Source Lam. Back
407
444
488
526
569
608
649
690
758
796
837
n/a
452
490
543
586
631
675
720
767
811
852
904
n/a

##### SEAMLESS CASE

Seamless Back	Flintwood Back
972	1165
1022	1226
1078	1292
1131	1358
1190	1425
1247	1498
1311	1571
1375	1651
1512	1814
1589	1905
1667	2002
1751	2102
1081	1316
1134	1385
1196	1459
1258	1534
1319	1610
1386	1690
1456	1775
1528	1863
1680	2049
1763	2151
1853	2260
1945	2374

##### FLINTWOOD CASE

Seamless Back	Flintwood Back
1150	1286
1210	1358
1272	1432
1339	1510
1407	1588
1475	1666
1550	1751
1628	1836
1790	2020
1879	2120
1973	2225
2072	2338
1277	1428
1344	1507
1415	1591
1488	1679
1562	1762
1639	1852
1722	1944
1807	2042
1991	2245
2088	2358
2192	2474
2302	2597

Open Wood Overhead (Continued)

DIMENSIONS  
INCHES / MM

PRICING

DIMENSIONS INCHES / MM		DOUBLE-SIDED (D)				
		SOURCE LAMINATE CASE	SEAMLESS CASE		FLINTWOOD CASE	
H	W	Source Lam. Back	Seamless Back	Flintwood Back	Seamless Back	Flintwood Back
09 / 229	30 / 762	458	1022	1258	1189	1363
09 / 229	36 / 914	487	1078	1324	1253	1440
09 / 229	42 / 1067	519	1131	1393	1322	1520
09 / 229	48 / 1219	551	1193	1466	1395	1605
09 / 229	54 / 1372	593	1277	1569	1493	1715
09 / 229	60 / 1524	636	1365	1680	1598	1836
09 / 229	66 / 1676	681	1462	1797	1710	1967
09 / 229	72 / 1829	723	1563	1924	1831	2104
09 / 229	78 / 1981	765	1671	2054	1958	2250
09 / 229	84 / 2134	804	1789	2200	2096	2407
09 / 229	90 / 2286	852	1915	2356	2242	2577
09 / 229	96 / 2438	n/a	2048	2520	2399	2756
15 / 381	30 / 762	508	1134	1396	1318	1515
15 / 381	36 / 914	542	1196	1470	1392	1598
15 / 381	42 / 1067	576	1258	1545	1468	1688
15 / 381	48 / 1219	612	1324	1630	1552	1782
15 / 381	54 / 1372	660	1418	1744	1660	1906
15 / 381	60 / 1524	707	1518	1867	1776	2042
15 / 381	66 / 1676	755	1625	1998	1900	2183
15 / 381	72 / 1829	803	1736	2137	2033	2337
15 / 381	78 / 1981	850	1858	2285	2175	2501
15 / 381	84 / 2134	893	1988	2444	2326	2675
15 / 381	90 / 2286	947	2126	2615	2489	2862
15 / 381	96 / 2438	n/a	2275	2800	2663	3061