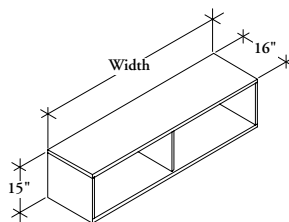


## W W G N

### Open Wood End Mounted Storage Cabinet



The Open Wood End Mounted Storage Cabinet mounts to the end of a double-sided frame to provide shared storage on a benching application. It can be mounted above or below the worksurface.

#### WHAT'S INCLUDED

1 storage cabinet and mounting brackets (as specified).

#### NOTES

Above Worksurface (A) style can be mounted inwards if desired.

No additional brackets need to be ordered.

#### PRODUCT OPTIONS CONTINUED

Style	Height	Width	Case, Back & Front Finish	Bracket Finish
<b>B</b> Below Flush	14	48, 60, 72	Source Laminate	Foundation
<b>W</b> Below Worksurface			Seamless	Mica
<b>A</b> Above Worksurface			Flintwood	Accent

#### SAMPLE ORDER CODE

<b>WWGN A</b>	<b>14</b>	<b>60</b>	<b>ZA</b>	<b>74</b>
---------------	-----------	-----------	-----------	-----------

#### DIMENSIONS INCHES / MM

H	W
14 / 356	48 / 1219
14 / 356	60 / 1524
14 / 356	72 / 1829

#### PRICING

##### SOURCE LAMINATE CASE

Source Lam. Back
586
675
767

##### SEAMLESS CASE

Seamless Back	Flintwood Back
1258	1534
1386	1690
1528	1863

##### FLINTWOOD CASE

Seamless Back	Flintwood Back
1488	1679
1639	1852
1807	2042

For Below Worksurface (W) or Below Flush (B) Style is specified, add 229 for Brackets

For Above Worksurface (A) Style is specified, add 266 for Brackets