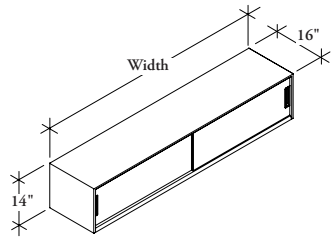


W W G L W

Closed End Mounted Storage Cabinet – Wood Doors



The Closed End Mounted Storage Cabinet – Wood Doors mounts to the end of a double-sided frame to provide shared storage on a benching application. It can be mounted above or below the worksurface.

WHAT'S INCLUDED

1 storage cabinet and mounting brackets (as specified).

NOTES

Whiteboard and tackable back options are only available on the Above Worksurface (A) style.

Style Below Worksurface (W) has visible holes on the top of the cabinet to accommodate a Peninsula Worksurface (WWWRL16) ordered separately.

No additional brackets need to be ordered.

The interior of the cabinet and the bracket will match the case finish.

District Handle Style (D) can only accept Handle Finish All Match Case (C) or All Match Door (D).

PRODUCT OPTIONS

Style	Height	Width	Back Style	Handle Style
B Below Flush W Below Worksurface A Above Worksurface	14	48, 60, 72	M Metal W Whiteboard T Tackable Fabric	D District Handle I Interpret Handle

SAMPLE ORDER CODE

WWGLW B	14	60	M	D
----------------	-----------	-----------	----------	----------

PRODUCT OPTIONS CONTINUED

Case Finish	Secondary Color	Door Finish	Handle Finish	Key Option	Fabric Back Finish
Foundation Mica Accent	Foundation Mica Accent	Source Laminate Flintwood	C All Match Case S Match Secondary Color E Exterior Match Case, Interior Match Secondary Color I Interior Match Case, Exterior Match Secondary Color	K Key Alike R Key Random N No Key	NONE No Fabric Backstyle Panel Fabric

SAMPLE ORDER CODE

74	74	ZA	C	K	NONE
-----------	-----------	-----------	----------	----------	-------------

See pricing on following page.

W W G L W
Closed End Mounted Storage Cabinet – Wood Doors (Continued)

**DIMENSIONS
 INCHES / MM**

PRICING

DIMENSIONS		BELOW FLUSH (B) & BELOW WORKSURFACE (W)					
H	W	Foundation Case, Metal Front	Foundation Case, Source Lam. Front	Foundation Case, Flintwood Front	Mica/Accent Case, Metal Front	Mica/Accent Case, Source Lam. Front	Mica/Accent Case, Flintwood Front
14 / 356	48 / 1219	1419	2253	2420	1462	2296	2463
14 / 356	60 / 1524	1495	2387	2565	1543	2435	2612
14 / 356	72 / 1829	1574	2522	2713	1625	2573	2764
DIMENSIONS		ABOVE WORKSURFACE (A)					
H	W	Foundation Case, Metal Front	Foundation Case, Source Lam. Front	Foundation Case, Flintwood Front	Mica/Accent Case, Metal Front	Mica/Accent Case, Source Lam. Front	Mica/Accent Case, Flintwood Front
14 / 356	48 / 1219	1462	2296	2463	1507	2341	2508
14 / 356	60 / 1524	1540	2433	2610	1588	2480	2658
14 / 356	72 / 1829	1618	2567	2760	1669	2618	2811

If Whiteboard (W) Back is specified, add 77

If Tackable Fabric (T) Back is specified, add;

	COM	Gr. A	Gr. 1	Gr. 2	Gr. 3	Gr. 4	Gr. 5	Gr. 6	Gr. 7
48"	262	269	274	283	288	293	300	305	314
60"	304	313	319	325	329	336	347	354	361
72"	336	346	353	358	369	378	384	392	401