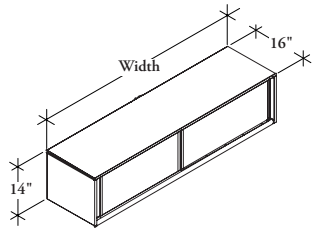


W W G L M

Closed End Mounted Storage Cabinet – Metal Doors



The Closed End Mounted Storage Cabinet – Metal Doors mounts to the end of a double-sided frame to provide shared storage on a benching application. It can be mounted above or below the worksurface.

WHAT'S INCLUDED

1 storage cabinet and mounting brackets (as specified).

NOTES

Whiteboard and tackable back options are only available on the Above Worksurface (A) style.

Style Below Worksurface (W) has visible holes on the top of the cabinet to accommodate a Peninsula Worksurface (WWWRL16) ordered separately.

No additional brackets need to be ordered.

The interior of the cabinet and the bracket will match the case finish.

District Handle Style (D) can only accept Handle Finish All Match Case (C) or All Match Door (D).

PRODUCT OPTIONS

Style	Height	Width	Back Style	Handle Style
B Below Flush W Below Worksurface A Above Worksurface	14	48, 60, 72	M Metal W Whiteboard T Tackable Fabric	D District Handle I Interpret Handle

SAMPLE ORDER CODE

WWGLM B	14	60	M	D
----------------	-----------	-----------	----------	----------

PRODUCT OPTIONS CONTINUED

Case Finish	Door Finish	Handle Finish	Key Option	Fabric Back Finish
Foundation Mica Accent	Foundation Mica Accent	C All Match Case D All Match Door E Exterior Match Case, Interior Match Door I Interior Match Case, Exterior Match Door	K Key Alike R Key Random N No Key	NONE No Fabric Backstyle Panel Fabric

SAMPLE ORDER CODE

74	90	D	K	NONE
-----------	-----------	----------	----------	-------------

See pricing on following page.

W W G L M
Closed End Mounted Storage Cabinet – Metal Doors (Continued)

**DIMENSIONS
 INCHES / MM**

H	W
14 / 356	48 / 1219
14 / 356	60 / 1524
14 / 356	72 / 1829
14 / 356	48 / 1219
14 / 356	60 / 1524
14 / 356	72 / 1829
14 / 356	48 / 1219
14 / 356	60 / 1524
14 / 356	72 / 1829

PRICING

Foundation Mica/Accent

BELOW WORKSURFACE (W)

1994	2053
2112	2176
2231	2300

BELOW FLUSH (B)

1994	2053
2112	2176
2231	2300

ABOVE WORKSURFACE (A)

2038	2098
2156	2221
2275	2344

If Whiteboard (W) Back is specified, add 77

If Tackable Fabric (T) Back is specified, add;

	COM	Gr. A	Gr. 1	Gr. 2	Gr. 3	Gr. 4	Gr. 5	Gr. 6	Gr. 7
48"	262	269	274	283	288	293	300	305	314
60"	304	313	319	325	329	336	347	354	361
72"	336	346	353	358	369	378	384	392	401