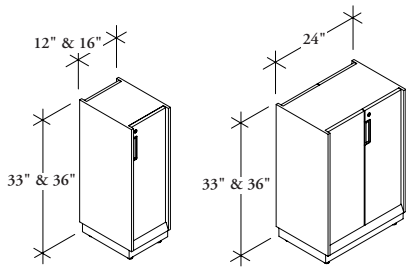


W W G K

Support Locker



The Support Locker is not a standalone unit. It is always ordered with an overhead to provide storage and privacy in lateral applications.

WHAT'S INCLUDED

1 support locker as specified and plinth skirt base.

NOTES

Available with Plinth Skirt Base only.

Support Locker is 16" deep.

33" high Support Lockers are used with 9" high overheads to achieve 42" datum heights (can only be used with open overheads).

36" high Support Lockers are used with 15" high overheads to achieve 51" datum height.

Single-sided style only available for 12" and 16" widths.

Double-sided style only available for 24" widths.

Ensure product is leveled. If front/door alignment is needed, it can be done by either releasing the front mounting screws, adjusting the front/door and tightening the screws, or by using hinge adjustments to ensure an equal gap.

PRODUCT OPTIONS

| Style | Height | Width | Orientation | Case Finish |
|--|--------|------------|---------------------------------|------------------------------|
| S Single-Sided D Double-Sided | 33, 36 | 12, 16, 24 | L Left R Right | Foundation Mica Accent |

SAMPLE ORDER CODE

| | | | | |
|---------------|-----------|-----------|----------|-----------|
| WWGK S | 33 | 16 | L | 74 |
|---------------|-----------|-----------|----------|-----------|

PRODUCT OPTIONS CONTINUED

| Secondary Color | Front Finish | Handle Finish | Bottom Modifier Finish | Key Option |
|------------------------------|---|---|---|---|
| Foundation Mica Accent | CC Match Case SS Match Secondary Color Source Laminate Flintwood | C All Match Case S Match Secondary Color E Exterior Match Case, Interior Match Secondary Color I Interior Match Case, Exterior Match Secondary Color | C Match Case S Match Secondary Color | K Key Alike R Key Random |

SAMPLE ORDER CODE

| | | | | |
|-----------|-----------|----------|----------|----------|
| 74 | 74 | C | C | K |
|-----------|-----------|----------|----------|----------|

See pricing on following page.

W W G K
Support Locker (Continued)

| DIMENSIONS INCHES / MM | | PRICING | |
|---------------------------|----------|------------|-------------|
| H | W | Foundation | Mica/Accent |
| SINGLE-SIDED (S) | | | |
| 33 / 838 | 12 / 305 | 1395 | 1438 |
| 33 / 838 | 16 / 406 | 1429 | 1471 |
| 36 / 914 | 12 / 305 | 1424 | 1469 |
| 36 / 914 | 16 / 406 | 1455 | 1499 |

| DIMENSIONS INCHES / MM | | PRICING | |
|---------------------------|----------|------------|-------------|
| H | W | Foundation | Mica/Accent |
| DOUBLE-SIDED (D) | | | |
| 33 / 838 | 24 / 610 | 1746 | 1797 |
| 36 / 914 | 24 / 610 | 1781 | 1835 |

If Source Laminate for Double-Sided (D) is specified, add 111
 If Source Laminate for Single-Sided (S) is specified, add: 12" 55
 16" 87

If Flintwood Front for Double-Sided (D) is specified, add 710
 If Flintwood Front for Single-Sided (S) is specified, add: 12" 355
 16" 462