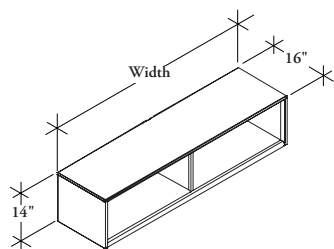


W W G E

Open End Mounted Storage Cabinet



The Open End Mounted Storage Cabinet mounts to the end of a double-sided frame to provide shared storage on a benching application. It can be mounted above or below the worksurface.

WHAT'S INCLUDED

1 storage cabinet and mounting brackets (as specified).

NOTES

Whiteboard and tackable back options are only available on the Above Worksurface (A) style.

If Two-Toned Color is selected, the secondary finish color is on the interior of the cabinet.

Style Below Worksurface (W) has visible holes on the top of the cabinet to accommodate a Peninsula Worksurface (WWWRL16) ordered separately.

No additional brackets need to be ordered. Bracket finish will match the case color.

PRODUCT OPTIONS

Style	Height	Width	Back Style
B Below Flush W Below Worksurface A Above Worksurface	14	48, 60, 72	M Metal W Whiteboard T Tackable Fabric

SAMPLE ORDER CODE

WWGE A	14	60	W
---------------	-----------	-----------	----------

PRODUCT OPTIONS CONTINUED

Case Finish	Two-Toned Color	Interior Finish	Fabric Back Finish
Foundation Mica Accent	N No Y Yes	NA Not Applicable Foundation Mica Accent	NONE No Fabric Backstyle Panel Fabric

SAMPLE ORDER CODE

74	N	NA	NONE
-----------	----------	-----------	-------------

See pricing on following page.

W W G E
Open End Mounted Storage Cabinet
(Continued)

DIMENSIONS
INCHES / MM

H	W
14 / 356	48 / 1219
14 / 356	60 / 1524
14 / 356	72 / 1829
14 / 356	48 / 1219
14 / 356	60 / 1524
14 / 356	72 / 1829
14 / 356	48 / 1219
14 / 356	60 / 1524
14 / 356	72 / 1829

PRICING

Foundation Mica/Accent

BELOW WORKSURFACE (W)

1419	1462
1495	1543
1574	1625

BELOW FLUSH (B)

1419	1462
1495	1543
1574	1625

ABOVE WORKSURFACE (A)

1462	1507
1540	1588
1618	1669

If Whiteboard (W) Back is specified, add 77

If Tackable Fabric (T) Back is specified, add;

	COM	Gr. A	Gr. 1	Gr. 2	Gr. 3	Gr. 4	Gr. 5	Gr. 6	Gr. 7
48"	262	269	274	283	288	293	300	305	314
60"	304	313	319	325	329	336	347	354	361
72"	336	346	353	358	369	378	384	392	401