

The Closed Wood End Mounted Storage Cabinet mounts to the end of a double-sided frame to provide shared storage on a benching application. It can be mounted above or below the worksurface.

WHAT'S INCLUDED

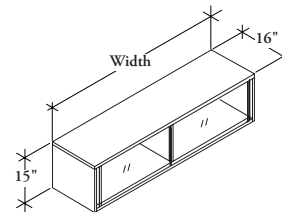
1 storage cabinet and mounting brackets (as specified).

NOTES

Above worksurface style can be mounted inwards if desired.

No additional brackets need to be ordered.

W W G D
Closed Wood End Mounted Cabinet



PRODUCT OPTIONS

Style	Height	Width	Pull Finish	Case, Back & Front Finish	Bracket Finish	Key Option
B Below Flush	14	48, 60, 72	Foundation	Source Laminate	Foundation	K Key Alike
W Below Worksurface			Mica	Flintwood	Mica	R Key Random
A Above Worksurface			Glass	Accent	N No Key	

SAMPLE ORDER CODE

WWGD A	14	60	60	ZA	74	K
---------------	-----------	-----------	-----------	-----------	-----------	----------

**DIMENSIONS
INCHES / MM**

H	W
14 / 356	48 / 1219
14 / 356	60 / 1524
14 / 356	72 / 1829

PRICING

SOURCE LAMINATE CASE

Source Lam. Back & Front	Source Lam. Back, Flintwood Front	Source Lam. Back, Glass Front
1440	2197	1654
1639	2330	1834
1853	2472	2062

FLINTWOOD CASE

Flintwood, Back & Front	Flintwood Back, Glass Front
3130	3286
3385	3557
3661	3847

For Below Worksurface (W) or Below Flush (B) Style is specified, add 274 for Brackets

For Above Worksurface (A) Style is specified, add 321 for Brackets