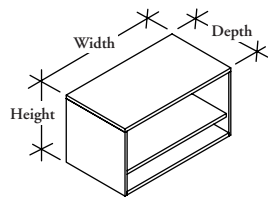


# ledger plus – cabinets

## PLACW

### Add-On Storage Cabinet - Wood



The Add-on Storage Cabinet - Wood is an open cabinet that sits atop Drawer, Storage, Combo Cabinets and Semi-Supported Worksurfaces.

#### WHAT'S INCLUDED

1 case, 1 shelf ( for Add-Ons taller than 19"), mounting hardware.

#### NOTES

Not all combinations of Application, Datum and Supporting Storage heights are available (please refer to the *Application Guide* for more details).

#### PRODUCT OPTIONS

Application	Datum Height	Supporting Cabinet Height	Depth	Width	Case Finish
A Above Worksurface	27, 35, 40, 48	18, 21, 27, 35, 40	18, 20	24, 30, 36, 42	Source Laminate Seamless Flintwood
B Below Worksurface					
C On top of storage					

208

#### SAMPLE ORDER CODE

PLACW A	48	27	18	30	ZA
---------	----	----	----	----	----

#### DIMENSIONS INCHES / MM

D	W
18 / 457	24 / 610
18 / 457	30 / 762
18 / 457	36 / 914
18 / 457	42 / 1067
21 / 536	25 / 644
20 / 508	30 / 762
20 / 508	36 / 914
20 / 508	42 / 1067

18 / 457	24 / 610
18 / 457	30 / 762
18 / 457	36 / 914
18 / 457	42 / 1067
20 / 508	24 / 610
20 / 508	30 / 762
20 / 508	36 / 914
20 / 508	42 / 1067

#### PRICING

##### ABOVE WORKSURFACE

40" Datum height,  
27" Supporting Cabinet height

Source Laminate	Seamless	Flintwood
461	993	1319
512	1100	1464
569	1223	1625
644	1383	1841

484	1040	1384
541	1165	1549
621	1335	1776
678	1458	1938

48" Datum height,  
27" Supporting Cabinet height

Source Laminate	Seamless	Flintwood
663	1424	1895
738	1587	2111
817	1759	2339
901	1936	2573

696	1497	1992
778	1673	2225
864	1858	2469
950	2045	2719

48" Datum height,  
35" Supporting Cabinet height

Source Laminate	Seamless	Flintwood
461	993	1319
512	1100	1464
569	1223	1625
644	1383	1841

484	1040	1384
541	1165	1549
621	1335	1776
678	1458	1938

Pricing is continued on the following page.

Storage Cabinets - Standard  
(Continued)

DIMENSIONS  
INCHES / MM

PRICING

D	W
18 / 457	24 / 610
18 / 457	30 / 762
18 / 457	36 / 914
18 / 457	42 / 1067
20 / 508	24 / 610
20 / 508	30 / 762
20 / 508	36 / 914
20 / 508	42 / 1067

**BELOW WORKSURFACE**

27" Datum height,  
18" Supporting Cabinet height

Source Laminate	Seamless	Flintwood
463	996	1323
511	1100	1463
567	1217	1619
617	1329	1767
484	1040	1384
537	1155	1536
595	1281	1704
650	1399	1862

18 / 457	24 / 610
18 / 457	30 / 762
18 / 457	36 / 914
18 / 457	42 / 1067
20 / 508	24 / 610
20 / 508	30 / 762
20 / 508	36 / 914
20 / 508	42 / 1067

35" Datum height,  
18" Supporting Cabinet height

Source Laminate	Seamless	Flintwood
535	1150	1530
593	1274	1696
650	1399	1862
709	1523	2027
563	1213	1613
622	1339	1780
684	1472	1957
745	1603	2132

35" Datum height,  
21" Supporting Cabinet height

Source Laminate	Seamless	Flintwood
505	1088	1445
561	1207	1605
616	1325	1764
672	1444	1920
530	1139	1515
590	1267	1685
648	1394	1853
708	1521	2023

35" Datum height,  
27" Supporting Cabinet height

Source Laminate	Seamless	Flintwood
446	961	1278
495	1063	1414
544	1171	1558
598	1287	1710
467	1005	1337
520	1116	1484
576	1239	1648
631	1356	1803

18 / 457	24 / 610
18 / 457	30 / 762
18 / 457	36 / 914
18 / 457	42 / 1067
20 / 508	24 / 610
20 / 508	30 / 762
20 / 508	36 / 914
20 / 508	42 / 1067

40" Datum height,  
18" Supporting Cabinet height

Source Laminate	Seamless	Flintwood
687	1476	1964
766	1645	2187
846	1819	2421
932	2001	2661
722	1552	2065
806	1733	2304
895	1920	2554
981	2113	2811

40" Datum height,  
21" Supporting Cabinet height

Source Laminate	Seamless	Flintwood
657	1413	1879
734	1576	2096
812	1746	2323
895	1923	2555
691	1485	1975
772	1661	2208
859	1843	2452
944	2031	2702

40" Datum height,  
27" Supporting Cabinet height

Source Laminate	Seamless	Flintwood
493	1059	1407
543	1168	1555
601	1291	1716
655	1407	1872
516	1107	1474
574	1234	1642
632	1359	1806
689	1481	1971

Pricing is continued on the following page.

# ledger plus – cabinets

## PLACW

### Storage Cabinets - Standard (Continued)

#### DIMENSIONS INCHES / MM

#### PRICING

DIMENSIONS		ON TOP OF STORAGE									
D	W	40" Datum height, 18" Supporting Cabinet height			40" Datum height, 21" Supporting Cabinet height			40" Datum height, 27" Supporting Cabinet height			
		Source Laminate	Seamless	Flintwood	Source Laminate	Seamless	Flintwood	Source Laminate	Seamless	Flintwood	
18 / 457	24 / 610	690	1484	1973	769	1651	2197	737	1584	2105	
18 / 457	30 / 762	769	1651	2197	849	1829	2432	816	1754	2334	
18 / 457	36 / 914	849	1829	2432	935	2008	2672	898	1931	2566	
18 / 457	42 / 1067	935	2008	2672	725	1559	2073	693	1493	1984	
20 / 508	24 / 610	725	1559	2073	808	1740	2313	775	1667	2217	
20 / 508	30 / 762	808	1740	2313	897	1929	2563	862	1849	2460	
20 / 508	36 / 914	897	1929	2563	987	2119	2818	946	2037	2710	
20 / 508	42 / 1067	690	1484	1973	660	1422	1891	496	1066	1417	
		48" Datum height, 18" Supporting Cabinet height			48" Datum height, 21" Supporting Cabinet height			48" Datum height, 27" Supporting Cabinet height			
		Source Laminate	Seamless	Flintwood	Source Laminate	Seamless	Flintwood	Source Laminate	Seamless	Flintwood	
18 / 457	24 / 610	761	1443	2166	734	1394	2090	674	1281	1923	
18 / 457	30 / 762	844	1604	2406	814	1549	2321	750	1427	2141	
18 / 457	36 / 914	933	1771	2655	901	1711	2566	832	1580	2371	
18 / 457	42 / 1067	1023	1942	2913	990	1877	2815	914	1739	2607	
20 / 508	24 / 610	800	1518	2278	771	1463	2195	709	1345	2019	
20 / 508	30 / 762	890	1689	2532	859	1629	2444	791	1503	2253	
20 / 508	36 / 914	981	1867	2801	947	1804	2705	877	1667	2499	
20 / 508	42 / 1067	1078	2048	3072	1041	1979	2971	965	1835	2750	
		48" Datum height, 35" Supporting Cabinet height			48" Datum height, 40" Supporting Cabinet height						
		Source Laminate	Seamless	Flintwood	Source Laminate	Seamless	Flintwood				
18 / 457	24 / 610	496	1066	1417	449	968	1288				
18 / 457	30 / 762	548	1176	1564	498	1070	1424				
18 / 457	36 / 914	605	1300	1728	549	1179	1568				
18 / 457	42 / 1067	658	1415	1881	601	1293	1720				
20 / 508	24 / 610	519	1115	1483	471	1011	1346				
20 / 508	30 / 762	576	1240	1649	522	1124	1493				
20 / 508	36 / 914	634	1364	1814	579	1246	1656				
20 / 508	42 / 1067	692	1489	1978	634	1362	1810				

210