

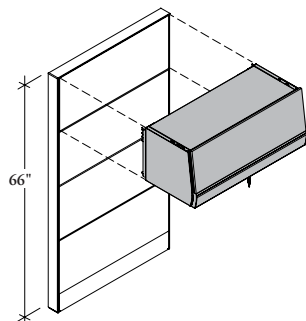
overhead storage

MOUNTING APPLICABILITY	101
UNIVERSAL OVERHEAD BASICS	102
UNIVERSAL OVERHEAD APPLICATIONS.	103
UNIVERSAL UPMOUNT OVERHEAD APPLICATIONS	103
LEDGER FLUSH FRONT OVERHEAD CABINET BASICS.	104
LEDGER FLUSH FRONT OVERHEAD CABINET APPLICATIONS. . .	104
LEDGER FULL PULL OVERHEAD CABINET BASICS	105
LEDGER FULL PULL OVERHEAD CABINET APPLICATIONS	106
SLIDING DOOR STORAGE CABINET BASICS.	107
SLIDING DOOR STORAGE CABINET APPLICATIONS	108
UPMOUNT SLIDING DOOR STORAGE CABINET APPLICATIONS. . .	108
ALMANAC OVERHEAD CABINET BASICS	109
ALMANAC OVERHEAD CABINET APPLICATIONS.	109
STANDARD OVERHEAD CABINET BASICS.	110
UPMOUNT OVERHEAD CABINET APPLICATIONS	110
STANDARD OVERHEAD CABINET APPLICATIONS.	111
ALTOS APPLICATIONS	112

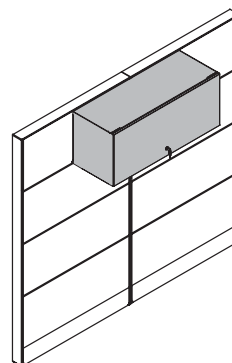
mounting applicability

A variety of overhead storage options are available for mounting on- or off-module to Teknion's panel and wall systems. The chart below summarizes the options. See the following pages for detailed descriptions.

storage cabinet	lyft	t/o/s	leverage	altos	district
LUSF Universal Overhead	n/a	On-Module and Off-Module	On-Module	On-Module	On-Module
LUSU Universal Upmount	n/a	On-Module and Off-Module	On-Module	n/a	n/a
LSF Ledger Flush Front	n/a	On-Module and Off-Module	On-Module	On-Module	On-Module
SSF Ledger Full Pull	n/a	On-Module and Off-Module	On-Module	On-Module	On-Module
SSFM Ledger Full Pull A4	n/a	On-Module and Off-Module	On-Module	On-Module	n/a
LMSU Upmount Sliding Door Storage Cabinet	n/a	On-Module and Off-Module	On-Module	n/a	n/a
LSSF Almanac	n/a	On-Module and Off-Module	On-Module	On-Module	Off-Module
LCSF Standard	On-Module	On-Module	On-Module and Off-Module	On-Module	n/a
LCSU Standard Upmount	n/a	On-Module	On-Module	n/a	n/a



The width of On-Module Overhead Cabinets must be equal to the width of the panel from which it is being suspended



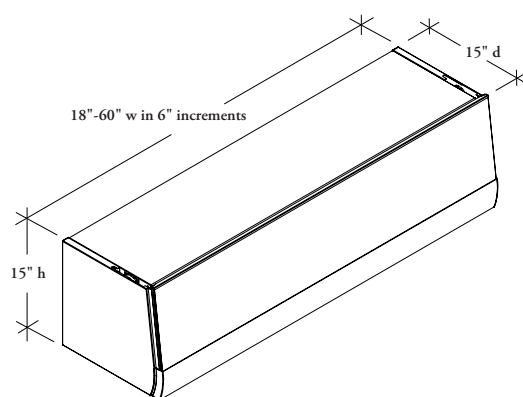
Overhead Cabinet with off-module mounting cannot be mounted within 1 1/2" of the end of a panel or at a panel-to-panel connector.

universal overhead basics

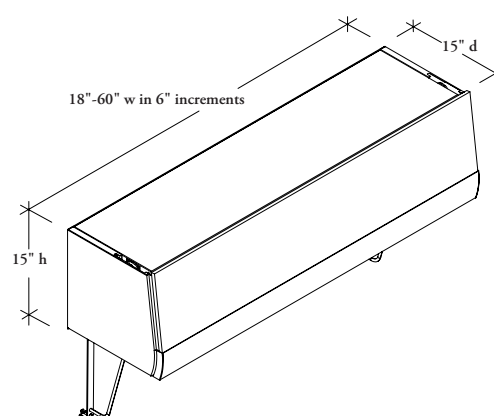
The Universal Overhead Cabinet mounts to Altos and all Panel Systems. The Universal Upmount Overhead Cabinet mounts to all Post and Beam and Panel Systems.

- Can be mounted on- or off-module depending on the system
- Equipped with an assisted opening mechanism. The door retracts outside/over the Overhead Cabinet
- Locks can be keyed alike to match other lockable storage components or keyed random to provide a dedicated lock

Universal Overhead Cabinet (LUSF)

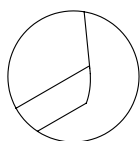


Universal Upmount Overhead Cabinet (LUSU)



Finishes

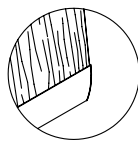
- Offered with seven front finish styles
- Case is available in Satin, Satin Mica, Textured and Textured Mica colors
- Metal fronts are available in Satin, Satin Mica, Textured and Textured Mica colors
- Laminated fronts are available in Foundation Laminated colors
- Flintwood fronts are available in a selection of Flintwood stains
- Flintwood and Laminate doors are not available in 54" and 60" widths



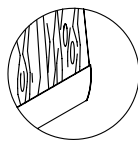
Metal Front



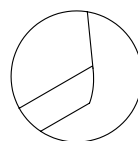
Whiteboard Front



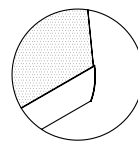
Standard Flintwood Front



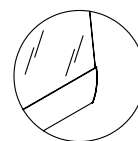
Cathedral Flintwood Front



Laminated Front



Fully Perforated Front

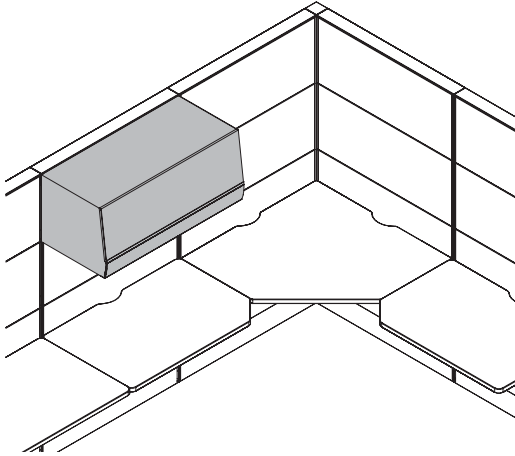


Translucent Front

universal overhead applications

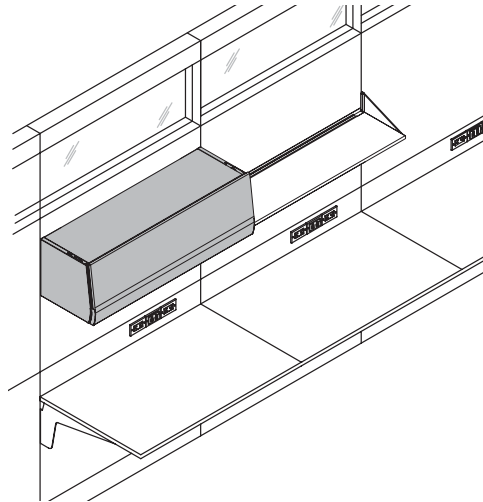
Universal Overhead Cabinets can be used on- or off-module in the following applications.

on-module



Leverage On-Module (shown)

- The 18" cabinet is not compatible with Leverage Panels
- T/O/S On and Off-Module available



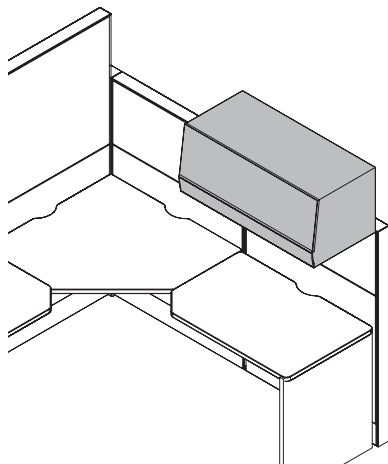
Altos On-Module

- The overhead is suspended by two brackets that hook into the Vertical Post Packages, so all applications must be on-module and span the width of the wall module
- The 18" wide cabinet is not compatible with Altos walls

universal upmount overhead applications

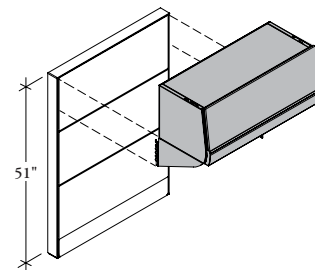
Universal Upmount Overhead Cabinets can be used on- or off-module in the following applications.

on-module



Leverage On-Module (shown)

- The 18" cabinet is not compatible with Leverage Panels
- T/O/S On and Off-Module available



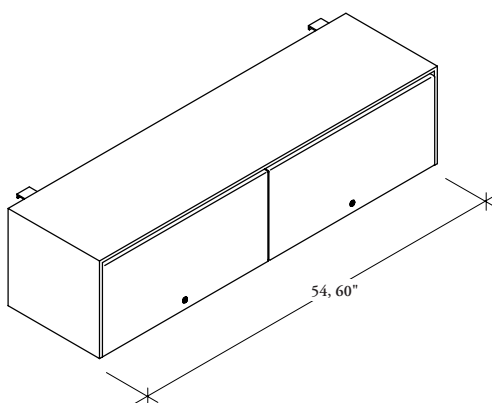
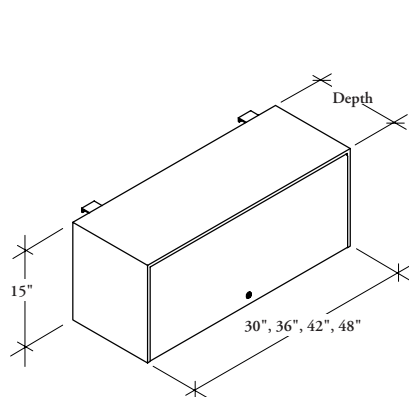
The width of the on-module overhead cabinet must be equal to the width of the panel from which it is suspended

ledger flush front overhead cabinet basics

The Ledger Flush Front Overhead Cabinet is a lockable storage unit with flush fronts that mounts to Altos and panel systems.

- Can be mounted on- or off-module depending on the system
- Locks can be keyed alike to match other lockable storage components or keyed random to provide a dedicated lock
- The door retracts inside/within the overhead cabinet

Ledger Flush Front Overhead Cabinet (LSF)



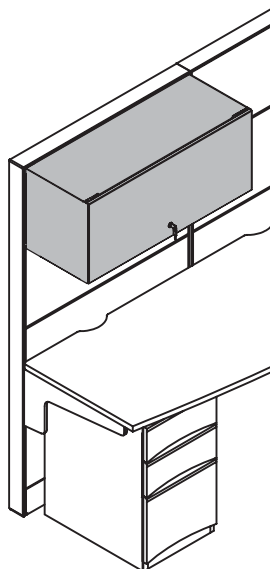
Finishes

- Case and metal fronts are available in a selection of Satin, Satin Mica, Textured and Textured Mica colors
- Flintwood fronts are available in a selection of Flintwood stains

ledger flush front overhead cabinet applications

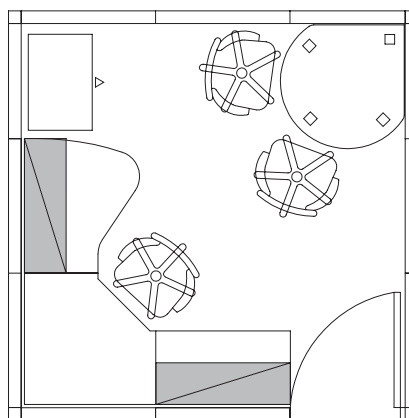
The Ledger Flush Front Overhead Cabinet can be used on- or off-module in the following applications.

on-module



Leverage On-Module (shown)

- District On-Module available
- T/O/S On and Off-Module available.
- T/O/S Off-Module **cannot** be installed on a 30" high element



Altos On-Module

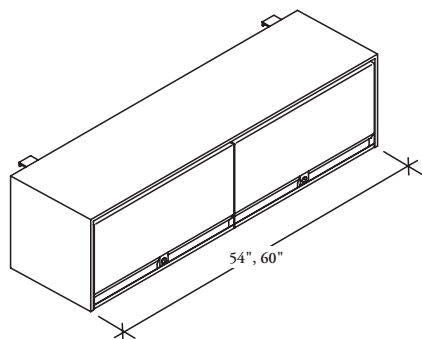
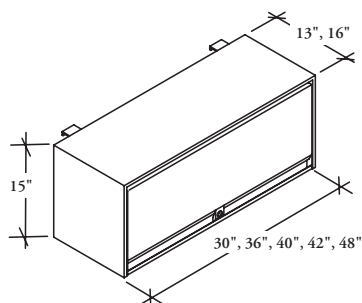
The overhead is suspended by two brackets that hook into the Vertical Post Packages, so all applications must be on-module and span the width of the wall module

ledger full pull overhead cabinet basics

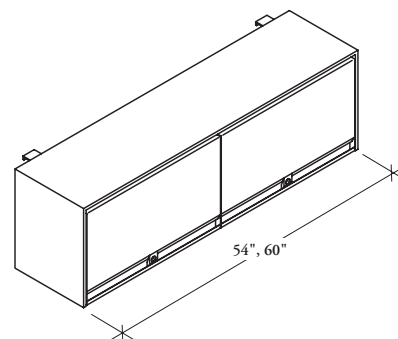
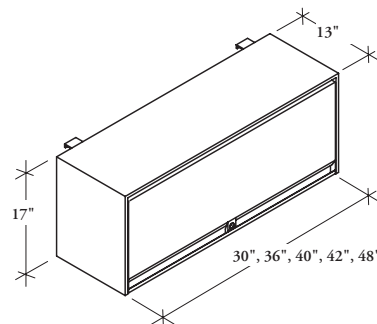
The Ledger Full Pull Overhead Cabinet is a lockable storage unit that mounts to Altos and panel systems.

- The A4 Cabinet is a metric-height unit
- Cabinets 54" and 60" wide have two doors, all other cabinets have one door
- Locks can be keyed alike to match other lockable storage components or keyed random to provide a dedicated lock
- The door retracts inside/within the overhead cabinet

Ledger Full Pull Overhead Cabinets (SSF)



Ledger Full Pull A4 Overhead Cabinets (SSFM)



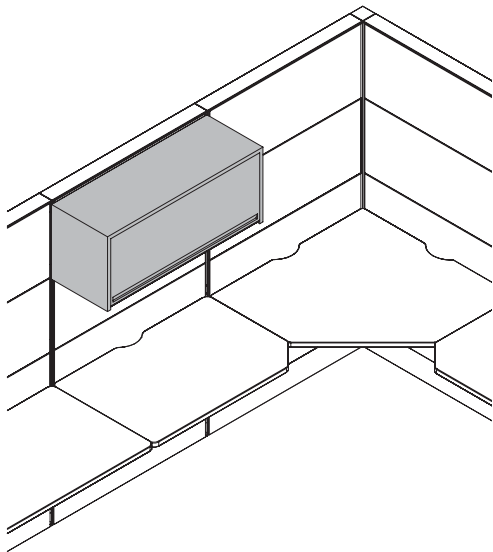
Finishes

- Case and metal fronts are available in Foundation, Mica colors and Accent

ledger full pull overhead cabinet applications

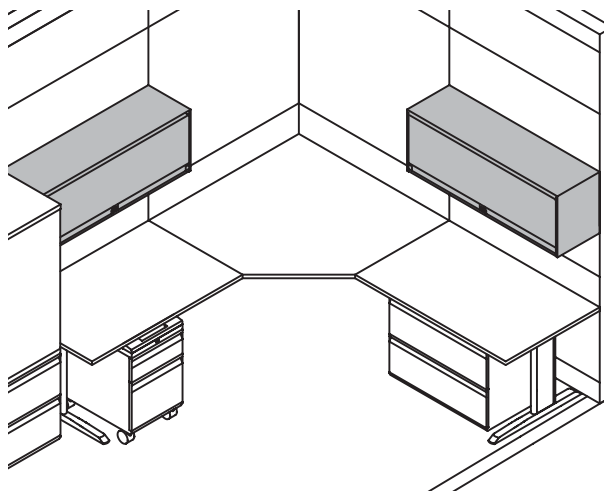
The Ledger Full Pull Overhead Cabinet can be used on- or off-module in the following applications.

on-module



Leverage On-Module (shown)

- District On-Module available



T/O/S On-Module

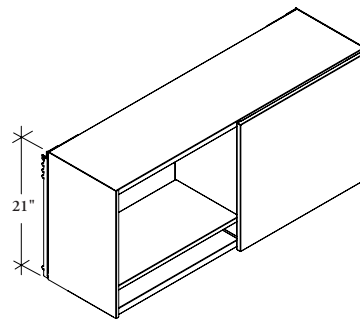
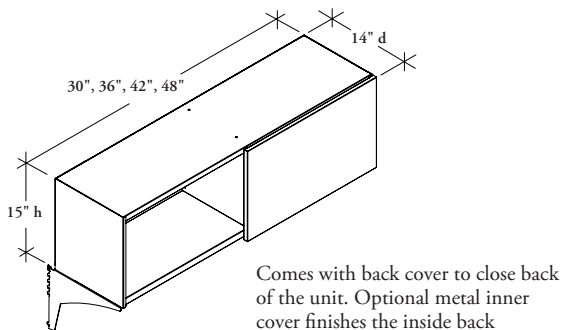
- T/O/S Off-Module available.
- T/O/S Off-Module **cannot** be installed on a 30" high element

sliding door storage cabinet basics

The Sliding Door Storage Cabinet mounts to Leverage, T/O/S, District and Altos. The Upmount Sliding Door Storage Cabinet mounts to Leverage and T/O/S.

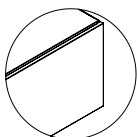
- Can be mounted on- or off-module depending on the system
- Comes with a center dividing gable and sliding door
- Locks can be keyed alike to match other lockable storage components or keyed random to provide a dedicated lock
- Lock is located on the underside of the cabinet
- Fits metric and imperial binders
- There is no handle so the unit is non-handed
- Inner covers are specified separate

Upmount Sliding Door Storage Cabinet (LMSU)

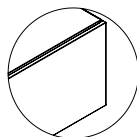


Finishes

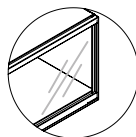
- Offered with seven front finish styles
- Case metal fronts and inner covers are available in Satin, Satin Mica, Textured and Textured Mica colors
- Laminate fronts are available in a selection of grade 1 and 2 colors
- Glass front is frosted
- Wood fronts are available in Flintwood and Natural Veneer



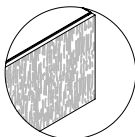
Metal
(Paint)



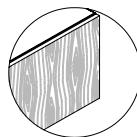
Fascia
Laminate



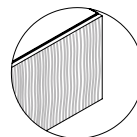
Glass



Standard
Flintwood



Cathedral
Flintwood

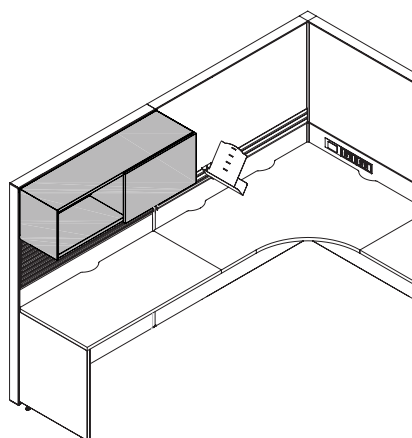


Natural
Veneer

sliding door storage cabinet applications

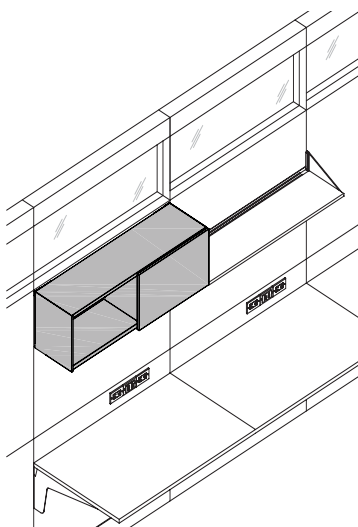
Sliding Door Storage Overhead Cabinets can be used on- or off-module in the following applications.

on-module



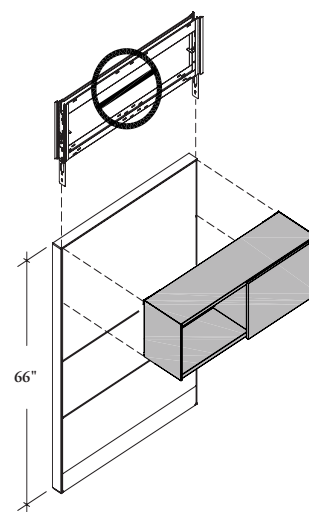
Leverage on-module (shown)

- District On-Module available
- T/O/S On and Off-Module available.
- T/O/S Off-Module, cabinet **cannot** span across two panels



Altos on-module

The overhead is suspended by two brackets that hook into the Vertical Post Packages, so all applications must be on-module and span the width of the wall module



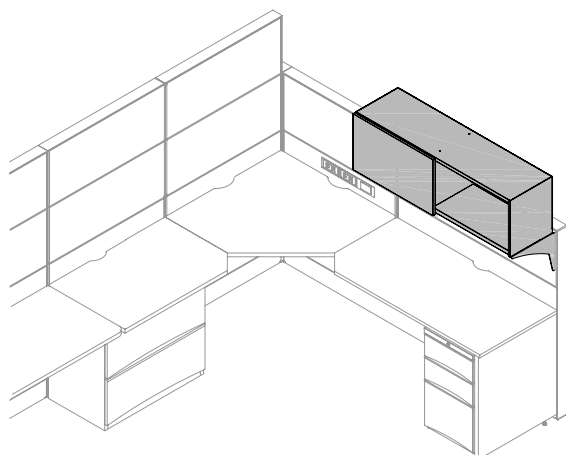
- An on-module cabinet can be mounted onto a 30" high element because the brackets mount over the top of the panel
- An on-module overhead can be mounted onto an add-on module but an additional add-on **cannot** be mounted above it
- The cabinet must mount from the top

upmount sliding door storage cabinet applications

Upmount Sliding Door Storage Cabinets can be used on- or off-module in the following applications.

on-module

Upmount Sliding Door Storage Cabinet (LMSU)



Leverage On-Module (shown)

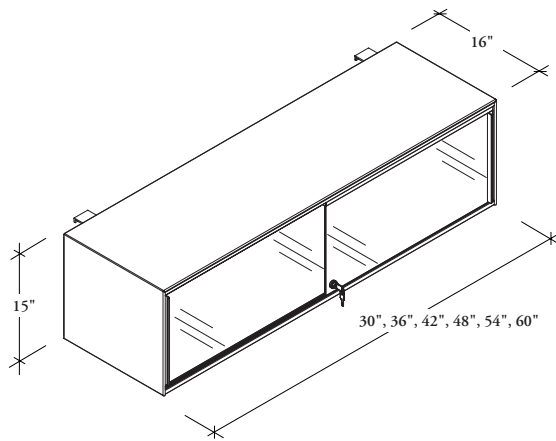
- T/O/S on- and off-module available
- The width of the on-module overhead cabinet must be equal to the width of the panel from which it is suspended

almanac overhead cabinet basics

The Almanac Overhead cabinet is a lockable storage unit, with sliding doors that mounts to Altos and panel systems.

- Provides an efficient method of placing frequently used items within arms reach
- Can be mounted on- or off-module depending on the system
- Locks can be keyed alike to match other lockable storage components or keyed random to provide a dedicated lock

Almanac Overhead Cabinet (LSSF)



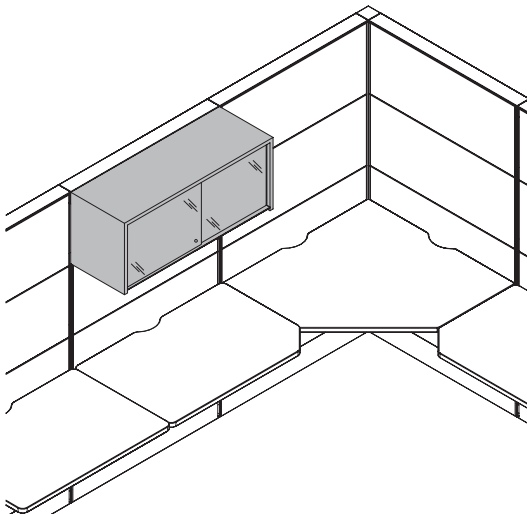
Finishes

- Available with metal, Flintwood, Glass and Translucent front finish styles
- Case and metal fronts are available in Satin, Satin Mica, Textured and Textured Mica colors
- Flintwood fronts are available in a selection of Flintwood stains
- Glass and Translucent fronts will have a frosted finish

almanac overhead cabinet applications

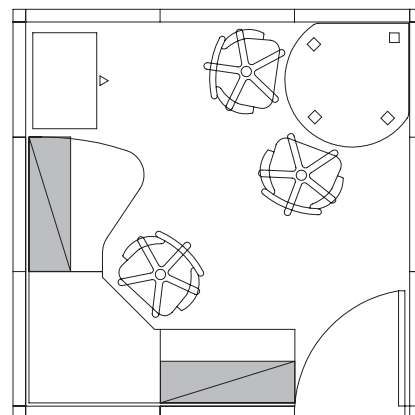
The Almanac Overhead cabinet can be used on- or off-module in the following applications.

on-module



Leverage On-Module (shown)

- T/O/S On and Off-Module available.
- T/O/S Off-Module **cannot** be installed on a 30" high element



Altos On-Module

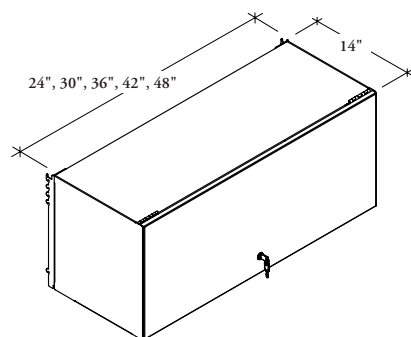
The overhead is suspended by two brackets that hook into the Vertical Post Packages, so all applications must be on-module and span the width of the wall module

standard overhead cabinet basics

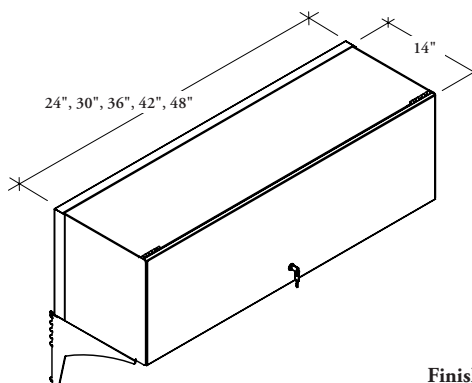
Standard Overhead Cabinets are lockable, on- or off-module storage units that mount to Altos, Lyft and panel systems.

- Standard storage is available with a lockable option
- The door retracts outside/over the cabinet
- **Cannot** accommodate Book Organizer (TBKGS)

Standard Overhead Cabinet (LCSF)



Standard Overhead Upmount Cabinet (LCSU)



Finishes

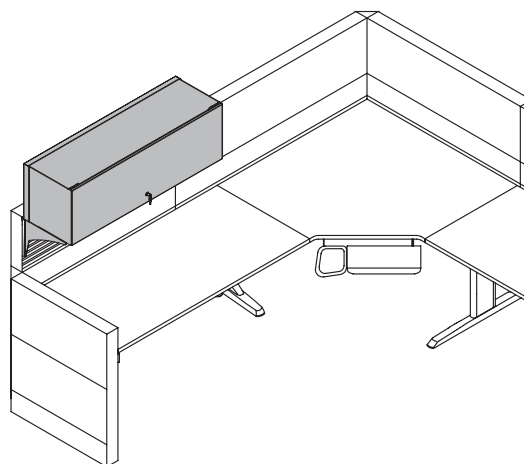
Case and front finishes are available in Ebony

upmount overhead cabinet applications

Upmount Overhead Cabinets are panel-mounted, lockable, on-module storage units.

on-module

Upmount Overhead Cabinet (LCSU)



T/O/S On-Module (shown)

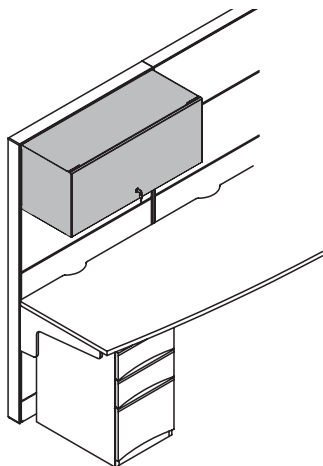
- Leverage on-module available
- Can be mounted on-module only

standard overhead cabinet applications

Standard Overhead Cabinets are panel-mounted, lockable, on- or off-module storage units.

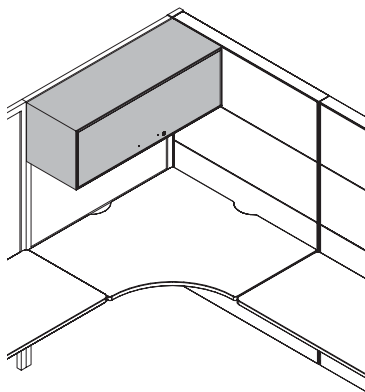
on-module

Standard Overhead Cabinet (LCSF)

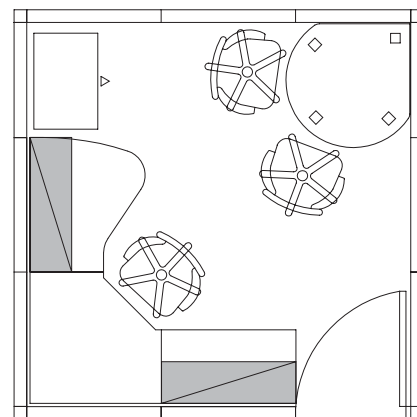


Leverage On-Module (shown)

T/O/S on-module available



Lyft On-Module

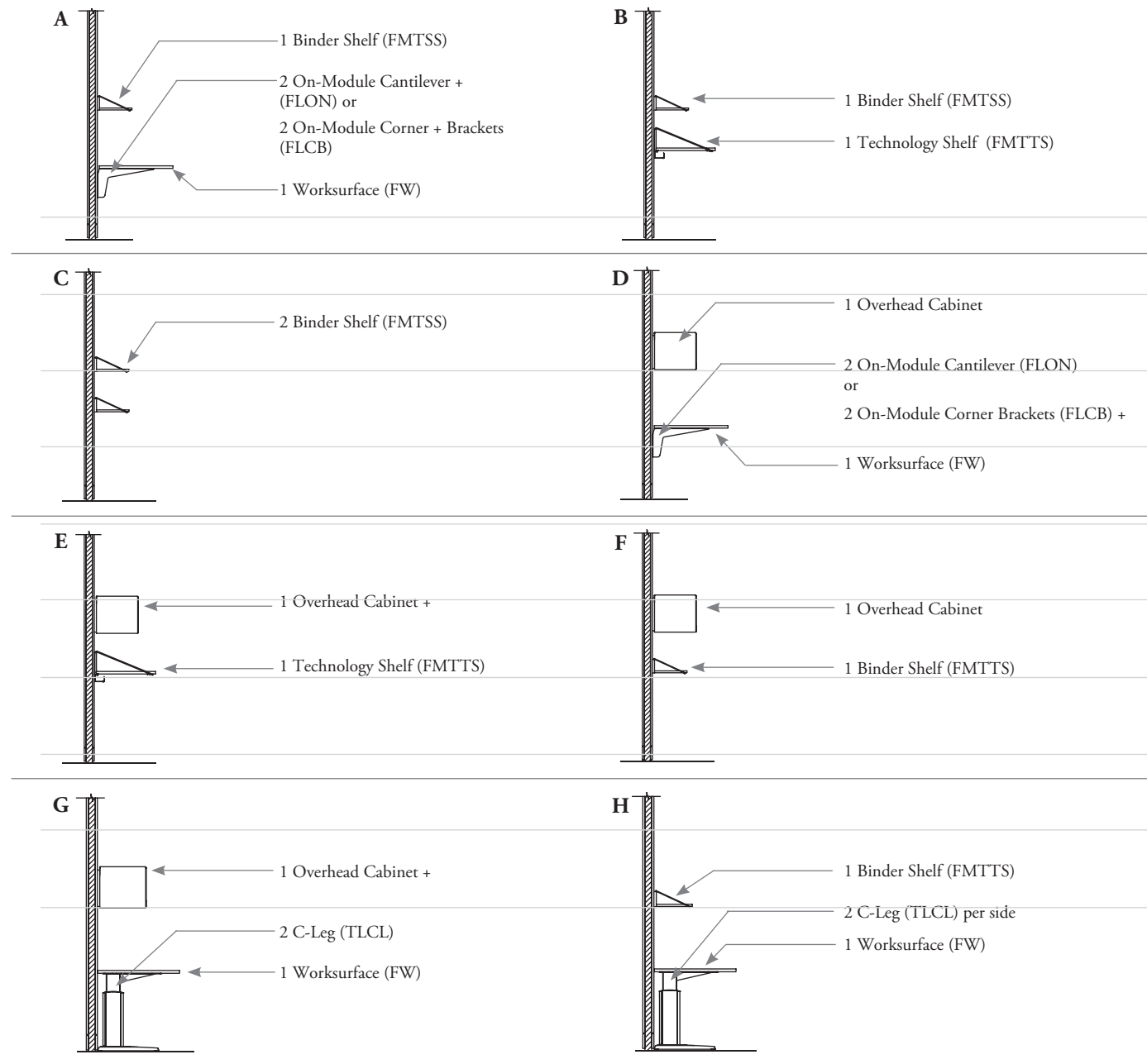


Altos On-Module

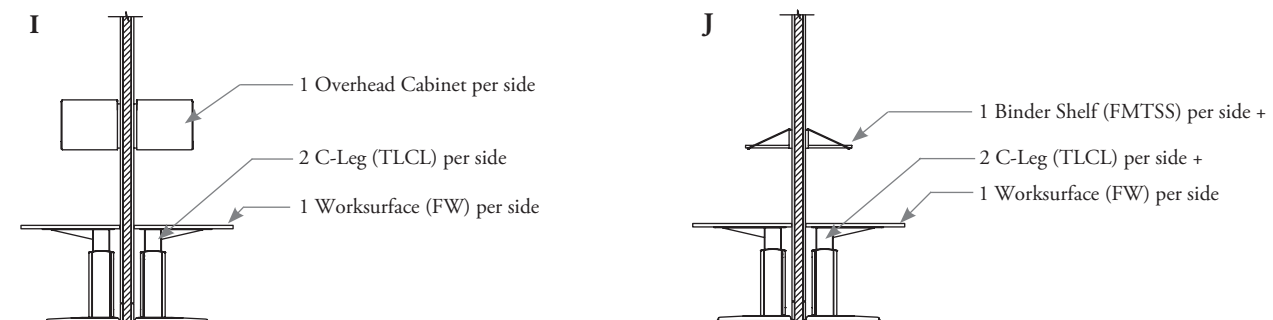
The overhead is suspended by two brackets that hook into the Vertical Post Packages, so all applications must be on-module and span the width of the wall module

altos applications

single-sided applications per wall module



double-sided applications per wall module



altos applications (continued)

The chart below shows the maximum possible combinations of the mounted storage configurations on the previous pages.

All combinations are based on a maximum wall run of 16'-0" wide and four (48" wide each) wall modules. For example, if combining configuration A with configuration G, a maximum of three wall modules may be mounted in any combination with configuration A, G and G.

Configuration	Configuration									
	A	B	C	D	E	F	G	H	I	J
A	A,A*	A,B*	A,C*	A,D	A,E	A,F	A,G,G	A,H,H,H	A,I	A,J*
B	B,A*	B,B*	B,C*	B,D	B,E	B,F*	B,G,G	B,H,H,H B,B,H	n/a	B,J*
C	C,A*	C,B*	C,C,C	C,D	C,E*	C,F*	C,G,G C,C,G	C,H,H,H C,C,H,H	C,I	C,J,J C,C,J
D	D,A	D,B	D,C	D,D	n/a	D,F	D,G*	D,H,H	n/a	D,J
E	E,A	E,B	E,C*	n/a	E,E	E,F	E,G*	E,H,H,H	n/a	E,J*
F	F,A	F,B*	F,C*	F,D	F,E	F,F	F,G,G	F,H,H,H	F,I	F,J*
G	G,G,A	G,G,B	G,G,C G,C,C	G,D*	G,E*	G,G,F	G,G,G*	G,G,H,H/ G,H,H,H/ G,G,G,H	G,I*	G,G,J G,J,J
H	H,H,H,A	H,H,H,B H,B,B	H,H,H,C H,H,C,C	H,H,D	H,H,H,E	H,H,H,F	H,G,G,G/ H,H,G,G/ H,H,H,G	H,H,H,H	H,H,I	H,H,J,J H,H,H,J
I	I,A	n/a	I,C	n/a	n/a	I,F	I,G*	I,H,H	I,I	I,J
J	J,A*	J,B*	J,J,C J,C,C	J,D	J,E*	J,F*	J,G,G J,J,G	J,J,H,H J,H,H,H	J,I	J,J,J

* Combination may accept an additional scenario H on a 16'-0" wall run.