

overhead storage

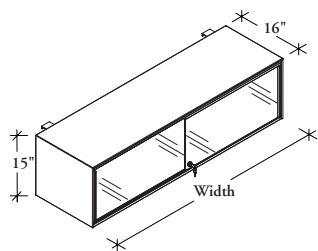
L S S F

Almanac Overhead Cabinet

The Almanac Overhead Cabinet, is a panel mounted, lockable storage unit. It's sliding doors align with Almanac storage and can be used with Altos and all panel and wall systems.

WHAT'S INCLUDED

1 cabinet, 2 doors, mounting hardware, as specified, lock and keys.



PRODUCT OPTIONS

Depth	Width	Front Finish Style	Case and Metal Front Finish	Flintwood Front Finish	Mounting Hardware Option	Key Style
16	30, 36, 42, 48, 54, 60	D1 Metal Front D3 Flintwood Front D7 Glass D9 Translucent Front	Foundation Mica Accent	Flintwood	1 T/O/S Off-Module 2 Altos On-Module 3 Leverage On-Module 4 T/O/S On-Module 5 District On-Module	K Keyed Alike R Keyed Randomly

272

SAMPLE ORDER CODE

LSSF 16	36	D7	74		1	R
---------	----	----	----	--	---	---

DIMENSIONS INCHES / MM

D	W
16 / 406	30 / 762
16 / 406	36 / 914
16 / 406	42 / 1067
16 / 406	48 / 1219
16 / 406	54 / 1372
16 / 406	60 / 1524

PRICING

Metal Fronts	Translucent Fronts	Glass Fronts	Flintwood Fronts
967	1119	1394	1431
1005	1160	1468	1468
1081	1239	1547	1547
1160	1315	1625	1625
1239	1394	1700	1778
1315	1468	1778	1858

If Mica/Accent Case is specified, add 103