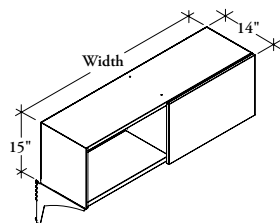


overhead storage

Xpress

LMSU

Upmount Sliding Door Storage Cabinet



The Upmount Sliding Door Storage Cabinet is a panel mounted, on- or off-module lockable storage unit.

WHAT'S INCLUDED

1 cabinet with back cover and 1 door, mounting hardware (as specified), inner cover (as specified), lock and keys.

NOTES

Can be mounted to Leverage and T/O/S.

Xpress Front Finish Style Flinwood (D3) and Natural Veneer are excluded from Teknion's Xpress Program.

PRODUCT OPTIONS

Height	Depth	Width	Inner Cover	Case & Inner Cover Finish	Front Finish Style	Key Style	Mounting Hardware
15	14	30, 36, 42, 48	0 None 1 One Side 2 Two Sides	Foundation Mica Accent	D1 Metal (Paint) D6 Fascia Laminate D7 Glass D3 Flintwood DN Natural Veneer	K Keyed Alike R Keyed Randomly	1 Leverage On-Module 2 T/O/S On/Off-Module 3 T/O/S On-Module

SAMPLE ORDER CODE

LMSU 15	14	48	0	74	D3	R	2
----------------	-----------	-----------	----------	-----------	-----------	----------	----------

DIMENSIONS
INCHES / MM

H	D	W
15 / 381	14 / 356	30 / 762
15 / 381	14 / 356	36 / 914
15 / 381	14 / 356	42 / 1067
15 / 381	14 / 356	48 / 1219

15 / 381	14 / 356	30 / 762
15 / 381	14 / 356	36 / 914
15 / 381	14 / 356	42 / 1067
15 / 381	14 / 356	48 / 1219

PRICING

NO INNER COVER (0)

Foundation Case								
Metal Front		Fascia Laminate Front		Glass Front	Flintwood Front	Natural Veneer Front		
Foundation	Mica/Accent	Grade 1	Grade 2					
896	912	992	997	1005	1084	1093		
990	1004	1095	1102	1116	1196	1207		
1076	1092	1190	1197	1211	1301	1311		
1158	1176	1286	1293	1306	1403	1413		

Mica/Accent Case								
1004	1022	1099	1108	1117	1190	1203		
1087	1102	1196	1203	1214	1295	1306		
1204	1221	1319	1326	1340	1428	1443		
1296	1315	1421	1435	1445	1542	1554		

Pricing is continued on the following page.

Upmount Sliding Door Storage Cabinet (Continued)

DIMENSIONS
INCHES / MM

H	D	W
15 / 381	14 / 356	30 / 762
15 / 381	14 / 356	36 / 914
15 / 381	14 / 356	42 / 1067
15 / 381	14 / 356	48 / 1219

15 / 381	14 / 356	30 / 762
15 / 381	14 / 356	36 / 914
15 / 381	14 / 356	42 / 1067
15 / 381	14 / 356	48 / 1219

15 / 381	14 / 356	30 / 762
15 / 381	14 / 356	36 / 914
15 / 381	14 / 356	42 / 1067
15 / 381	14 / 356	48 / 1219

15 / 381	14 / 356	30 / 762
15 / 381	14 / 356	36 / 914
15 / 381	14 / 356	42 / 1067
15 / 381	14 / 356	48 / 1219

PRICING

INNER COVER, ONE SIDE (1)

Grade 1 Case							
Metal Front		Fascia Laminate Front		Glass Front	Flintwood Front	Natural Veneer Front	
Foundation	Mica/Accent	Grade 1	Grade 2			Grade 1	Grade 2
966	983	1061	1070	1077	1151	1164	
1057	1076	1166	1173	1182	1264	1275	
1142	1163	1261	1265	1276	1366	1380	
1223	1247	1357	1360	1371	1468	1485	

Mica/Accent							
1083	1094	1179	1184	1190	1269	1277	
1165	1181	1272	1277	1288	1367	1380	
1279	1300	1399	1406	1413	1506	1515	
1371	1392	1503	1507	1519	1618	1629	

INNER COVER, TWO SIDES (2)

Foundation Case							
1036	1048	1132	1136	1145	1221	1231	
1126	1142	1235	1240	1251	1333	1344	
1214	1230	1327	1338	1345	1439	1448	
1295	1312	1420	1428	1443	1541	1552	

Mica/Accent Case							
1160	1173	1255	1261	1269	1345	1357	
1240	1259	1350	1357	1364	1447	1456	
1358	1372	1472	1478	1494	1583	1594	
1448	1467	1578	1587	1596	1694	1706	