

Z E C M S

Worksurface Support for Credenza Unit

This end support must be used between Top for Credenza Unit and worksurface. Configuration will vary if use with or without a Wall Panel.

WHAT'S INCLUDED

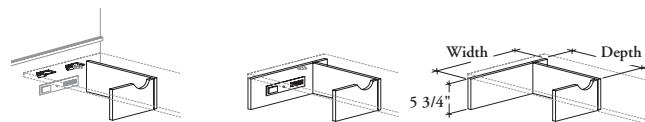
1 end support, power and data (if specified), and hardware.

WHAT'S EXCLUDED

Peninsula Worksurfaces, Rectangular Bridges, and Multi-Functional Drawer.

NOTES

The left or right handed is determined by the location of the credenza unit from the user.



Without End Support
(Wall Panel required) (W)

With End Support;
Power and Data (P)

With End Support;
No Power and Data (N)

PRODUCT OPTIONS

Support Style	Credenza Depth	Worksurface Depth	Configuration	Finish
N With End Support; No Power and Data	21, 24	24, 30, 36	L Left (Shown)	UK, UM, UN Natural Veneer Grade 2 MP, WH, WJ, WS, WW Natural Veneer Grade 3
P With End Support; Power and Data			R Right	
W Without End Support (Wall Panel required)				

SAMPLE ORDER CODE

ZECMS P	24	36	L	MP
----------------	-----------	-----------	----------	-----------

DIMENSIONS (NOMINAL) INCHES / MM

Cd	Wd
21 / 533	24 / 610
21 / 533	30 / 762
21 / 533	36 / 914
24 / 610	24 / 610
24 / 610	30 / 762
24 / 610	36 / 914

PRICING

WITHOUT END SUPPORT (W)	WITH END SUPPORT; NO POWER AND DATA (N)	WITH END SUPPORT; POWER AND DATA (P)
235	340	687
254	380	726
274	418	767
245	349	696
264	388	737
284	429	776