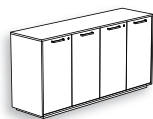


credenzas

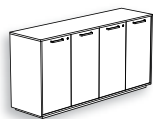
- CREDENZAS & ACCESSORIES OVERVIEW.60
- CREDENZA BASICS.61
 - BASE STYLES.62
 - TOP STYLES64
 - PULL STYLES.64
 - HINGES & SHELVES65
 - INTEGRATED FUNCTIONS.66
- PLANNING WITH CREDENZAS
 - INTERIOR CLEARANCE (DEPTH & HEIGHT)68
 - LOCKS & DIVISIONS CHART69
 - GRAIN DIRECTION71
- ACCESSORIES BASICS
 - INTERIOR DRAWER FOR CREDENZA72
 - DRAWER ORGANIZERS72
 - SYMBOL FOR CREDENZA.73
 - LOCKS & KEYS73

credenzas & accessories overview

CREDENZAS



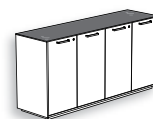
Standard
(MXCLN)



Ventilated
(MXCLV)



Standard with
Specialty Top
(MXCLS)



Ventilated with
Specialty Top
(MXCLX)

ELEVATED CREDENZAS



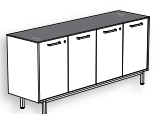
Standard
(MXCEN)



Ventilated
(MXCEV)



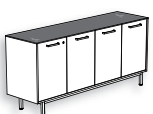
Ventilated &
Integrated Fridge
(MXCRV)



Standard with
Specialty Top
(MXCES)

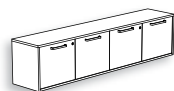


Ventilated with
Specialty Top
(MXCEX)

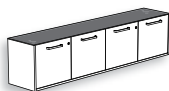


Ventilated &
Integrated Fridge
with Specialty Top
(MXCRX)

WALL-MOUNTED CREDENZAS



Standard
(MXCWN)

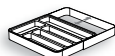


Standard with
Specialty Top
(MXCWS)

ACCESSORIES



Interior Drawer
for Credenza
(MXCID)



Drawer Organizer
– Cutlery Tray
(MXAOT)



Drawer Organizer
– Utility Box
(MXAOB)



Symbol for Credenza
(MXASR)



Locks and Keys
(K)

Set of Keys Alike
(SOKL)

credenzas basics

Expansion Meeting Credenzas are available in four base styles and feature a distinctive design where the outer case elegantly frames the doors for a clean, modern look. Options include a pull-out waste bin, ventilated compartment, integrated fridge and specialty top. Accessories such as a top drawer and discreet symbols to identify functionality can be specified separately.



Finishes

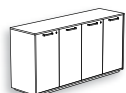
- **Front Finish:** Source Laminate, Grade 2 Laminate (No Accents) and Flintwood (No Cathedral)
- **Case Finish:** Source Laminate and Flintwood (No Cathedral)
- **Pull Finish (If Applicable):** Foundation, Mica and Accent
- **Specialty Top Finish:** Glass top are made with Gloss 10mm (H) Backpainted tempered glass

Finish Restrictions

- When Front Finish Source Laminate is specified, Case Finish Flintwood is **not** available

Credenzas in this section will be organized according to their base or foot style

Floor Credenzas (low base style)



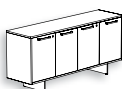
Credenza (MXCLN) or Credenza with Specialty Top (MXCLS)

- Depths: 16" or 20"
- Widths: 30" to 96" (6" increments)
- Heights: 29" or 36"

Credenza – Ventilated (MXCLV) or Credenza with Specialty Top – Ventilated (MXCLX)

- Depths: 20" or 24"
- Widths: 60" to 96" (6" increments)
- Heights: 29" or 36"

Elevated Credenzas (Elevated Base Style Blade Foot (B) or Square Foot (S))



Elevated Credenza (MXCEN) or Elevated Credenza with Specialty Top (MXCES)

- Depths: 16" or 20"
- Widths: 30" to 96" (6" increments)
- Heights: 29" or 36"

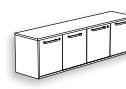
Elevated Credenza – Ventilated (MXCEV) or Elevated Credenza with Specialty Top – Ventilated (MXCEX)

- Depths: 20" or 24"
- Widths: 60" to 96" (6" increments)
- Heights: 36"

Elevated Credenza – Ventilated & Integrated Fridge (MXCRV) or Elevated Credenza with Specialty Top – Ventilated & Integrated Fridge (MXCRX)

- Depths: 24"
- Widths: 72" or 90"
- Heights: 36"

Wall-Mounted Credenzas (no base style)



Wall-Mounted Credenza (MXCWN) or Wall-Mounted Credenza with Specialty Top (MXCWS)

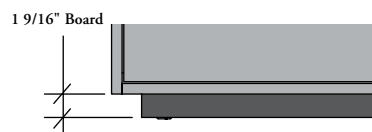
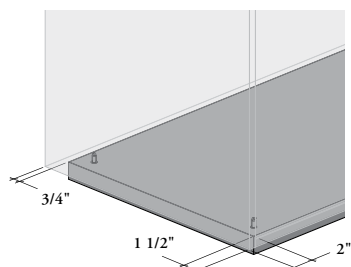
- Depths: 14"
- Widths: 54" to 96" (6" increments)
- Heights: 20"

Grain Direction; see page 71

credenza basics (continued)

low base style – solid base

Credenzas (MXCLN, MXCLV, MXCLS and MXCLX) are supported by a slightly recessed 1 9/16" board for an elegant look



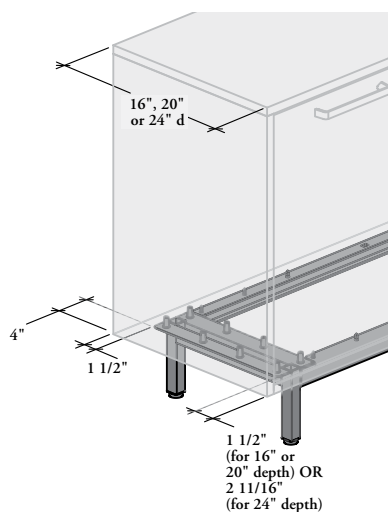
Built-in levelers are concealed within the solid base, giving the credenzas the appearance of sitting directly on the floor



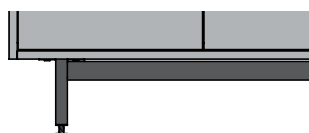
Levelers provide 1 3/8" adjustment range

elevated base styles – square foot

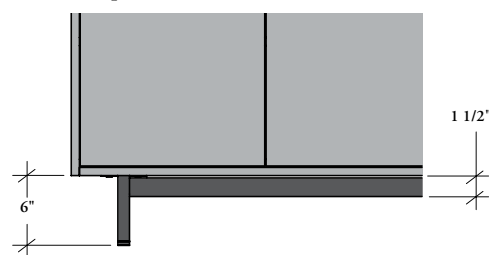
Credenzas with square feet (MXCEN, MXCEV, MXCRV, MXCES, MXCEX, MXCRX) are supported by 6" high metal legs, reinforced with a surrounding metal frame that ensures a consistent look



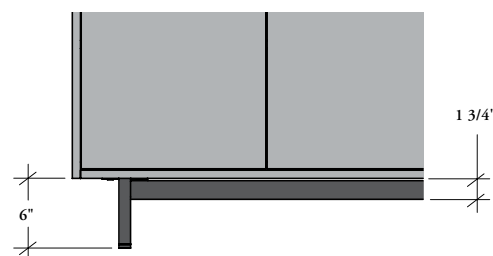
- Square feet are recessed to the case
- Levelers allow 3 3/4" adjustment
- Levelers are black



16" or 20" Depth



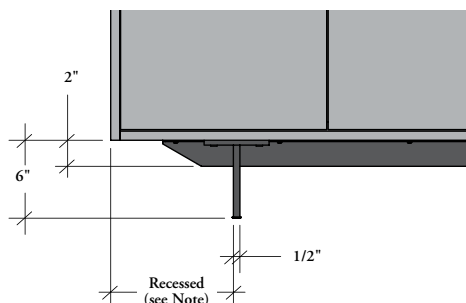
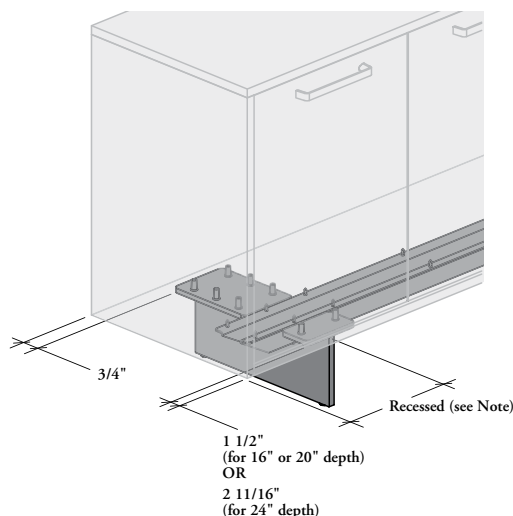
24" Depth



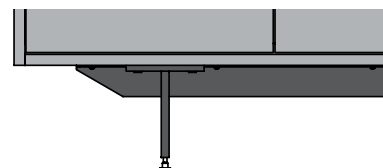
credenza basics (continued)

elevated base styles – blade foot

Credenzas with blade feet (MXCEN, MXCEV, MXCRV, MXCES, MXCEX, MXCRX) are supported by 6" high solid aluminum blades with recessed reinforcement channel for a refined aesthetic

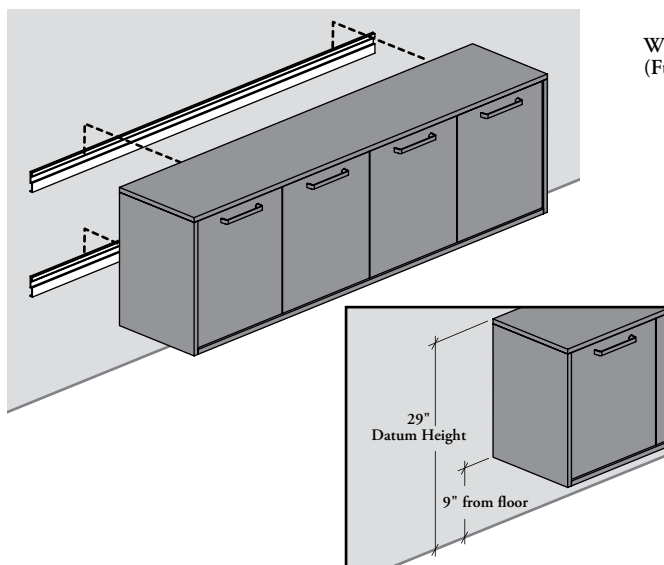


- **NOTE:** The Blade Foot position is proportional to the credenza's width, with a recess varying from 4 1/4" to 13 3/4" based on the credenza's dimensions
- Blades and reinforcement have the same finish
- Always come with chromed levelers
- Levelers allow 15/16" adjustment



no base style – wall-mounted credenzas

Wall-Mounted Credenzas are secured using hooks mounted on wall rails, keeping the floor clear for easy cleaning while offering a clean, contemporary and minimalist design



Wall-Mounted Hooks
(Full Width)

14" Depth
Installation on two wall-mounted rails

SIDE VIEW

Wall-Mounted Rails
(Full Width)

- Can be mounted at any height. When mounted at 29" datum height, a 9" gap is left under the credenza
- Wall-Mounted Credenzas are only available at 14" depth. No Pull-Out Bins (N), Ventilated Compartment, Integrated Fridge or Interior Drawer for Credenza (MXCID) options are available or compatible

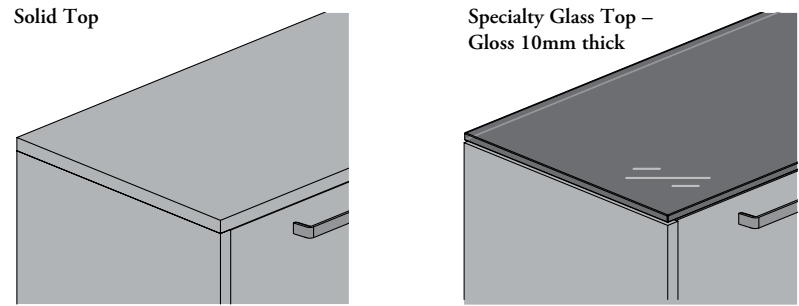
- Anti-dislodgement hardware, hooks, and wall rails are supplied with the credenzas

- **NOTE:** It is the responsibility of the installer to properly attach Wall-Mounted Rails to the wall; additional wall reinforcement is **not** required when using Wall-Mounted Rails. Installer must provide wall mounting fasteners and ensure compliance with local building codes and laws

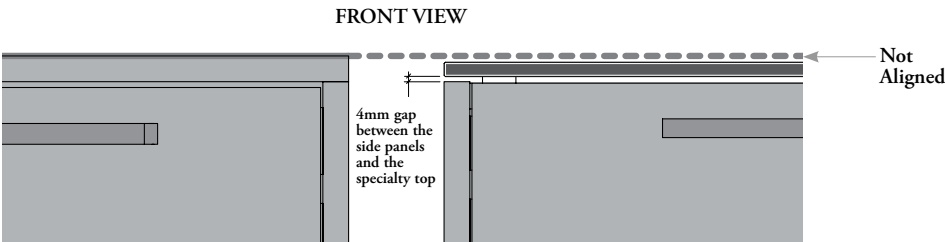
application guide

credenza basics (continued)

top styles – solid or specialty

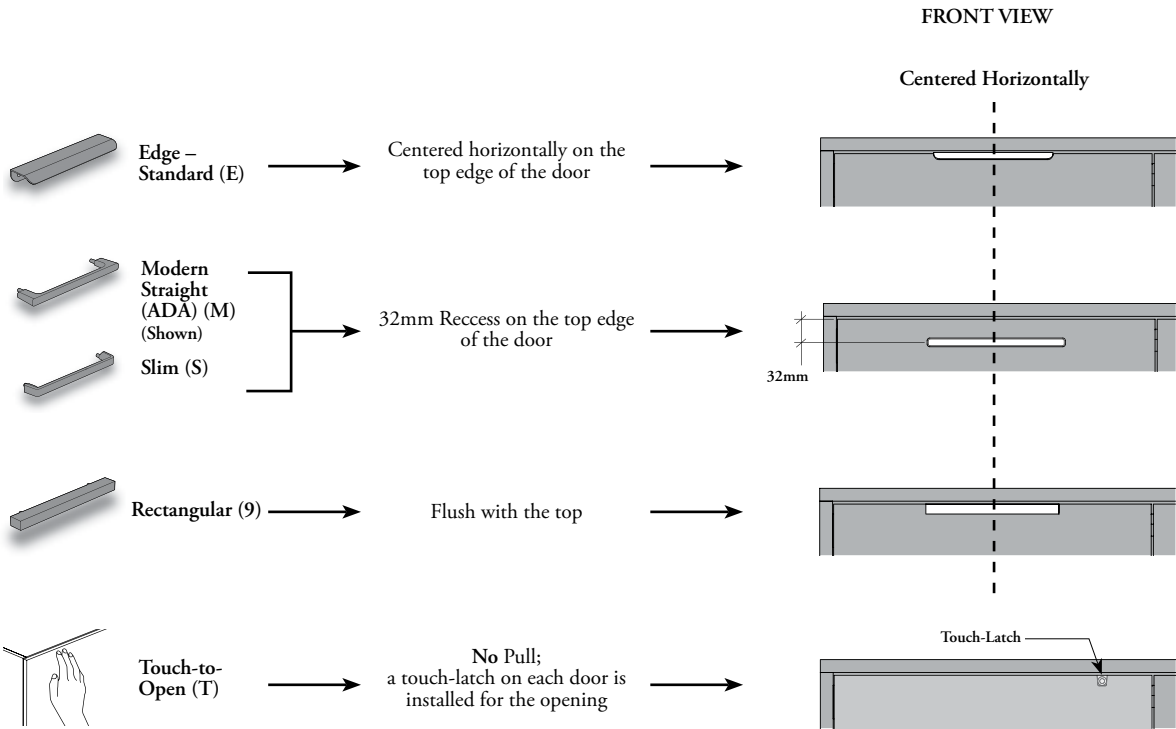


When specified with a solid top, credenza height is actual



Regardless of the top chosen, the credenza's side panels are the same height. Therefore, the overall height of a credenza will vary slightly when specified with a Specialty top (Shown with 10mm glass top)

pull styles



credenza basics (continued)

pull styles (continued)

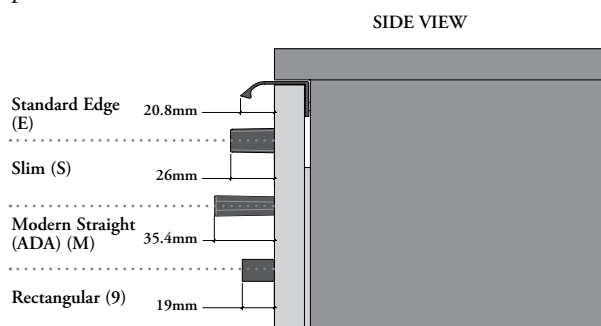
hole patterns

- The Rectangular Pull Style use a 128mm hole pattern
 - The Slim and Modern Straight (ADA) Pull Styles use a 160mm hole pattern
 - The Standard Edge Pull has a dedicated hole pattern from the back of the door front and are **not** interchangeable with other pulls
- Some applications may require a countersinking hole at the back

Interchangeable within the same group:

- Slim (S) and
- Modern Straight (ADA) (M)

pull clearance



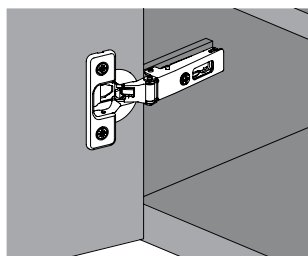
hand clearance

Rectangular = 15mm
 Slim = 20mm
 Modern Straight (ADA) = 26mm

hinges & shelves

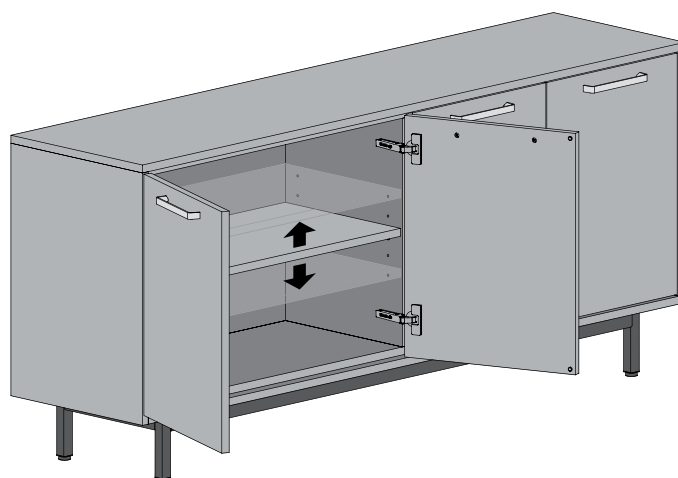
Hinges

- All credenzas are equipped with soft close hinges, except when specified Touch-to-Open (T) where regular hinges are required
- Door hinges open up to 110 degrees



Shelves

- All credenza compartments come with one shelf, except for the sections with a Pull-Out Bin or an Integrated Fridge
- The internal dimensions enable shelf repositioning within any compartment of the same credenza. All double compartments are identical in size, as are all single compartments
- Five adjustment holes allow for flexible shelf positioning
- The center hole divides the space into two equal sections
- The top and bottom holes create a one-third/two-thirds division of space



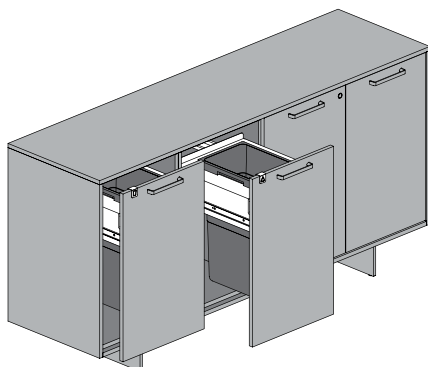
Interior Clearance; see page 68

Locks & Divisions Chart; see page 69

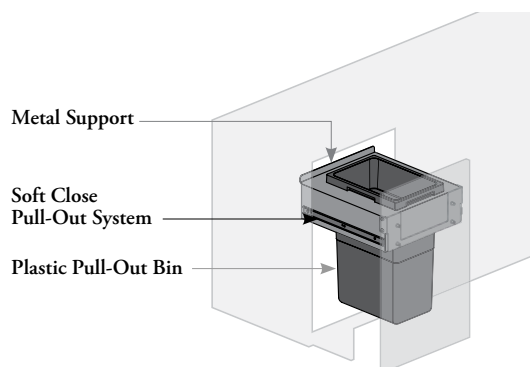
credenza basics (continued)



integrated function – pull-out bin(s)

Pull-Out Bins offer easy and discreet management of waste and/or recyclable materials



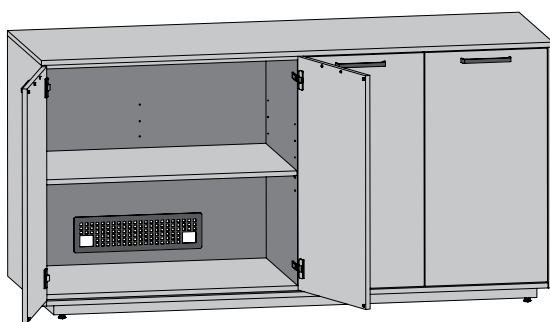
- Available in the following products:
 - Credenzas (MXCLN, MXCLS (20" d only), MXCLV or MXCLX)
 - Elevated Credenzas (MXCEN or MXCES (20" d X 36" h only), MXCEV, MXCRV, MXCEX or MXCRX)
- Two Pull-Out Bins option is only available for credenzas from width 60" to 96"
- **Not** compatible with Touch-to-Open (T) pull style
- **Not** lockable. Even when the credenza is specified with locks, the Pull-Out Bin compartment is **not** lockable
- Come with Soft Close Pull-Out System



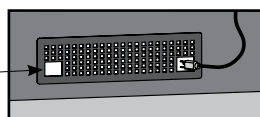
- Symbols for Credenza (MXASR) can be specified separately to easily identify pull out locations  
- Each Pull-Out Bin compartment is independent
- A 38L bin is included with each pull-out. Height, door width, and depth **do not** affect waste capacity
- Pull-Out Bins are located at either the left (Shown) or right end of the credenza

integrated function – ventilated compartment

- Ventilated compartment can accommodate small appliance, A/V and electronics devices
- The following products are ventilated:
 - Credenzas (MXCLV or MXCLX)
 - Elevated Credenzas (MXCEV, MXCRV, MXCEX or MXCRX)

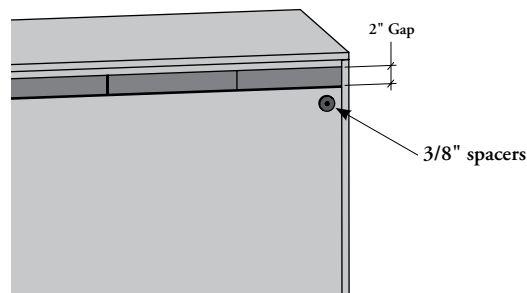


Cable Pass-Through



- **NOTE:** It is the specifier's responsibility to ensure that the appliance clearance complies with the manufacturer recommendations
- Refer to the instructions of the Owner's Manual of the appliance or devices

BACK VIEW



- Ventilated compartments feature a 2" gap along the top of the back panel for full-credenza ventilation, and a vent at the bottom of each section (excluding Pull-Out Bin and Integrated Fridge sections)
- Ventilated Credenzas should be used against a wall (back is **not** aesthetic)
- Vents are color coordinate with the case
- Each vent integrates 2 Cable Pass-Through
- 3/8" spacers are included to ensure proper gap with the wall for efficient ventilation

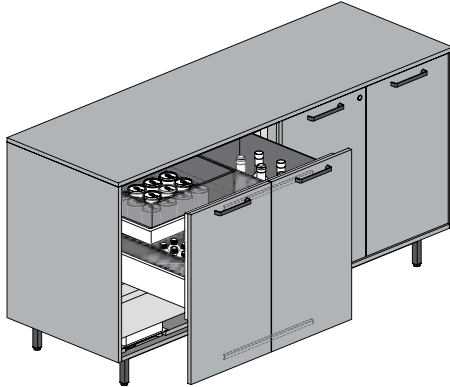
Interior Clearance; see page 68

Locks & Divisions Chart; see page 69

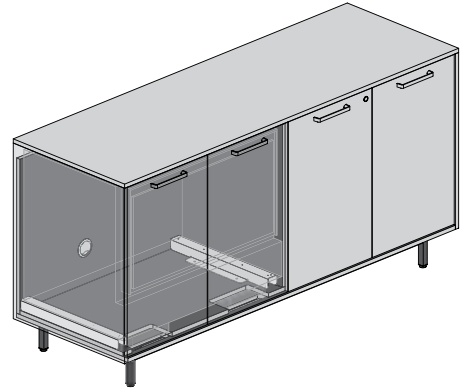
credenza basics (continued)

integrated function – integrated fridge

- The following products come with a compartment for an Integrated Fridge:
 - Elevated Credenzas (MXCRV or MXCRX)



- NOTE:** Ready for: Fisher & Paykel RB36S25MKIWN1 (Integrated Fridge **not** included and must be provided by the customer)
- Only available on Elevated Credenza 24" d X 36" h
- Symbols for Credenza (MXASR) can be specified separately to easily identify pull out locations

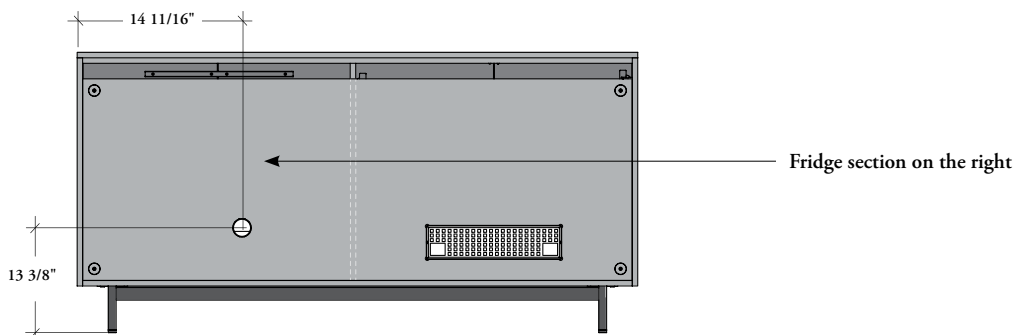
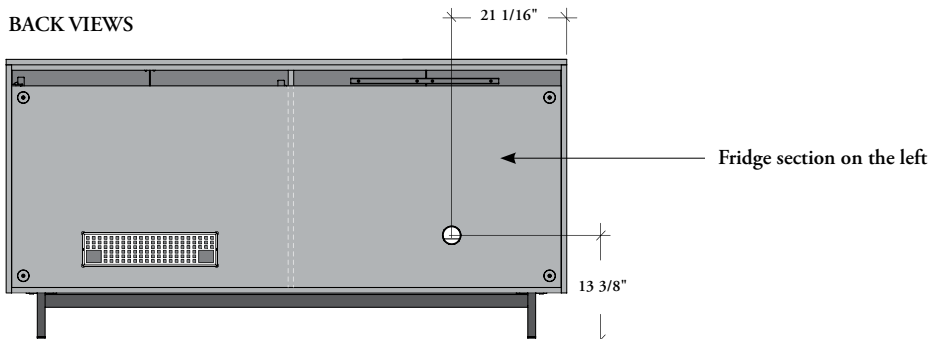


- The compartment for the Integrated Fridge is located at either the left (Shown) or right end of the credenza
- When Pull-Out Bins and Integrated Fridge are specified on the same credenza, the Pull-Out Bin(s) will be positioned next to the Integrated Fridge

Grommet Positions

A grommet is located in the back of the compartment for Integrated Fridge for wire management

BACK VIEWS



Interior Clearance; see page 68

Locks & Divisions Chart; see page 69

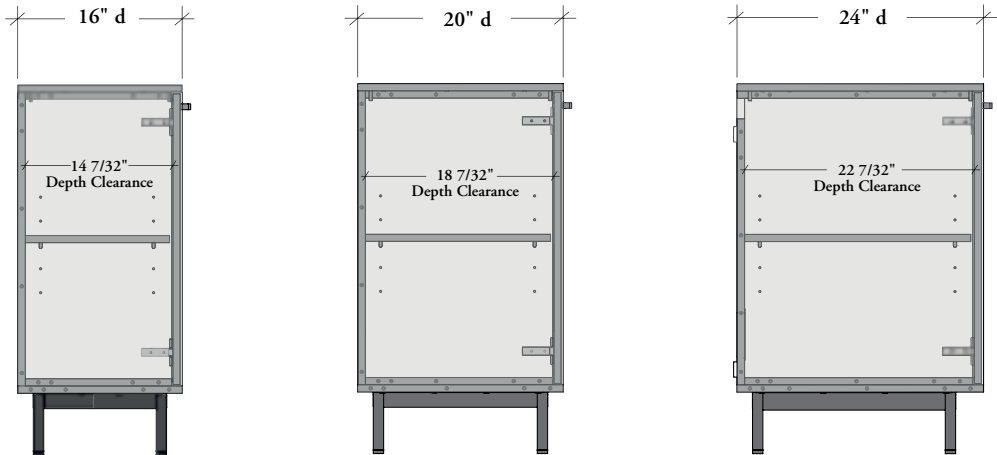
application guide

planning with credenzas

Not all dimension combinations are available. Refer to the individual product pages for details

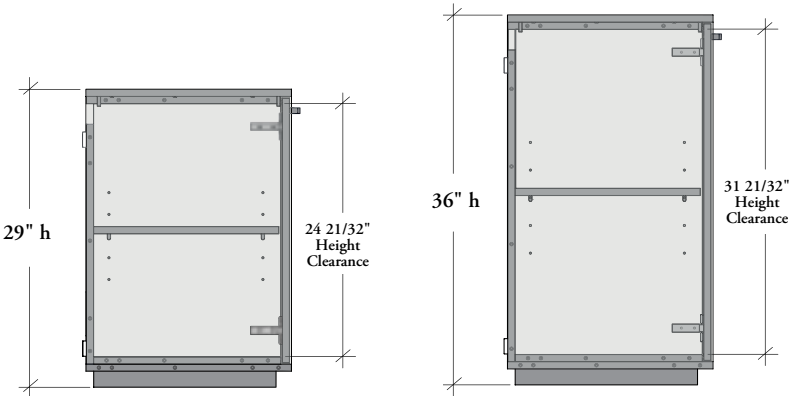
interior clearance (depth only)

solid base and square (shown) or blade foot

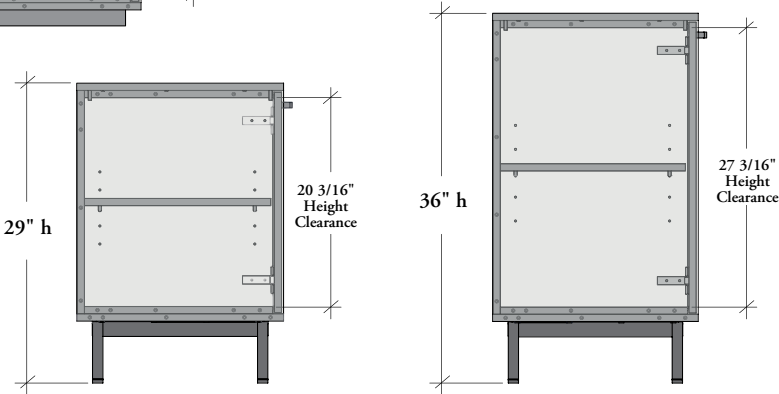


interior clearance (height only)

solid base



square or blade foot



planning with credenzas (continued)



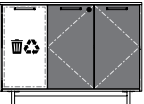
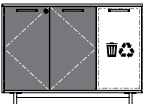
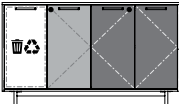
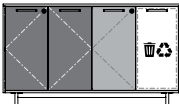
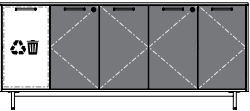
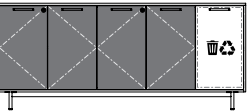
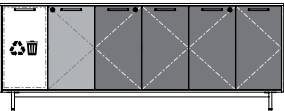
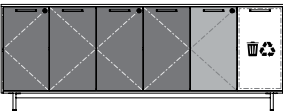
locks & divisions chart

If specified, all closed cabinet products come with a lock and key set and can be Keyed Alike (K) or Randomly (R). A Key Chart must accompany every order, otherwise orders will be shipped Keyed Randomly

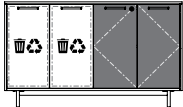
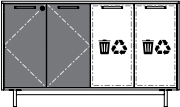
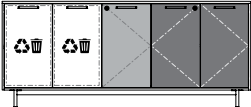
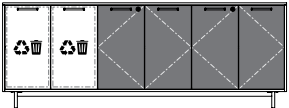
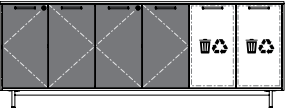



Credenzas (MXCLN, MXCLV, MXCLS or MXCLX) – No Pull-Out Bin (N),
Elevated Credenzas (MXCEN, MXCEV, MXCES or MXCEX) – No Pull-Out Bin (N) or
Wall-Mounted Credenzas (MXCWN or MXCWS)

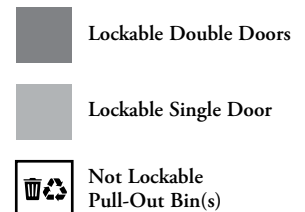
door configuration	30" or 36" w 	42" to 54" w 	60" to 72" w 	78" to 90" w 	96" w
number of locks	1 x	2 x	2 x	3 x	3 x

Credenzas (MXCLN, MXCLV, MXCLS or MXCLX) – 1 Pull-Out Bin or
Elevated Credenzas (MXCEN, MXCEV, MXCES or MXCEX) – 1 Pull-Out Bin

door configuration	30" or 36" w		42" to 54" w		60" to 72" w					
		OR			OR			OR		
	1 Pull-Out Bin – Left (L)		1 Pull-Out Bin – Right (R)		1 Pull-Out Bin – Left (L)		1 Pull-Out Bin – Right (R)		1 Pull-Out Bin – Left (L)	
number of locks	1 x		1 x		2 x					
drawer configuration	78" to 90" w		96" w							
		OR			OR					
	1 Pull-Out Bin – Left (L)		1 Pull-Out Bin – Right (R)		1 Pull-Out Bin – Left (L)		1 Pull-Out Bin – Right (R)			
number of locks	2 x		3 x							

Credenzas (MXCLN, MXCLV, MXCLS or MXCLX) – 2 Pull-Out Bins or
Elevated Credenzas (MXCEN, MXCEV, MXCES or MXCEX) – 2 Pull-Out Bins

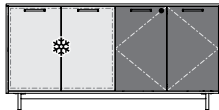
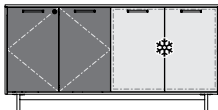
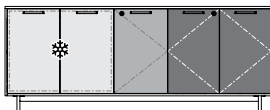
door configuration	60" to 72" w		78" to 90" w			
	 2 Pull-Out Bins – Left (T)	OR	 2 Pull-Out Bins – Right (V)	OR	 2 Pull-Out Bins – Left (T)	OR
number of locks	1 x		2 x			
drawer configuration	96" w					
	 2 Pull-Out Bins – Left (T)	OR	 2 Pull-Out Bins – Right (V)	<div> Lockable Double Doors</div> <div> Lockable Single Door</div> <div> Not Lockable Pull-Out Bin(s)</div>		
number of locks	2 x					



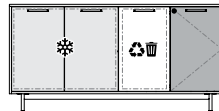
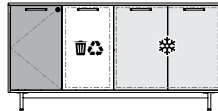

planning with credenzas (continued)

locks & divisions chart (continued)

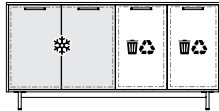
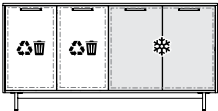
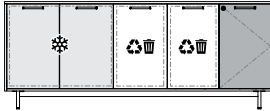
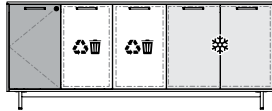
Elevated Credenzas – Ventilated & Integrated Fridge (MXCRV or MXCRX) – No Pull-Out Bin


door configuration	72" w		90" w			
		OR		OR		OR
number of locks	1 x		2 x			


Elevated Credenzas – Ventilated & Integrated Fridge (MXCRV or MXCRX) – 1 Pull-Out Bin


door configuration	72" w		90" w			
		OR		OR		OR
number of locks	1 x		1 x			


Elevated Credenzas – Ventilated & Integrated Fridge (MXCRV or MXCRX) – 2 Pull-Out Bins

drawer configuration	72" w		90" w					
		OR		OR		OR		
	Fridge – Left (L) and 2 Pull-Out Bins (2)		Fridge – Left (L) and 2 Pull-Out Bin (2)		Fridge – Right (L) and 2 Pull-Out Bins (2)		Fridge – Right (L) and 2 Pull-Out Bin (2)	
number of locks	0 x				1 x			

 Lockable Double Doors

 Lockable Single Door

 Not Lockable Fridge

 Not Lockable Pull-Out Bin(s)

planning with credenzas (continued)

grain direction

- Woodgrain pattern on the Countertop and Island Countertop run parallel to length of the worksurface
- Door grain direction will always be vertical
- Drawer front grain direction will vary depending on product and finish selected
- The grain direction will be as illustrated below, whether the grain is cathedral, straight, Source Laminate or Flintwood. But only cathedral wood grains will be bookmatched


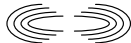
laminate

Source Laminate

- 3F – 3K – XJ

Foundation Laminate

- 2F – 2K – JG

Laminate =  = Grain Direction = 

For colors listed above, the Straight Grain Pattern for door and drawer fronts will be vertical

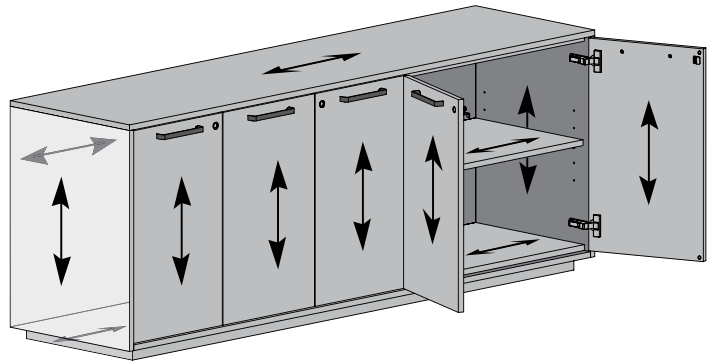
Source Laminate

- 3A – 3D – 3E – 3L – 3M – 3X – 8E – 8R – 8S – XR – 86 – 87 – 88

Foundation Laminate

- 2A – 2D – 2E – 2L – 2M – 2X – 7B – 7M – 7S – 7U – 7V – 7Z – YR

For colors listed above, the Cathedral Grain Pattern for door and drawer fronts will be book-matched



flintwood

Flintwood has a rift cut grain pattern



Straight Grain Pattern:

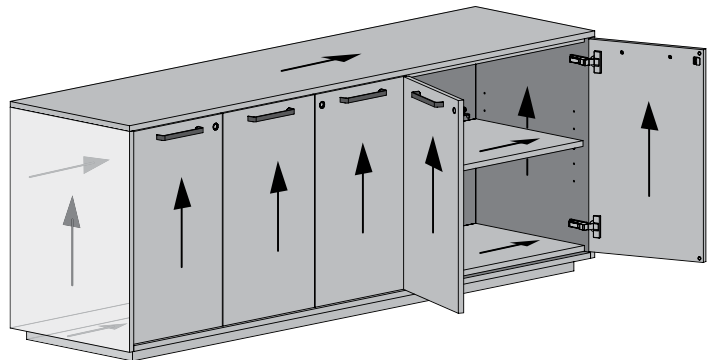
Flintwood

- FN – NR – NT – ZB – ZD – ZE – ZF – ZQ – 5N – 5P – 5S – 5W – 5Z

For colors listed above, the Straight Grain Pattern for door and drawer fronts will be vertical

NOTE: When Flintwood fronts are specified on Source Laminate case, fronts will **not** be book-matched

Flintwood =  = Grain Direction = 



application guide

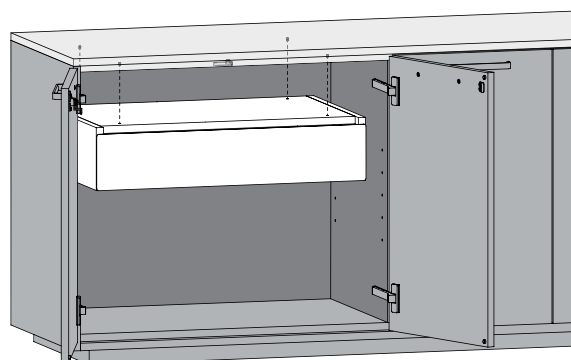
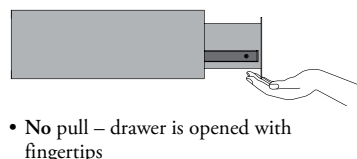
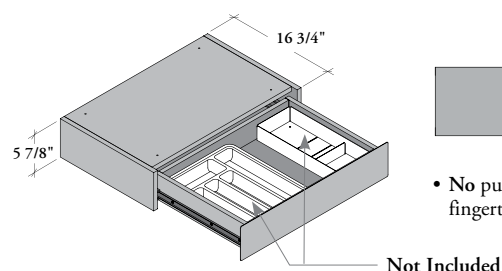
accessories basics

Expansion Meeting Accessories are used to enhance functionality and add a finishing touch to Expansion Meeting Credenzas.

interior drawer for credenza

Interior Drawer for Credenza (MXCID)

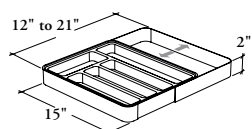
- Credenza Widths: 30" to 96" (6" increments)
- Compatible with all 20" and 24" depth credenzas with dual door sections (T) to provide additional storage
- Each drawer is sold individually. The drawer fits one double-door compartment of the specified Credenza Width
- Drawers have standard slides
- Drawer Organizers – Cutlery Tray (MXAOT) and – Utility Box (MXAOB) are compatible with the interior drawer for credenza



- There are pre-drilled holes on the top of each double door compartment where a drawer can be used to help position the drawer in the compartment
- **NOTE:** The integration of an Interior Drawer for Credenza (MXCID) into a ventilated compartment may compromise its ventilation efficiency
- Refer to Locks & Divisions Chart on previous pages to locate double door compartments
- **Finishes:**
Front is finished in Foundation, Mica or Accent
Case is finished in Source Laminate
Drawer features a 16" deep white drawer body

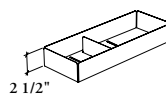
drawer organizers

Organizers can be added to Interior Drawer for Credenza (MXCID) to customize and personalize the storage space



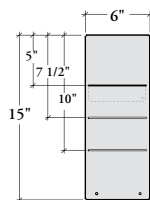
Cutlery Tray (MXAOT)

- Retractable plastic tray for kitchen cutlery
- Offers organization of cutlery, remotes or various items
- Made in two pieces and can extend up to 21" width
- The Drawer Organizer – Cutlery Tray fits in Interior Drawer for Credenza (MXCID)
- **Finish:** Grey Plastic



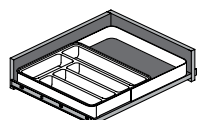
Utility Box (MXAOB)

- Width: 6"
- Credenza Depths: 20" and 24"
- Metal tray with one adjustable metal divider. The divider is held in place by magnet (easily reconfigurable)
- The reconfigurable divider can be installed in three different positions
- The Utility Box fits in the Interior Drawer for Credenza (MXCID). Since all credenza depths share the same drawer, the Utility Box will have the same depth (15") regardless of the credenza depth specified
- **Finishes:**
Foundation, Mica or Accent (To match the color of the drawer body, Very White should be specified)

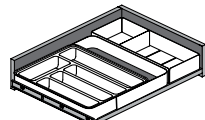


drawer organizer combinations

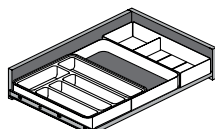
Depending on the credenza width, several Drawer Organizers can be combined together in the Interior Drawer for Credenza (MXCID). Here are examples of how the accessories can be used



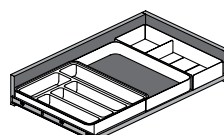
42" credenza width



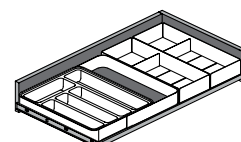
30" or 60" credenza width



Interior Drawer for Credenza with
48", 78" or 96" credenza width



66" or 84" credenza width



36", 54", 72" or 90" credenza width

accessories basics (continued)

symbol for credenza

Provides a discreet way to indicate the location of specific functions

- Three symbols are available:



1 Waste (W)

2 Recycling (R)

3 Fridge (F)

Symbol for Credenza (MXASR)

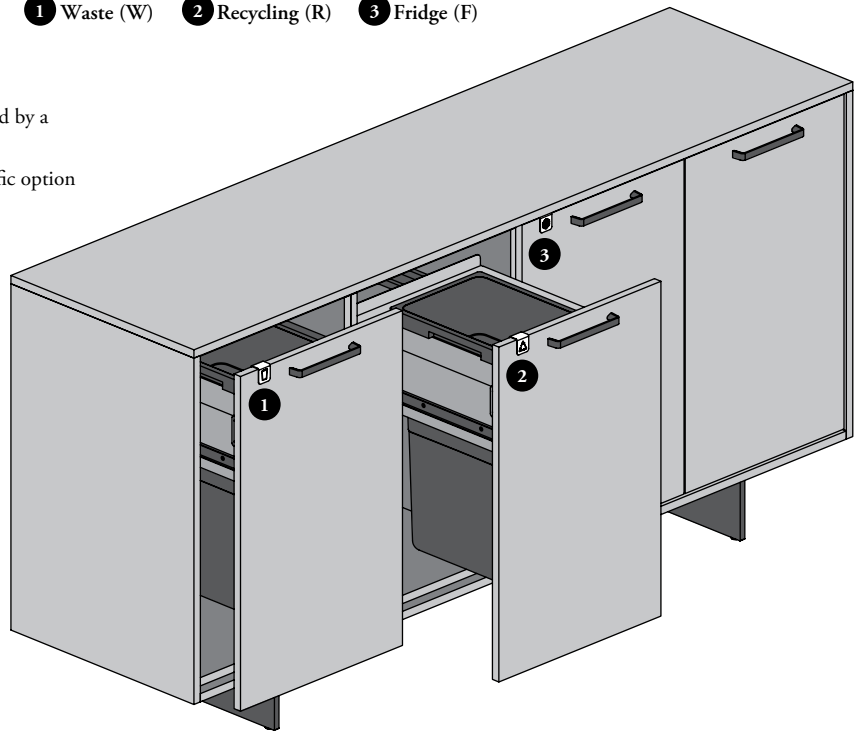
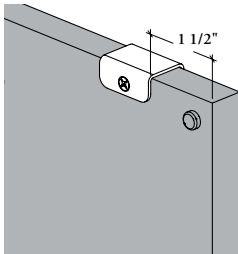
- Dimension: 1 1/4" w X 1 1/4" h
- Each fridge or pull-out bin compartment can be identified by a Symbol for Credenza
- Easily attaches to the back of the storage front – no specific option needs to be selected on the credenza

Finishes:

Plate is finished in Foundation, Accent or Mica

recommended position

It is recommended to be positioned at 1 1/2" from the top of the door



locks & keys

- Three styles are available:



Master Key
(M)



Lock Removal
Key (R)



Lock Core
and Keys (C)

Locks and Keys (K)

- The Master Key (M) unlocks any storage unit
- The Lock Removal Key (R) removes lock core from storage units
- Lock Core and Keys (C) are replacements for those currently installed
- Finish: Brushed Chrome

Locks & Divisions Chart; see page 69