

Supports to be installed at both end of the Single- or Double-Sided Library Table. This product can also be specified on ADA Extension for Library Table.



XLBR Rectangular Base

WHAT'S INCLUDED

1 rectangular base with levelers, 1 or 2 cable pass-through grommets (as specified), mounting brackets and mounting hardware.

WHAT'S EXCLUDED

Single- or Double Library Tables and Cable Pass-Through Cover.

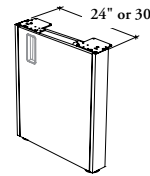
NOTES

Must be specified the same depth than the Library Table.

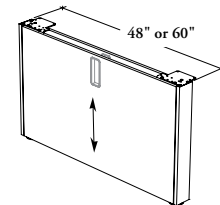
Rectangular Bases on Library Table – Single-Sided are handed and must be specified Left (L) or Right (R).

Base height is 29" or 33" from finished floor to the top of the finished worksurface with a leveling range of 3 1/2".

Not all finishes are available in Xpress, see Xpress catalogue and/or specification software for details.



Single-Sided – Right (R) or Left (L) Handed



Double-Sided (D)

PRODUCT OPTIONS

Configuration	Height	Depth	Cable Pass-Through Grommet Option	Panel Finish	Support Finish
D Double-Sided (Shown)	29, 33 (ADA)	24, 30, 48, 60	N None	Source Laminate	AC Clear Anodized
L Single-Sided – Left Handed (Shown)			W With Cable Pass-Through Grommet (Shown)	Flintwood	Foundation
R Single-Sided – Right Handed					Mica Accent

SAMPLE ORDER CODE

XLBR L	29	24	N	XS	AC
---------------	-----------	-----------	----------	-----------	-----------

DIMENSIONS INCHES / MM

H	D
29 / 737	24 / 610
29 / 737	30 / 762
29 / 737	48 / 1219
29 / 737	60 / 1524
33 / 838	24 / 610
33 / 838	30 / 762
33 / 838	48 / 1219
33 / 838	60 / 1524

PRICING

SINGLE-SIDED CONFIGURATION (L or R)

PANEL FINISH

Source Laminate	Flintwood
766	1272
824	1374
n/a	n/a
n/a	n/a
799	1350
890	1555
n/a	n/a
n/a	n/a

DOUBLE-SIDED CONFIGURATION (D)

Source Laminate	Flintwood
n/a	n/a
n/a	n/a
991	1926
1104	n/a
n/a	n/a
n/a	n/a
1081	2098
1205	n/a