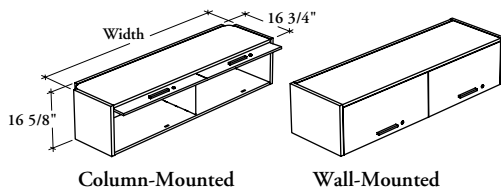


# mounted storage & accessories

**Xpress**

## RORML

### Overhead Cabinet – Metal Receding Door(s) – Linear Style



This cabinet is a metal mounted storage unit that provides above worksurface storage capabilities.

#### WHAT'S INCLUDED

1 overhead cabinet, column- or wall-mounting supports, pulls, lock and keys, and components as listed below:

	Widths	
	24" to 48"	54" to 84"
Door	1	2
Divider	n/a	1

#### WHAT'S EXCLUDED

Structural Columns.

#### NOTES

This cabinet has a 19 1/2" clearance between the top of the desk to the bottom of the cabinet.

This cabinet is shipped knocked down.

Specify the width according to the width of the desk over which the overhead cabinet is mounted. Column-Mounted Overhead Cabinet width is actually 2.5" less.

Soft Touch (2) and Standard T/O/S (4) pulls are only available in limited Foundation colors. Refer to the specification software for details.

#### PRODUCT OPTIONS

Mounted Style	Depth	Width	Door Finish	Case Finish	Pull Style	Pull Finish	Key Style
<b>C</b> Column-Mounted	16	24, 30, 36, 42, 48, 54, 60, 66, 72, 78, 84	Foundation Mica	Foundation Mica	<b>1</b> Standard Expansion <b>2</b> Soft Touch <b>4</b> Standard T/O/S <b>6</b> Arched <b>7</b> Elliptical <b>9</b> Rectilinear	Foundation Accent Mica	<b>K</b> Keyed Alike <b>R</b> Keyed Randomly <b>N</b> No Lock
<b>W</b> Wall-Mounted							

#### SAMPLE ORDER CODE

<b>RORML C</b>	<b>16</b>	<b>78</b>	<b>Q</b>	<b>Q</b>	<b>7</b>	<b>E</b>	<b>R</b>
----------------	-----------	-----------	----------	----------	----------	----------	----------

#### DIMENSIONS INCHES / MM

D	W
16 / 406	24 / 610
16 / 406	30 / 762
16 / 406	36 / 914
16 / 406	42 / 1067
16 / 406	48 / 1219
16 / 406	54 / 1372
16 / 406	60 / 1524
16 / 406	66 / 1676
16 / 406	72 / 1829
16 / 406	78 / 1981
16 / 406	84 / 2134

#### PRICING

##### DOOR FINISH

Foundation	Mica
1110	1130
1141	1166
1208	1235
1296	1324
1369	1394
1835	1858
1924	1949
2016	2045
2118	2143
2189	2224
2304	2340

If Mica case is specified, add 138.