

This cabinet is a metal mounted storage unit that provides above worksurface storage capabilities.

WHAT'S INCLUDED

1 overhead cabinet, column- or wall-mounting supports, pulls, lock and keys, and components as listed below:

	Widths	
	24" to 48"	54" to 84"
Door	1	2
Divider	n/a	1

WHAT'S EXCLUDED

Structural Columns.

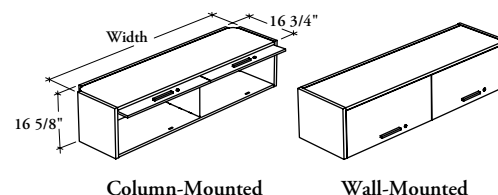
NOTES

This cabinet has a 19 1/2" clearance between the top of the desk to the bottom of the cabinet.

This cabinet is shipped knocked down.

Specify the width according to the width of the desk over which the overhead cabinet is mounted. Column-Mounted Overhead Cabinet width is actually 2.5" less.

Soft Touch (2) and Standard T/O/S (4) pulls are only available in limited Foundation colors. Refer to the specification software for details.



PRODUCT OPTIONS

Mounted Style	Depth	Width	Door Finish	Edge Trim Finish	Case Finish	Shelf and Divider Finish (Source Laminate Case only)	Pull Style	Pull Finish	Key Style
C Column-Mounted	16	24, 30, 36, 42, 48, 54, 60, 66, 72, 78, 84	Source Laminate	Edge Trim Colors	Source Laminate	Foundation	1 Standard Expansion	Foundation	K Keyed Alike
W Wall-Mounted			Foundation Laminate		Foundation Mica	Mica	2 Soft Touch	Accent	R Keyed Randomly
			Flintwood			Coordinate Colors	4 Standard T/O/S	Mica	N No Lock
							6 Arched		
							7 Elliptical		
							9 Rectilinear		

SAMPLE ORDER CODE

RORL C	16	78	3D	4D	Q		6	E	R
---------------	-----------	-----------	-----------	-----------	----------	--	----------	----------	----------

DIMENSIONS INCHES / MM

D	W
16 / 406	24 / 610
16 / 406	30 / 762
16 / 406	36 / 914
16 / 406	42 / 1067
16 / 406	48 / 1219
16 / 406	54 / 1372
16 / 406	60 / 1524
16 / 406	66 / 1676
16 / 406	72 / 1829
16 / 406	78 / 1981
16 / 406	84 / 2134

PRICING

Source Laminate	Foundation Laminate	Flintwood
1093	1153	1687
1151	1185	1739
1207	1255	1846
1262	1347	1990
1317	1422	2088
1784	1907	2593
1870	1999	2713
1957	2095	2834
2044	2201	2968
2131	2274	3086
2213	2394	3245

If Mica case is specified, add 143.