

This cabinet is a metal mounted storage unit that provides above worksurface storage capabilities.

#### WHAT'S INCLUDED

1 overhead cabinet, column- or wall-mounting supports, and 1 divider (54" to 84" only).

#### WHAT'S EXCLUDED

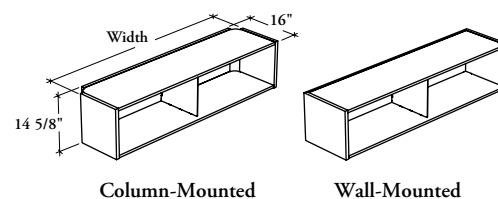
Structural Columns.

#### NOTES

Specify the width according to the width of the desk over which the overhead cabinet is mounted. Column-Mounted Overhead Cabinet width is actually 2.5" less.

This cabinet has a 21 1/2" clearance between the top of the desk to the bottom of the cabinet.

## ROCO Overhead Cabinet – No Door



#### PRODUCT OPTIONS

Mounted Style	Depth	Width	Case Finish	Shelf and Divider Finish (Source Laminate Case only)
<b>C</b> Column-Mounted	16	24, 30, 36, 42, 48, 54, 60, 66, 72, 78, 84	Source Laminate	Foundation
<b>W</b> Wall-Mounted			Foundation Mica	Mica Coordinate Colors

#### SAMPLE ORDER CODE

<b>ROCO C</b>	<b>16</b>	<b>30</b>	<b>E</b>	
---------------	-----------	-----------	----------	--

#### DIMENSIONS INCHES / MM

D	W
16 / 406	24 / 610
16 / 406	30 / 762
16 / 406	36 / 914
16 / 406	42 / 1067
16 / 406	48 / 1219
16 / 406	54 / 1372
16 / 406	60 / 1524
16 / 406	66 / 1676
16 / 406	72 / 1829
16 / 406	78 / 1981
16 / 406	84 / 2134

#### PRICING

Source Laminate/Foundation	Mica
660	803
714	858
755	902
820	964
863	1004
903	1047
925	1071
959	1104
987	1129
1009	1154
1098	1242