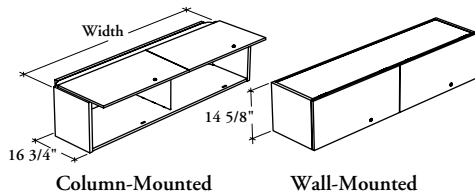


# mounted storage & accessories

**Xpress**

## ROCMF

### Overhead Cabinet – Metal Flipper Door(s)– Flush Front Style



This cabinet is a metal mounted storage unit that provides above worksurface storage capabilities.

#### WHAT'S INCLUDED

1 overhead cabinet, column- or wall-mounting supports, lock and keys, and components as listed below:

	Widths	
	24" to 48"	54" to 84"
Door	1	2
Divider	n/a	1

#### WHAT'S EXCLUDED

Structural Columns.

#### NOTES

This cabinet is shipped knocked down.

This cabinet has a 21 1/2" clearance between the top of the desk to the bottom of the cabinet.

Specify the width according to the width of the worksurface over which the overhead cabinet is mounted. Column-Mounted Overhead Cabinet width is actually 2.5" less.

#### PRODUCT OPTIONS

Mounted Style	Depth	Width	Door Finish	Case Finish	Key Style	Motion Control Mechanism
<b>C</b> Column-Mounted	16	24, 30, 36, 42, 48, 54, 60, 66, 72, 78, 84	Foundation	Foundation	<b>K</b> Keyed Alike <b>R</b> Keyed Randomly <b>N</b> No Lock	<b>2</b> With Motion Control Mechanism
<b>W</b> Wall-Mounted			Mica	Mica		

#### SAMPLE ORDER CODE

<b>ROCMF W</b>	<b>16</b>	<b>24</b>	<b>E</b>	<b>E</b>	<b>K</b>	<b>2</b>
----------------	-----------	-----------	----------	----------	----------	----------

#### DIMENSIONS INCHES / MM

D	W
16 / 406	24 / 610
16 / 406	30 / 762
16 / 406	36 / 914
16 / 406	42 / 1067
16 / 406	48 / 1219
16 / 406	54 / 1372
16 / 406	60 / 1524
16 / 406	66 / 1676
16 / 406	72 / 1829
16 / 406	78 / 1981
16 / 406	84 / 2134

#### PRICING

DOOR FINISH	
Foundation	Mica
1023	1049
1063	1085
1137	1163
1234	1255
1278	1302
1327	1351
1369	1393
1426	1456
1482	1511
1557	1587
1632	1663

If Mica case is specified, add 138.

If Motion Control Mechanism is specified, add 232 (24" – 48" widths).  
add 464 (54" – 84" widths).