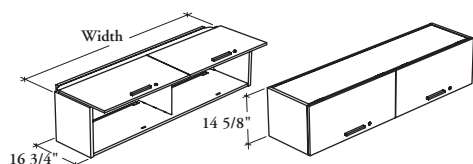


mounted storage & accessories

Xpress

ROCF

Overhead Cabinet – Solid Flipper Door(s)



Column-Mounted

Wall-Mounted

This cabinet is a mounted storage unit that provides above worksurface storage capabilities.

WHAT'S INCLUDED

1 overhead cabinet, column- or wall-mounting supports, pulls, lock and keys, and components as listed below:

	Widths	
	24" to 48"	54" to 84"
Door	1	2
Divider	n/a	1

WHAT'S EXCLUDED

Structural Columns and Book Organizers.

NOTES

This cabinet is shipped knocked down.

This cabinet has a 19 1/2" clearance between the top of the desk to the bottom of the cabinet.

Specify the width according to the width of the desk over which the overhead cabinet is mounted. Column-Mounted Overhead Cabinet width is actually 2.5" less.

Soft Touch (2) and Standard T/O/S (4) pulls are only available in limited Foundation colors. Refer to the specification software for details.

PRODUCT OPTIONS

Mounted Style	Depth	Width	Door Finish	Edge Trim Finish	Case Finish	Shelf and Divider Finish (Source Lam. Case only)	Pull Style	Pull Finish	Key Style	Motion Control Mechanism
C Column-Mounted	16	24, 30, 36, 42, 48, 54, 60, 66, 72, 78, 84	Source Laminate	Edge Trim Colors	Source Laminate	Foundation	1 Standard Expansion	Foundation	K Keyed Alike R Keyed Randomly N No Lock	2 With Motion Control Mechanism
W Wall-Mounted			Foundation Laminate Flintwood		Foundation Mica	Mica Coordinate Colors	2 Soft Touch 4 Standard T/O/S 6 Arched 7 Elliptical 9 Rectilinear	Accent Mica		

SAMPLE ORDER CODE

ROCF C	16	54	LY	JY	E	1	E	R	
---------------	-----------	-----------	-----------	-----------	----------	----------	----------	----------	--

DIMENSIONS INCHES / MM

D	W
16 / 406	24 / 610
16 / 406	30 / 762
16 / 406	36 / 914
16 / 406	42 / 1067
16 / 406	48 / 1219
16 / 406	54 / 1372
16 / 406	60 / 1524
16 / 406	66 / 1676
16 / 406	72 / 1829
16 / 406	78 / 1981
16 / 406	84 / 2134

PRICING

Source Laminate	Foundation Laminate	Flintwood
750	794	1195
794	824	1236
845	882	1324
893	957	1433
913	991	1490
938	1030	1543
965	1062	1592
1002	1106	1658
1033	1150	1724
1098	1208	1811
1132	1266	1900

If Mica Case is specified, add 107.

If Motion Control Mechanism is specified, add 180 (24" – 48" widths)

add 360 (54" – 84" widths)