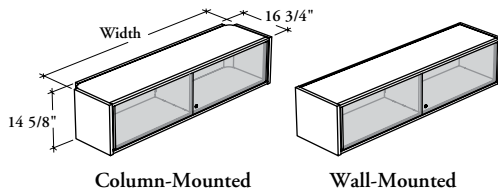


# mounted storage & accessories

**Xpress**

## ROCD

### Overhead Cabinet – Sliding Doors



This cabinet is a mounted storage unit that provides above worksurface storage capabilities.

#### WHAT'S INCLUDED

1 overhead cabinet, column- or wall-mounting supports, 2 sliding doors, 2 sliding door pulls, 1 divider (54" to 84" only), lock and keys.

#### WHAT'S EXCLUDED

Structural Columns.

#### NOTES

This cabinet is shipped knocked down.

This cabinet has a 21 1/2" clearance between the top of the desk to the bottom of the cabinet.

Specify the width according to the width of the desk over which the overhead cabinet is mounted. Column-Mounted Overhead Cabinet width is actually 2.5" less.

Frosted (FT) is a single-sided etched tempered glass which is facing inward of cabinet.

**Xpress** Not all configurations are available as Xpress, Please see Xpress catalogue and/or specification software for details.

#### PRODUCT OPTIONS

Mounted Style	Depth	Case Finish	Sliding Rail and Shelf Finish (Source Laminate Case only)	Door Style	Door Finish	Edge Trim Finish	Key Style
<b>C</b> Column-Mounted	16	Source Laminate	Foundation	<b>F</b> Flintwood	Flintwood	Edge Trim Colors (for Laminate Sliding Doors)	<b>K</b> Keyed Alike <b>R</b> Keyed Randomly <b>N</b> No Lock
<b>W</b> Wall-Mounted	<b>Width</b>	Foundation Mica	Mica Coordinate Colors	<b>G</b> Glass <b>L</b> Laminate	<b>Standard Glass:</b> CL Clear FT Frosted <b>Back-Painted Glass</b> Source Laminate		
	30, 36, 42, 48, 54, 60, 66, 72, 78, 84					Foundation Mica	

#### SAMPLE ORDER CODE

<b>ROCD C</b>	<b>16</b>	<b>48</b>	<b>3D</b>	<b>E</b>	<b>G</b>	<b>K8</b>		<b>E</b>	<b>N</b>
---------------	-----------	-----------	-----------	----------	----------	-----------	--	----------	----------

#### DIMENSIONS INCHES / MM

D	W
16 / 406	30 / 762
16 / 406	36 / 914
16 / 406	42 / 1067
16 / 406	48 / 1219
16 / 406	54 / 1372
16 / 406	60 / 1524
16 / 406	66 / 1676
16 / 406	72 / 1829
16 / 406	78 / 1981
16 / 406	84 / 2134

#### PRICING

LAMINATE DOORS (L)		GLASS DOORS (G)		FLINTWOOD DOORS (F)
	Source Laminate	Clear (CL)	Frosted (FT)/ Back-Painted	Flintwood
	1195	1211	1296	1551
	1379	1384	1502	1812
	1472	1480	1604	1969
	1574	1580	1706	2145
	1777	1778	1920	2415
	1882	1888	2031	2591
	1978	2001	2141	2769
	2050	2083	2255	2912
	2137	2196	2368	3074
	2228	2291	2480	3218

If Mica case is specified, add 138.