

Storage Unit with Glass Doors combines the filing capabilities of a Lateral File with the flexibility of a storage unit.

**WHAT'S INCLUDED**

1 storage unit with 2 lateral file drawers, pulls, levelers, lock and keys, and accessories as listed below:

	Widths			Shelf	Heights	
	24"	30"	36"		51"	66" or 72"
15" Cross File Bar	2	4	4	1	2	

**WHAT'S EXCLUDED**

Top for Solid Storage Cabinet and Hang-On Kit.

**NOTES**

Top on 51" height overlaps side and back panels for a cleaner look and to fit with Elevated Desktop Cabinets.

This Storage Unit with drawers accepts both letter- and legal-size paper.

Holes at 1 1/4" intervals on the inside walls of side panels allow for shelf adjustment.

Additional shelves (RSHE) are available and must be ordered separately.

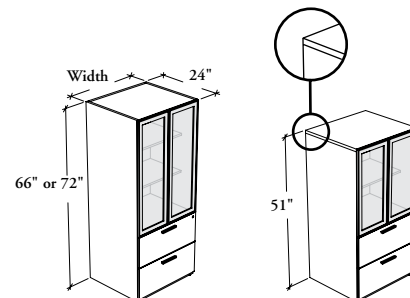
Cross file bars are included along the depth only.

Frosted (FT) is a single-sided etched tempered glass which is facing inward of storage.

Soft Touch (2) and Standard T/O/S (4) pulls are only available in limited Foundation colors. Refer to the specification software for details.

**Xpress** Not all glass door finishes are available as Xpress, Please see Xpress catalogue and/or specification software for details.

**RBUSG**  
**Storage Unit – Glass Doors**



**PRODUCT OPTIONS**

Depth	Drawer Front Finish	Door Frame Finish	Glass Door Finish	Pull Style	Pull Finish	Key Style	Glass Door Lock
24	Source Laminate	Foundation	Standard Glass: CL Clear	1 Standard Expansion	Foundation	K Keyed Alike	0 No
Width	Foundation Laminate	Accent	FT Frosted	2 Soft Touch	Accent	R Keyed Randomly	1 Yes
	Flintwood	Mica	Back-Painted Glass	4 Standard T/O/S	Mica		
24, 30, 36	<b>Edge Trim Finish</b>	AC Clear Anodized		6 Arched			
Height	Edge Trim Colors			7 Elliptical			
	<b>Case Finish</b>			9 Rectilinear			
51, 66, 72	Source Laminate						

**SAMPLE ORDER CODE**

<b>RBUSG</b>	<b>24</b>	<b>30</b>	<b>72</b>	<b>2E</b>	<b>4E</b>	<b>3E</b>	<b>AC</b>	<b>K7</b>	<b>1</b>	<b>E</b>	<b>R</b>	<b>0</b>
--------------	-----------	-----------	-----------	-----------	-----------	-----------	-----------	-----------	----------	----------	----------	----------

**DIMENSIONS**  
**INCHES / MM**

D	W	H
24 / 610	24 / 610	51 / 1295
24 / 610	24 / 610	66 / 1676
24 / 610	24 / 610	72 / 1829
24 / 610	30 / 762	51 / 1295
24 / 610	30 / 762	66 / 1676
24 / 610	30 / 762	72 / 1829
24 / 610	36 / 914	51 / 1295
24 / 610	36 / 914	66 / 1676
24 / 610	36 / 914	72 / 1829

**PRICING**

CLEAR GLASS DOOR (CL)		
Source Laminate	Foundation Laminate	Flintwood
2739	2840	4275
2958	3058	4495
3103	3217	4713
2886	3023	4554
3131	3268	4799
3285	3445	5041
2980	3173	4843
3348	3541	5214
3495	3724	5459

FROSTED GLASS DOOR (FT) / BACK-PAINTED GLASS DOOR		
Source Laminate	Foundation Laminate	Flintwood
2916	3017	4452
3170	3270	4707
3358	3472	4968
3063	3200	4731
3398	3535	5066
3605	3765	5361
3157	3350	5020
3668	3861	5534
3882	4111	5846

**GLASS DOOR LOCK (1)**

55
55
55
55
55
55
55
55
55
55