

These products provide side storage capacity while supporting the worksurface, for an integrated and refined look.

RBHSC

Supporting Tower with Full Door

WHAT'S INCLUDED

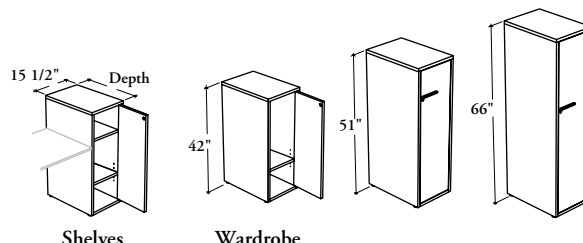
Shelves tower style: 1 tower, pulls, levelers, lock and keys, mounting hardware, and shelves as listed below:

	Heights		
	42"	51"	66"
Fixed Shelf	1	1	1
Adjustable Shelf	n/a	2	2

Wardrobe tower style: 1 tower, 1 coat rod, 1 adjustable shelf, pulls, levelers, mounting hardware, lock and keys.

NOTES

- Specify the depth according to the worksurface on which the tower is installed.
- When used with odd worksurface widths, total footprint will respect 6" increments.
- Holes at 1 1/4" intervals on the inside walls of side panels allow for shelf adjustment.
- Soft Touch (2) and Standard T/O/S (4) pulls are only available in limited Foundation colors. Refer to the specification software for details.



PRODUCT OPTIONS

Tower Style	Depth	Height	Configuration	Door and Back Panel Finish	Edge Trim Finish (Door only)	Case Finish	Pull Style	Pull Finish	Key Style
S Shelves	20, 24, 30	42, 51, 66	L Left	Source Laminate	Edge Trim Colors	Source Laminate	1 Standard Expansion	Foundation	K Keyed Alike
W Wardrobe			R Right (Shown)	Flintwood			2 Soft Touch 4 Standard T/O/S 6 Arched 7 Elliptical 9 Rectilinear	Accent Mica	R Keyed Randomly N No Lock

SAMPLE ORDER CODE

RBHSC W	24	51	R	2E	4E	2E	9	7	K
----------------	-----------	-----------	----------	-----------	-----------	-----------	----------	----------	----------

**DIMENSIONS
INCHES / MM**

D	H
20 / 508	42 / 1067
20 / 508	51 / 1295
20 / 508	66 / 1676
24 / 610	42 / 1067
24 / 610	51 / 1295
24 / 610	66 / 1676
30 / 762	42 / 1067
30 / 762	51 / 1295
30 / 762	66 / 1676

PRICING

SHELVES TOWER STYLE (S)	
Source Laminate	Flintwood
1038	1731
1252	2112
1478	2589
1158	1847
1370	2233
1601	2714
1324	2011
1535	2398
1825	2938

WARDROBE TOWER STYLE (W)	
Source Laminate	Flintwood
986	1679
1144	2004
1349	2463
1105	1796
1260	2124
1473	2586
1267	1960
1426	2286
1695	2807