

J Z B S O

EZ Suspended Credenza – Lateral File and Cubby – Shared

This suspended credenza must be installed on-module under a EZ Fence Beam to provide share filling and casual open storage to both sides of the fence.

WHAT'S INCLUDED

1 ez suspended credenza, 2 drawers, 2 bag holders, mounting hardware, lock and keys (as specified) and accessories as listed below:

	Widths		
	60"	66" to 84"	
Cable Management	1	2	
12" Hanging File Bar	1	n/a	per drawer
15" Hanging File Bar	n/a	1	per drawer

WHAT'S EXCLUDED

EZ Fence Beam, Chicago EZ Fence Beam and File Drawer Organizer.

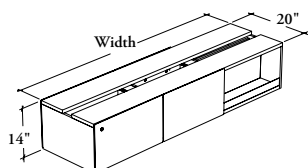
NOTES

When Front Style (M or N) is specified, only Metal Front Finish is available.

When Front Style (S or T) is specified, only Laminate Front Finish is available.

When Front Style (M or S) is specified, Pull Style and Pull and Bag Holder Finish are not available.

When Front Style (N or T) is specified, Bag Holder Finish are **not** available.



PRODUCT OPTIONS

Front Style	EZ Fence Leg Style	Case Height	Depth	Width	Orientation	Front Finish
M Metal N Metal with Pull S Solid T Solid with Pull	A Angled	14	20	60, 66, 72, 78, 84	L Drawer on Left (Shown) R Drawer on Right	Metal Front: Foundation Accent Mica Laminate Front: Source Laminate Foundation Laminate

SAMPLE ORDER CODE

JZBSO S	A	14	20	72	L	3D
----------------	----------	-----------	-----------	-----------	----------	-----------

PRODUCT OPTIONS CONTINUED

Edge Trim Finish (Laminate Front Only)	Case Finish	Pull Style (If Applicable)	Pull and Bag Holder Finish (If Applicable)	Bag Holder Finish (If Applicable)	Leg Mounting Hardware Finish	Key Style
Edge Trim Colors	Source Laminate	C Cityline Recessed	Foundation Mica Accent	Foundation Mica Accent	Foundation Mica Accent	K Keyed Alike R Keyed Randomly N No Lock

SAMPLE ORDER CODE CONTINUED

4D	3D			60	60	R
-----------	-----------	--	--	-----------	-----------	----------

See Pricing on the following page.

J Z B S O
EZ Suspended Credenza – Lateral
File and Cubby – Shared (Continued)

DIMENSIONS
INCHES / MM

PRICING

H	D	W	METAL FRONT (M) or METAL FRONT WITH PULL (N)	SOLID FRONT (S) or SOLID FRONT WITH PULL (T)	
				Source Laminate	Foundation Laminate
14 / 356	20 / 508	60 / 1524	2558	2558	2601
14 / 356	20 / 508	66 / 1676	2605	2605	2659
14 / 356	20 / 508	72 / 1829	2653	2653	2717
14 / 356	20 / 508	78 / 1981	2702	2702	2777
14 / 356	20 / 508	84 / 2134	2749	2749	2835