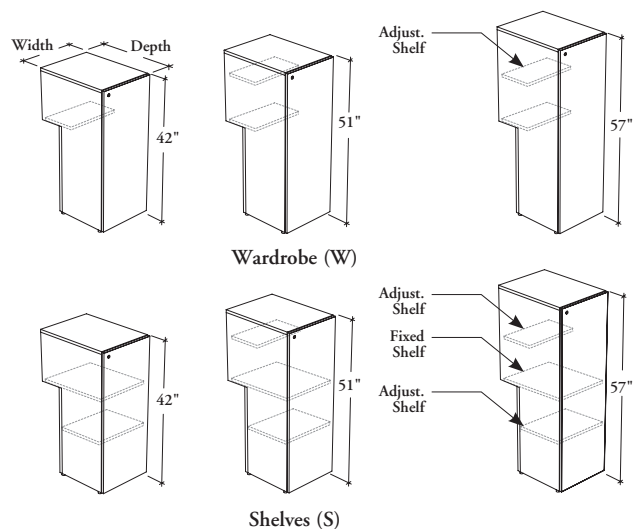


# freestanding storage

## JNFBS

### Beam Tower with Full Solid Door



These beam towers provide storage area to store garments and other items, while supporting the front of a worksurface and let a beam pass-through.

#### WHAT'S INCLUDED

1 beam tower, levelers, 1 cable pass-through ring (as specified), 1 (12" w) or 2 (18" w) coat hooks (wardrobe only), locks and keys (if specified), beam mounting hardware, and accessories as listed below:

	Interior Configuration						Position	
	S			W			E	I
Heights	42"	51"	57"	42"	51"	57"		
Adjust. Shelf	1	2	2	n/a	1	1	Hang-On	
Fixed Shelf	1	1	1	n/a	n/a	n/a	Kit	1 2

#### WHAT'S EXCLUDED

Cable Pass-Through Cover (if applicable).

#### NOTES

Holes at 1 1/4" intervals on the inside walls of side panels allow for shelf adjustment.

With Cable Pass-Through option is **not** applicable with In-Line position (I).

Cable Pass-Through Ring comes in a Platinum Coordinate.

When End of Station (E) position is specified, only the (N) or (S) Cable Pass-Through option is available.

#### PRODUCT OPTIONS

Front Style	Interior Configuration	Depth	Width	Height	Position
<b>S</b> Solid	<b>S</b> Shelves <b>W</b> Wardrobe	24, 30	12, 18	42, 51, 57	<b>E</b> End of Station <b>I</b> In-Line

#### SAMPLE ORDER CODE

<b>JNFBS S</b>	<b>W</b>	<b>24</b>	<b>12</b>	<b>42</b>	<b>E</b>
----------------	----------	-----------	-----------	-----------	----------

#### PRODUCT OPTIONS CONTINUED

Orientation	Door Front Finish	Edge Trim Finish (Laminate Front Only)	Case Finish	Cable Pass-Through	Key Style
<b>L</b> Door Swing – Left	Source Laminate	Edge Trim Colors	Source Laminate	<b>N</b> No Pass-Through (Shown)	<b>K</b> Keyed Alike
<b>R</b> Door Swing – Right (Shown)	Foundation Laminate			<b>S</b> Standard-Height Pass-Through	<b>R</b> Keyed Randomly
				<b>X</b> Not Applicable	<b>N</b> No Lock

#### SAMPLE ORDER CODE

<b>L</b>	<b>XG</b>	<b>SS</b>	<b>XG</b>	<b>N</b>	<b>K</b>
----------	-----------	-----------	-----------	----------	----------

See Pricing on the following page.

**J N F B S**  
**Beam Tower with Full Solid Door**  
**(Continued)**

**DIMENSIONS**  
**INCHES / MM**

D	W	H
24 / 610	12 / 305	42 / 1067
24 / 610	12 / 305	51 / 1295
24 / 610	12 / 305	57 / 1448
24 / 610	18 / 457	42 / 1067
24 / 610	18 / 457	51 / 1295
24 / 610	18 / 457	57 / 1448
30 / 762	12 / 305	42 / 1067
30 / 762	12 / 305	51 / 1295
30 / 762	12 / 305	57 / 1448
30 / 762	18 / 457	42 / 1067
30 / 762	18 / 457	51 / 1295
30 / 762	18 / 457	57 / 1448

**PRICING**

WARDROBE (W)		SHELVES (S)	
Source Laminate	Foundation Laminate	Source Laminate	Foundation Laminate
792	839	895	940
865	921	959	1015
956	1018	1050	1112
909	978	1011	1080
981	1066	1075	1159
1072	1166	1166	1260
828	874	929	975
900	956	994	1050
1008	1070	1058	1120
944	1013	1047	1115
1017	1100	1111	1194
1125	1219	1175	1269