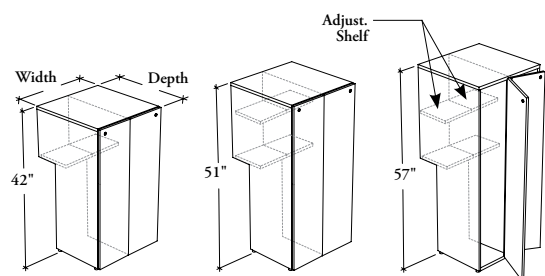


# freestanding storage

## J N F B D S

### Dual Beam Tower with Full Solid Doors



This beam tower provides storage area to store garments and other items for two users, while supporting the front of a worksurface and let a beam pass-through.

#### WHAT'S INCLUDED

1 beam tower, levelers, 2 hang-on kits (if in-line (I)), 1 coat hook on both sides, locks and keys (if specified), beam mounting hardware, and accessories as listed below:

	Heights			
	42"	51"	57"	
Adjustable Shelf	n/a	1	1	(on both sides)

#### NOTES

Both doors swing from the center divider to provide specific opening for each user.

Holes at 1 1/4" intervals on the inside walls of side panels allow for shelf adjustment.

#### PRODUCT OPTIONS

Front Style	Interior Configuration	Depth	Width	Height	Position	Door Front Finish	Edge Trim Finish (Laminate Front Only)	Case Finish	Cable Pass-Through	Key Style
<b>S</b> Solid	<b>W</b> Wardrobe	24, 30	18, 24	42, 51, 57	<b>I</b> In-Line	Source Laminate Foundation Laminate	Edge Trim Colors	Source Laminate	<b>X</b> Not Applicable	<b>K</b> Keyed Alike <b>R</b> Keyed Randomly <b>N</b> No Lock

#### SAMPLE ORDER CODE

JNFBDS	W	24	18	42	I	3D	4D	3D	X	N
S										

#### DIMENSIONS INCHES / MM

D	W	H
24 / 610	18 / 457	42 / 1067
24 / 610	18 / 457	51 / 1295
24 / 610	18 / 457	57 / 1448
24 / 610	24 / 610	42 / 1067
24 / 610	24 / 610	51 / 1295
24 / 610	24 / 610	57 / 1448
30 / 762	18 / 457	42 / 1067
30 / 762	18 / 457	51 / 1295
30 / 762	18 / 457	57 / 1448
30 / 762	24 / 610	42 / 1067
30 / 762	24 / 610	51 / 1295
30 / 762	24 / 610	57 / 1448

#### PRICING

	Source Laminate	Foundation Laminate
	1240	1329
	1387	1498
	1516	1637
	1406	1524
	1561	1708
	1691	1854
	1367	1459
	1516	1626
	1647	1770
	1534	1656
	1691	1837
	1820	1984

