

This beam tower provides storage area to store garments and other items for two users, while supporting the front of a worksurface and let a beam pass-through.

WHAT'S INCLUDED

1 beam tower, levelers, 2 hang-on kits (if in-line (I)), 1 coat hook on both sides, locks and keys (if specified), beam mounting hardware, and accessories as listed below:

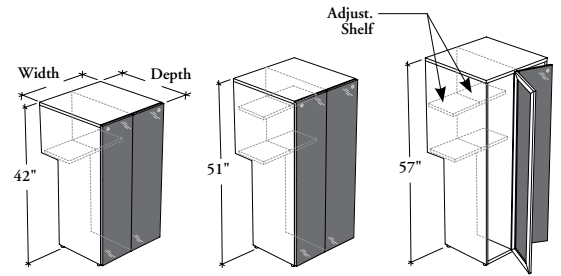
	Height		
	42"	51"	57"
Adjustable Shelf	n/a	1	1 (on both sides)

NOTES

Both doors swing from the center divider to provide specific opening for each user.

Holes at 1 1/4" intervals on the inside walls of side panels allow for shelf adjustment.

J N F B D G
Dual Beam Tower with Full Glass Doors



PRODUCT OPTIONS

Interior Configuration	Depth	Width	Height	Position	Door Frame Finish	Glass Door Finish	Case Finish	Cable Pass-Through	Key Style
W Wardrobe	24, 30	18, 24	42, 51, 57	I In-Line	Foundation Mica Accent	Back-Painted	Source Laminate	X Not Applicable	K Keyed Alike R Keyed Randomly N No Lock

SAMPLE ORDER CODE

JNFB DG W	24	18	42	I	53	K1	XG	X	K
---------------------	-----------	-----------	-----------	----------	-----------	-----------	-----------	----------	----------

DIMENSIONS
INCHES / MM

D	W	H
24 / 610	18 / 457	42 / 1067
24 / 610	18 / 457	51 / 1295
24 / 610	18 / 457	57 / 1448
24 / 610	24 / 610	42 / 1067
24 / 610	24 / 610	51 / 1295
24 / 610	24 / 610	57 / 1448
30 / 762	18 / 457	42 / 1067
30 / 762	18 / 457	51 / 1295
30 / 762	18 / 457	57 / 1448
30 / 762	24 / 610	42 / 1067
30 / 762	24 / 610	51 / 1295
30 / 762	24 / 610	57 / 1448

PRICING

Back-Painted
1261
1406
1517
1419
1568
1679
1382
1527
1637
1515
1665
1775

KEY UPCHARGE

Key Alike or Keyed Randomly
93
93
93
93
93
93
93
93
93
93
93
93
93