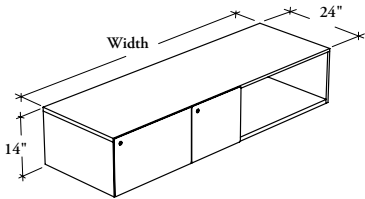


beam-mounted storage



JNBSC

Suspended Credenza – Open with Combo File



This storage must be installed on-module, between two structural legs and on front of a structural beam, to provide filing, personal and open storage.

WHAT'S INCLUDED

1 credenza, 1 large and 1 small drawers, lock and keys (as specified), mounting hardware and accessories listed below:

	Width				Depth
	54" to 72"		78" or 84"		
	18"	24"	18"	24"	
	12" Hang. File Bar	1	1	2	
15" Hang. File Bar	n/a	1	n/a	2	

WHAT'S EXCLUDED

Structural Beam, Chicago Structural Beam, EZ Fence Beam, Chicago EZ Fence Beam, EZ Fence Beam for Corridor, Chicago EZ Fence Beam for Corridor, EZ Structural Legs, Structural Legs and File Drawer Organizers.

NOTES

- Small drawer of 18" deep configuration can only store letter size files.
- Beam Configuration must match the beam on which the storage will be mounted.
- This storage unit is equipped with an interlock system that prevents opening more than one drawer at a time.
- The Support Mounting Hardware Finish can be specified to match the case or the leg to which the storage is mounted to. See the application guide section for details.
- When Front Style (M or N) is specified, only Metal Drawer Front Finish is available.
- When Front Style (S or T) is specified, only Laminate Drawer Front Finish is available.
- When Front Style (M or S) is specified, Pull Style and Pull Finish are **not** available.

PRODUCT OPTIONS

Front Style	Structural Leg Style	Case Height	Depth	Width	Width Reduction	Beam Configuration
M Metal (Shown)	A Angled	14 14" (Datum Height 24")	18, 24	54, 60, 66, 72, 78, 84	FF Full Legs	D Double-Sided
N Metal with Pull					FH Full/Shared Legs	S Single-Sided
S Solid					HH Shared Legs_ None/Full Leg	
T Solid with Pull					NH None/Shared Leg	
					NN None Leg	

SAMPLE ORDER CODE

JNBSC S	A	14	18	72	HH	D
---------	---	----	----	----	----	---

PRODUCT OPTIONS CONTINUED

Orientation	Front Finish	Edge Trim Finish (for Laminate Front only)	Case Finish	Pull Style (for Front Style (N or T) only)	Pull Finish (for Front Style (N or T) only)	Key Style	Support Mounting Hardware Finish
L Drawers on Left (Shown)	Metal Front: (for metal front style) Foundation Mica Accent Laminate Front: (for solid front style) Source Laminate Foundation Laminate	Edge Trim Colors	Source Laminate	C Cityline Recessed	Foundation Mica Accent	K Keyed Alike	Foundation
R Drawers on Right						R Keyed Randomly N No Lock	Mica Accent Coordinate Colors

SAMPLE ORDER CODE

L	3D	4D	3D			R	60
---	----	----	----	--	--	---	----

See Pricing on the following page.

Suspended Credenza – Open with Combo File (Continued)

PRICING

METAL FRONT (M) or METAL FRONT WITH PULL (N)	SOLID FRONT (S) or SOLID FRONT WITH PULL (T)
	Source Laminate Foundation Laminate
1328	1328 1361
1524	1524 1569
1721	1721 1778
1916	1916 1983
2114	2114 2192
2310	2310 2400
1448	1448 1483
1645	1645 1689
1841	1841 1897
2039	2039 2104
2235	2235 2313
2431	2431 2521