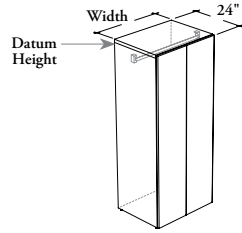


lockers

JLFS D

Common Locker – Full Doors



This Common Locker with Full Doors provides storage for coats to multiple users. This freestanding unit can be ganged with other lockers to create a bank of lockers.

WHAT'S INCLUDED

1 case with levelers, 2 doors and accessories listed below:

Interior Config.	Coat Rod	Adjust. Shelf
C	1	0 (51" to 66" h)
D	1	1 (66" h only)

WHAT'S EXCLUDED

Boot Tray and Common Locker Symbol.

NOTES

When Front Style (M or N) is specified, only Metal Door Front Finish is available.

When Front Style (S or T) is specified, only Laminate Door Front Finish is available.

When Front Style (M or S) is specified, Pull Style and Pull Finish are **not** available.

Coat Rod comes in Chrome finish only.

Shelf matches the Case Finish.

Refer to application guide.

PRODUCT OPTIONS

Front Style	Datum Height	Depth	Width	Identification
M Metal	51, 57, 66	24	24, 30, 36	N No Identification (Shown)
N Metal with Pull				S Symbol Ready
S Solid (Shown)				
T Solid with Pull				

SAMPLE ORDER CODE

JLFS D S	51	24	24	N
-----------------	-----------	-----------	-----------	----------

PRODUCT OPTIONS CONTINUED

Interior Configuration	Door Front Finish	Edge Trim Finish (Laminate Front only)	Case Finish	Pull Style (for Front Style (N or T) only)	Pull Finish (for Front Style (N or T) only)
C Coat Rod (Shown)	Metal Front: (for metal front style) Foundation Mica Accent Laminate Front: (for solid front style) Source Laminate Foundation Laminate	Edge Trim Colors	Source Laminate	C Cityline Recessed	Foundation Mica Accent
D Coat Rod & Shelf					

SAMPLE ORDER CODE CONTINUED

C	3D	4D	3D		
----------	-----------	-----------	-----------	--	--

See Pricing on the following page.

J L F S D
Common Locker – Full Doors
(Continued)

DIMENSIONS
INCHES / MM

H	D	W
51 / 1295	24 / 610	24 / 610
51 / 1295	24 / 610	30 / 762
51 / 1295	24 / 610	36 / 914
57 / 1448	24 / 610	24 / 610
57 / 1448	24 / 610	30 / 762
57 / 1448	24 / 610	36 / 914
66 / 1676	24 / 610	24 / 610
66 / 1676	24 / 610	30 / 762
66 / 1676	24 / 610	36 / 914

51 / 1295	24 / 610	24 / 610
51 / 1295	24 / 610	30 / 762
51 / 1295	24 / 610	36 / 914
57 / 1448	24 / 610	24 / 610
57 / 1448	24 / 610	30 / 762
57 / 1448	24 / 610	36 / 914
66 / 1676	24 / 610	24 / 610
66 / 1676	24 / 610	30 / 762
66 / 1676	24 / 610	36 / 914

PRICING

METAL (M)	
Coat Rod (C)	Coat Rod & Shelf (D)
1602	n/a
1667	n/a
1729	n/a
1706	n/a
1774	n/a
1839	n/a
1869	1921
1941	2003
2020	2092

METAL WITH PULL (N)	
Coat Rod (C)	Coat Rod & Shelf (D)
1734	n/a
1799	n/a
1861	n/a
1838	n/a
1906	n/a
1971	n/a
2001	2053
2073	2135
2152	2224

SOLID (S)			
COAT ROD (C)		COAT ROD & SHELF (D)	
Source Laminate	Foundation Laminate	Source Laminate	Foundation Laminate
1362	1516	n/a	n/a
1427	1619	n/a	n/a
1489	1719	n/a	n/a
1432	1604	n/a	n/a
1500	1714	n/a	n/a
1565	1823	n/a	n/a
1537	1735	1589	1787
1609	1857	1671	1919
1688	1986	1760	2058

SOLID WITH PULL (U)			
COAT ROD (C)		COAT ROD & SHELF (D)	
Source Laminate	Foundation Laminate	Source Laminate	Foundation Laminate
1478	1632	n/a	n/a
1543	1735	n/a	n/a
1605	1835	n/a	n/a
1548	1720	n/a	n/a
1616	1830	n/a	n/a
1681	1939	n/a	n/a
1653	1851	1705	1903
1725	1973	1787	2035
1804	2102	1876	2174