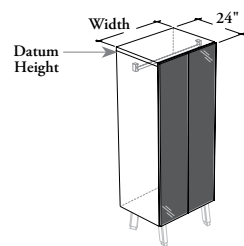


lockers

JLES G

Elevated Common Locker – Full Glass Doors



This Elevated Common Locker with Full Glass Doors provides storage for coat to multiple users. This freestanding unit can be ganged with other lockers to create a bank of lockers. It must be used with Angled Foot Kit (JLEFK), specified separately.

WHAT'S INCLUDED

1 case, 2 doors and accessories listed below:

Interior Config.	Coat Rod
C	1

WHAT'S EXCLUDED

Angled Foot Kit for Elevated Locker and Boot Tray.

NOTES

Coat Rod comes in Chrome finish only.

Refer to application guide.

PRODUCT OPTIONS

Datum Height	Depth	Width	Interior Configuration	Door Frame Finish	Glass Door Finish	Case Finish
57, 66	24	24, 30, 36	C Coat Rod (Shown)	Foundation Mica Accent	Back-Painted	Source Laminate

SAMPLE ORDER CODE

JLES G 57	24	24	C	83	K7	3D
-----------	----	----	---	----	----	----

DIMENSIONS INCHES / MM

H	D	W
57 / 1448	24 / 610	24 / 610
57 / 1448	24 / 610	30 / 762
57 / 1448	24 / 610	36 / 914
66 / 1676	24 / 610	24 / 610
66 / 1676	24 / 610	30 / 762
66 / 1676	24 / 610	36 / 914

PRICING

COAT ROD (C)
2231
2295
2346
2350
2418
2483

