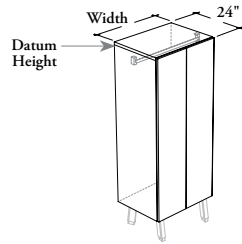


# lockers

## JLESD

### Elevated Common Locker – Full Doors



This Elevated Common Locker with Full Doors provides storage for coat to multiple users. This freestanding unit can be ganged with other lockers to create a bank of lockers. It must be used with Angled Foot Kit (JLEFK), specified separately.

#### WHAT'S INCLUDED

1 case, 2 doors and accessories listed below:

Interior Config.	Coat Rod
C	1

#### WHAT'S EXCLUDED

Angled Foot Kit for Elevated Locker, Boot Tray and Common Locker Symbol.

#### NOTES

When Front Style (M or N) is specified, only Metal Door Front Finish is available.

When Front Style (S or T) is specified, only Laminate Door Front Finish is available.

When Front Style (M or S) is specified, Pull Style and Pull Finish are **not** available.

Coat Rod comes in Chrome finish only.

Refer to application guide.

#### PRODUCT OPTIONS

Front Style	Datum Height	Depth	Width	Identification
M Metal	57, 66	24	24, 30, 36	N No Identification (Shown)
N Metal with Pull				S Symbol Ready
S Solid (Shown)				
T Solid with Pull				

#### SAMPLE ORDER CODE

<b>JLESD S</b>	<b>57</b>	<b>24</b>	<b>24</b>	<b>N</b>
----------------	-----------	-----------	-----------	----------

#### PRODUCT OPTIONS CONTINUED

Interior Configuration	Door Front Finish	Edge Trim Finish (Laminate Front only)	Case Finish	Pull Style (for Front Style (N or T) only)	Pull Finish (for Front Style (N or T) only)
C Coat Rod (Shown)	<b>Metal Front:</b> (for metal front style) Foundation Mica Accent  <b>Laminate Front:</b> (for solid front style) Source Laminate Foundation Laminate	Edge Trim Colors	Source Laminate	C Cityline Recessed	Foundation Mica Accent

#### SAMPLE ORDER CODE CONTINUED

<b>C</b>	<b>3D</b>	<b>4D</b>	<b>3D</b>		
----------	-----------	-----------	-----------	--	--

See Pricing on the following page.

**J L E S D**  
**Elevated Common Locker – Full  
 Doors (Continued)**

**DIMENSIONS**  
**INCHES / MM**

H	D	W
57 / 1448	24 / 610	24 / 610
57 / 1448	24 / 610	30 / 762
57 / 1448	24 / 610	36 / 914
66 / 1676	24 / 610	24 / 610
66 / 1676	24 / 610	30 / 762
66 / 1676	24 / 610	36 / 914

57 / 1448	24 / 610	24 / 610
57 / 1448	24 / 610	30 / 762
57 / 1448	24 / 610	36 / 914
66 / 1676	24 / 610	24 / 610
66 / 1676	24 / 610	30 / 762
66 / 1676	24 / 610	36 / 914

**PRICING**

**METAL (M)**

Coat Rod (C)
1457
1521
1572
1620
1688
1753

**METAL WITH PULL (N)**

Coat Rod (C)
1589
1653
1704
1752
1820
1885

**SOLID (S)**

COAT ROD (C)	
Source Laminate	Foundation Laminate
1325	1467
1389	1567
1440	1652
1430	1598
1498	1708
1563	1815

**SOLID WITH PULL (U)**

COAT ROD (C)	
Source Laminate	Foundation Laminate
1441	1583
1505	1683
1556	1768
1546	1714
1614	1824
1679	1931