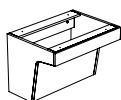
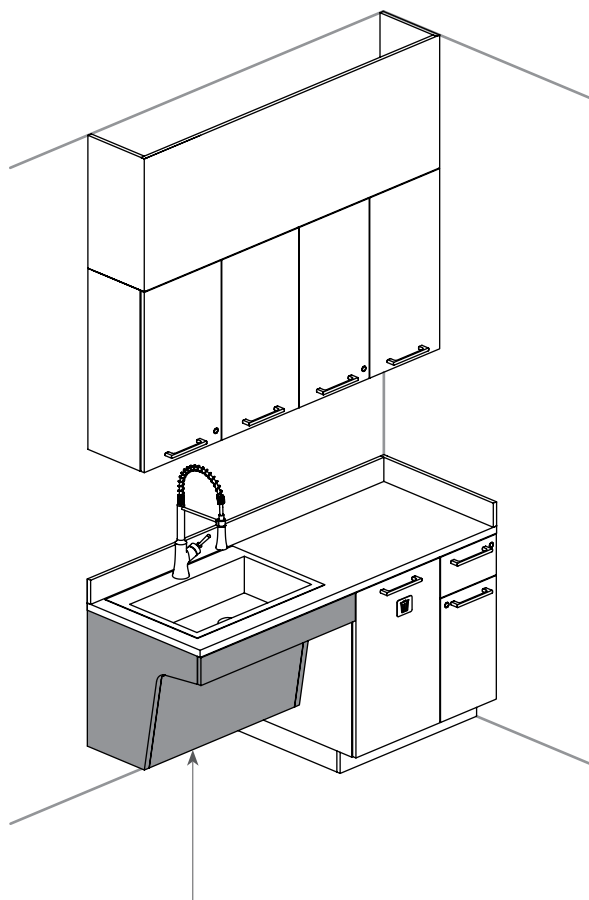


# wall-mounted base cabinets

UNDERSTANDING WALL-MOUNTED BASE CABINET . . . . .	56
WALL-MOUNTED BASE CABINET COMPONENTS . . . . .	58
WALL-MOUNTED BASE CABINET BASICS . . . . .	59
PLANNING WITH WALL-MOUNTED BASE CABINET	
INTEGRATION END PANEL & SECTION WIDTH SPECIFICATIONS . . . . .	60
WALL-MOUNTED RAIL FOR WALL-MOUNTED BASE CABINET DETAILS . . . . .	60
INTERIOR CLEARANCE . . . . .	61
WALL-MOUNTED BASE CABINET APPLICATIONS . . . . .	61

## understanding wall-mounted base cabinet

Wall-Mounted Base Cabinet is available in one style only. It can be used alone, with Base Cabinets or placed under Upper Cabinets for a maximum configuration possibilities.



Sink – People Reduced  
Mobility – Open  
(CEMKRO)



- Designed for sink application
- Not lockable
- Do not feature adjustable shelf or adjustment holes
- Requires ADA-compliant sink (6" and drain located to the back)
- Sink Cut-Out must be done by the installer



This symbol is used for products designed for people with reduced mobility.

For Finishes; see page 59

For Cabinets Product Offering; see page 138

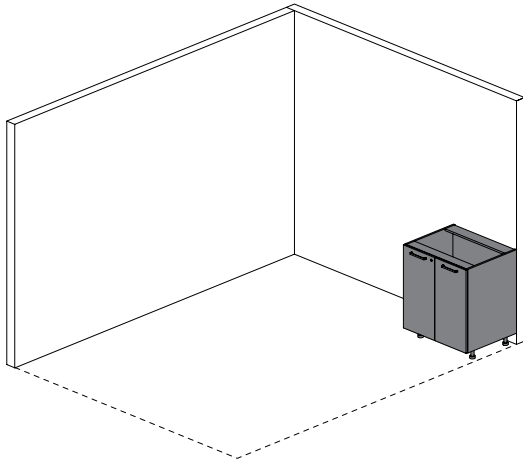
For Grain Direction; see page 144

# understanding wall-mounted base cabinet (continued)

Following steps should be followed when planning with Wall-Mounted Base Cabinet.

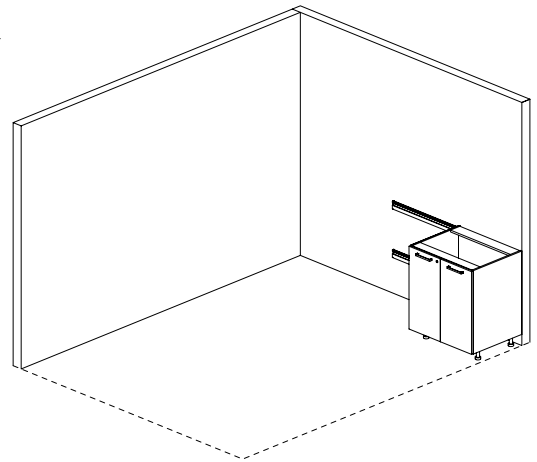
## how to plan

- Exact wall dimensions should be confirmed before choosing the cabinet widths
- It is the responsibility of the installer to securely attach the cabinet to the wall



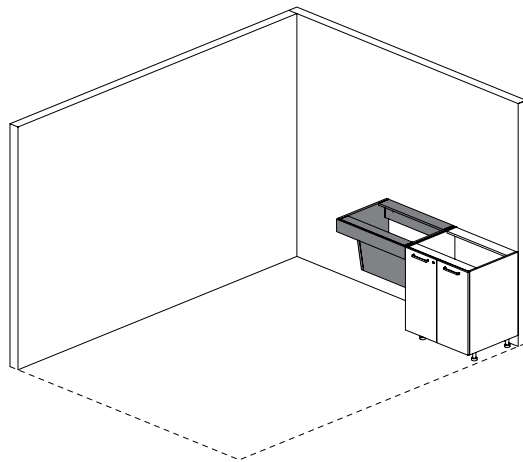
### step 1

Place the first cabinet in the opposite corner



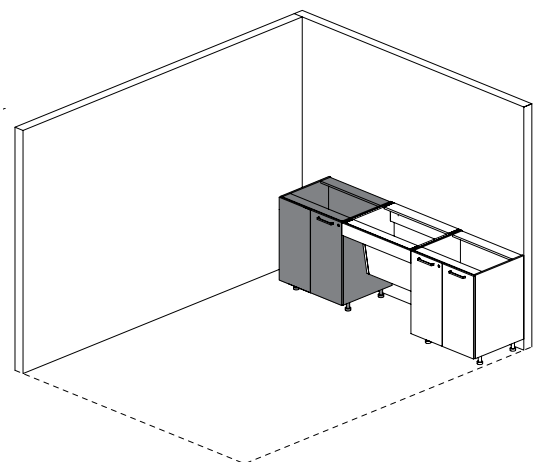
### step 2

Install Wall-Mounted Rails for Wall-Mounted Base Cabinet



### step 3

Arrange remaining Wall-Mounted Base Cabinet along the wall



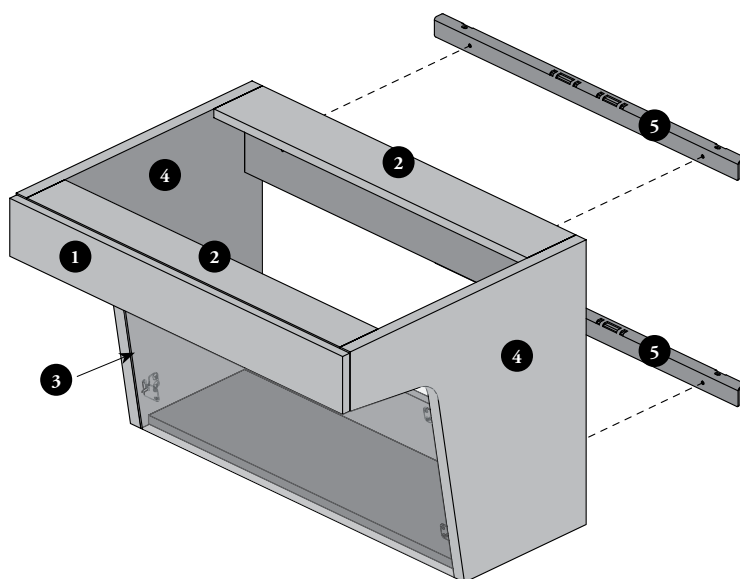
### step 4

Continue the row with Base Cabinets

## wall-mounted base cabinet components

applicable with wall-mounted base cabinet for sink – people with reduced mobility only

- ❶ **ADA Compliant Clearance**
  - Allows a full front or lateral approach
  - To ensure maximum clearance, the Fixed False Front of the CEMKRO, **does not** align with any other cabinet front
- ❷ **Top construction:** Semi open construction, must be covered with a Countertop
- ❸ **Removable Panel** to access plumbing
- ❹ **Integrated End Panels** allow for a finished look on the Wall-Mounted Base Cabinet itself
- ❺ **Wall-Mounted Hooks** allow wall-mounted cabinet to be mount on Wall-Mounted Rail for Wall- Mounted Base Cabinet (CEMR) – **not** included



# wall-mounted base cabinet basics

**Wall-Mounted Base Cabinet is available only in one format. Must be used under a Countertop.**

- ❗ Overall dimensions are the actual dimensions of the finished product: depth includes Wall-Mounted Rail for Wall-Mounted Base Cabinet (CEMR) and front
- Available at 32" high for people with reduced mobility
- Must be covered by a Countertop
- Must be used with Wall-Mounted Rail for Wall-Mounted Base Cabinet

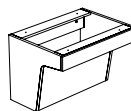


## Finishes

- **Case:** Source Laminate
- **Front:** Source Laminate, Foundation Laminate, Grade 2 Laminate, Flintwood (No Cathedral)
- **Edge Trim:** Edge Trim Colors and Not Applicable\*
- \* **Not Applicable (NA) option** is only available when Flintwood Front Finishes are specified

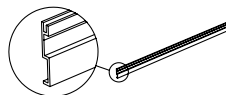
## Wall-Mounted Base Cabinet for Sink – People with Reduced Mobility – Open (CEMKRO)

- For people with reduced mobility, this cabinet allows a full front or a lateral approach
- Depth: 24"
- Widths: 33", 36" and 42"
- Height: 32"
- Only Integrated End Panel – Both Sides (B) option is available



## Wall-Mounted Rail for Wall-Mounted Base Cabinet (CEMR)

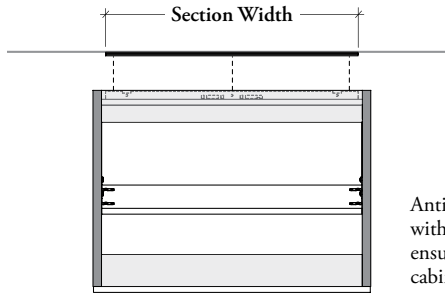
- The wall support is an aluminum extrusion used to mount Wall-Mounted Base Cabinet on the wall
- Section Widths: 33", 36" or 42"
- Section Height: 32"



## planning with wall-mounted base cabinet

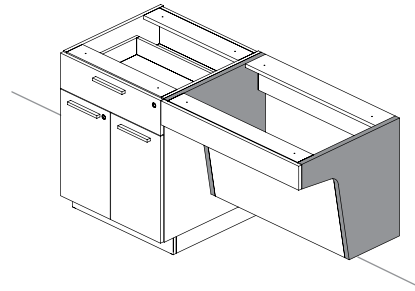
### integrated end panel & section width specifications

- Comes with an Integrated End Panel – Both Sides (B) option only
- The width of the Wall-Mounted Base Cabinet Rail must match the Wall-Mounted Base Cabinet width
- The rails (CEMR) are **not** included and must order for each Wall-Mounted Base Cabinet



TOP VIEW

Anti-dislodgement hardware is supplied with each Wall-Mounted Base Cabinet, ensuring a sturdy connection between the cabinet and the Wall-Mounted Rail



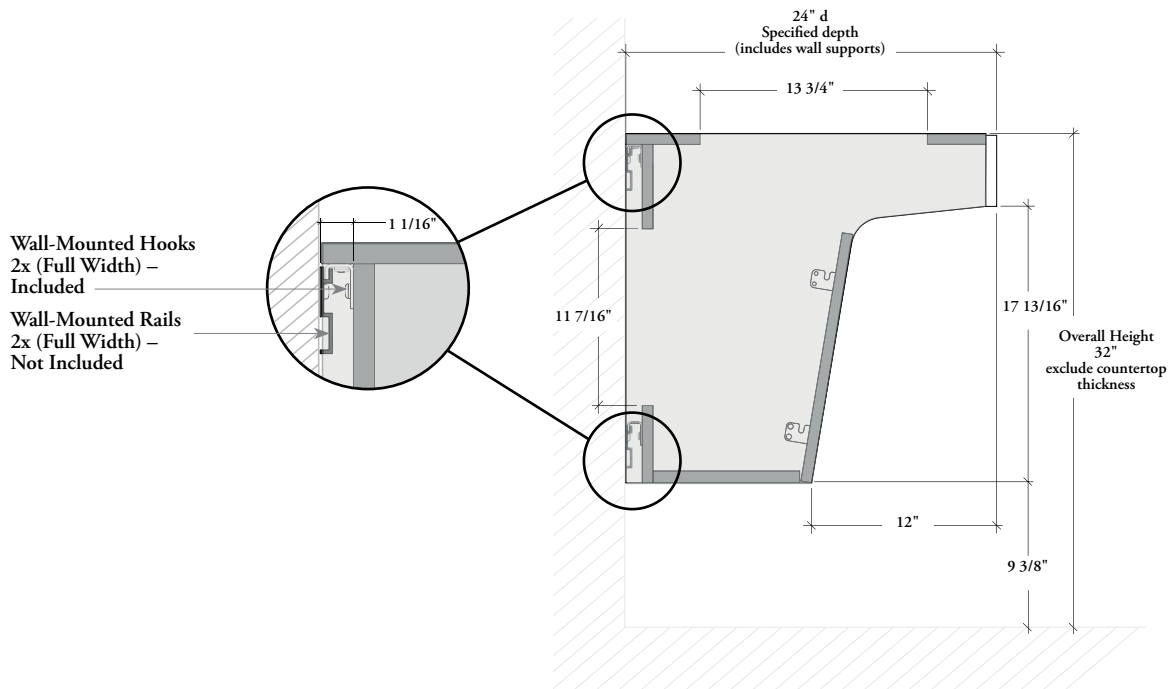
End Panel – Both Sides

### wall-mounted rail for wall-mounted base cabinet details

- The Section Width is nominal and is designed to fit the nominal width of the Wall-Mounted Base Cabinet
- Appropriate attachment methods and hardware for a secure and safe installation must be determined by the installer and meet the applicable local building code and laws
- Installer must provide wall mounting fasteners

#### 32" high cabinet

Installation on two wall-mounted rails

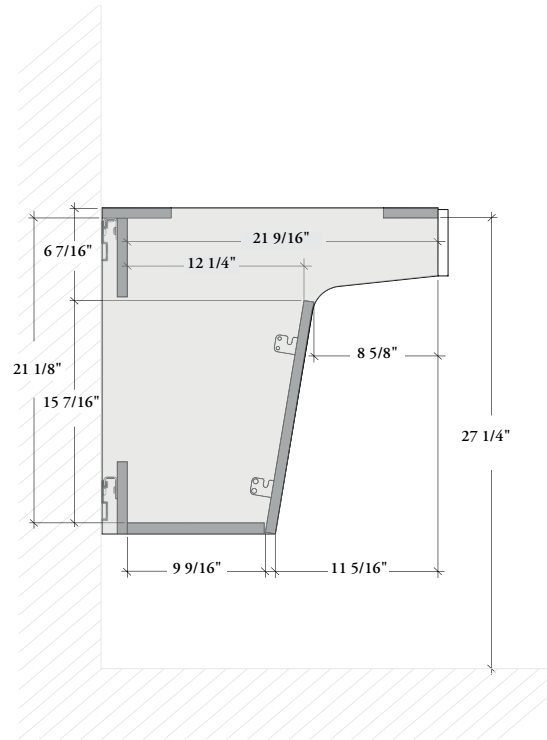


# planning with wall-mounted base cabinet (continued)

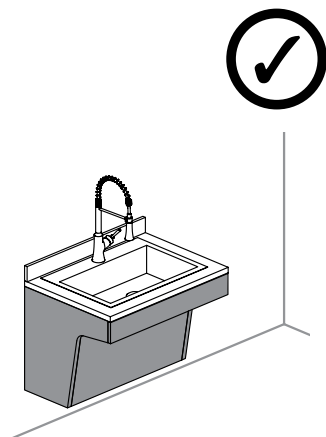
## interior clearance depth

Sink Cut-Out must be done by the installer

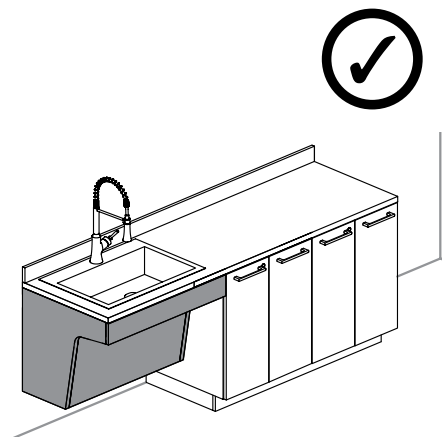
24" deep cabinet



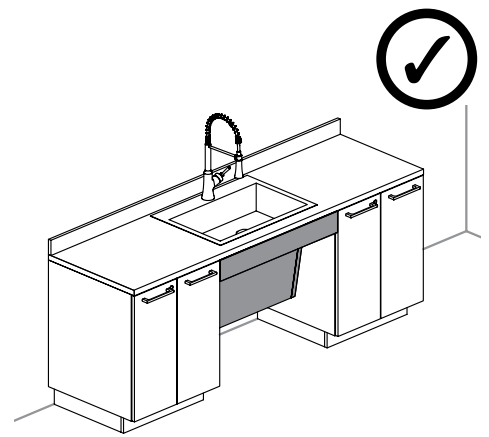
## wall-mounted base cabinet applications



Can be used alone



Can be placed at the end of the Base Cabinets



Can be placed between Base Cabinets